

CARTA DE APROXIMAÇÃO
POR INSTRUMENTOS (IAC)

SALVADOR / Deputado Luís Eduardo Magalhães, INTL (SBSV)

INSTRUMENT APPROACH CHART (IAC)

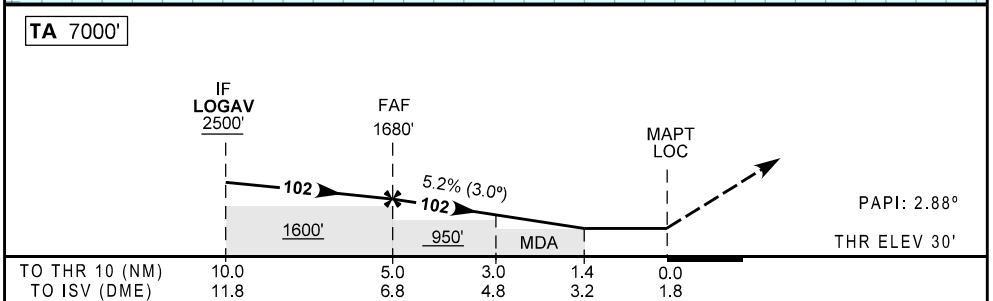
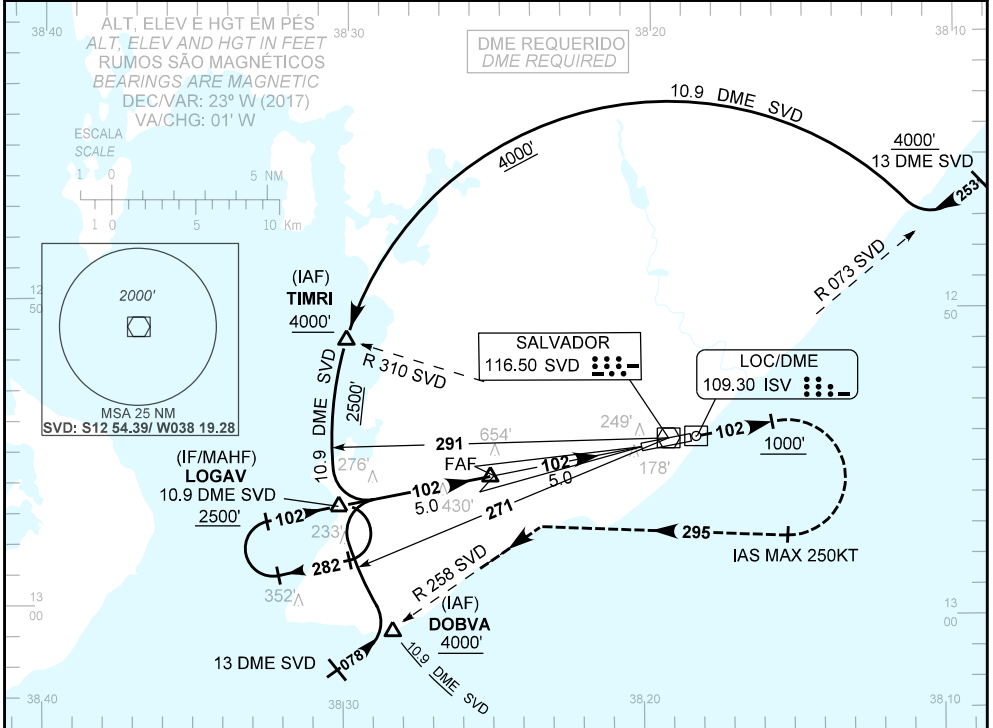
LOC Z RWY 10

AD ELEV: 66'	ATIS 127.75	APP SALVADOR 119.35 119.80 120.80 129.45	TWR SALVADOR 118.30 118.60 118.95 121.10 121.50	GNDZ SALVADOR 121.90
--------------	----------------	---	---	-------------------------

RMK: D-ATIS AVBL via DATA LINK.

Aproximação Perdida: Subir para 4000'. Manter RDL 102 SVD até cruzar 1000'. Então, curvar à direita proa 295 para interceptar a RDL 258 SVD até DOBVA e ingressar no arco DME 10.9 SVD para espera em LOGAV.

Missed Approach: Climb to 4000'. Maintain 102 SVD RDL until passing 1000'. Then, turn right heading 295 to intercept 258 SVD RDL up to DOBVA to join 10.9 DME SVD arc for holding at LOGAV.



SV372	4.0	3.0	2.0	1.4	RWY10	KT	090	110	130	150	170	190
1680	1354	1035	717	520	ALT	FPM	500	600	700	800	900	NA
1650	1324	1005	687	490	(HGT)	FAF-MAPT	NA					

POUSO DIRETO STRAIGHT-IN	CAT	A	B	C	D	E
	MDA / OCH / TETO	520 / 490 / 500				
LOC	ALS/NO ALS/RVR ALS (m)	NIL / 1600 / NIL		NIL / 2300 / NIL		
CIRCULAR TO CIRCLE	MDA / OCH / TETO	NA				
	VIS (m)					

MODIFICAÇÕES / CHANGES: CARTA NOVAINEW CHART.