

INSTRUMENT APPROACH
CHART (IAC)

RIO DE JANEIRO / Santos Dumont (SBRJ)

AD ELEV: 11'

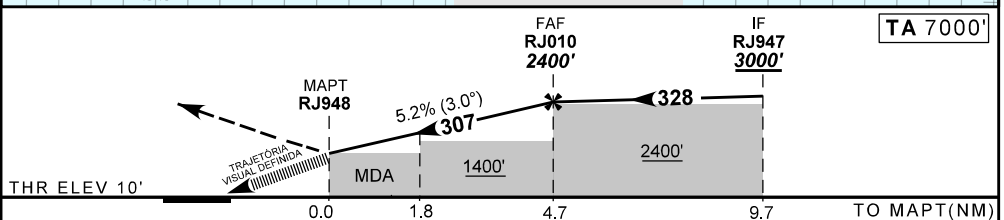
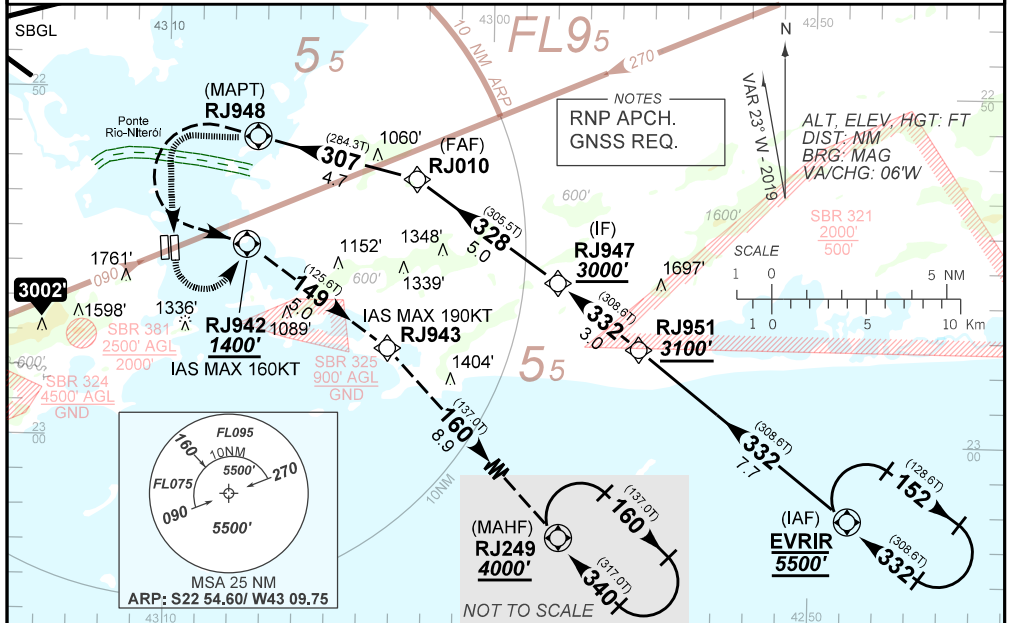
RNAV(GNSS) D RWY 20L

ATIS 132.65	APP RIO 124.95 134.95 129.20 120.75 134.40 121.25 121.50				TWR RIO 118.70 121.50	GNDC RIO 121.70
N/A	FINAL CRS 307°	FAF: 2400'	LNAV/VNAV DA / (OCH): N/A	LNAV MDA / (OCH): N/A		

APCH Perdida: Subir para **4000'**. Curvar à ESQUERDA direto RJ942. Curvar à DIREITA no rumo **149** até RJ943. Curvar à DIREITA no rumo **160** até RJ249 para espera.

Missed APCH: Climb to **4000'**. Turn LEFT direct to RJ942. Turn RIGHT course **149** up to RJ943. Turn RIGHT course **160** up to RJ249 for holding.

RMK: 1) IAS MAX 160KT na aproximação final e nas trajetórias visuais. 2) INFO complementares no verso.
1) IAS MAX 160KT on final approach and visual trajectories. 2) See reverse side for additional INFO.



MAPT RJ948	2.0	3.0	4.0	RJ010	KT	090	110	130	150	170	190	
ALT	900	1537	1855	2174	2400	FPM	500	600	700	800	NA	NA
(HGT)	890	1526	1844	2163	2389	FAF-MAPT	NA					

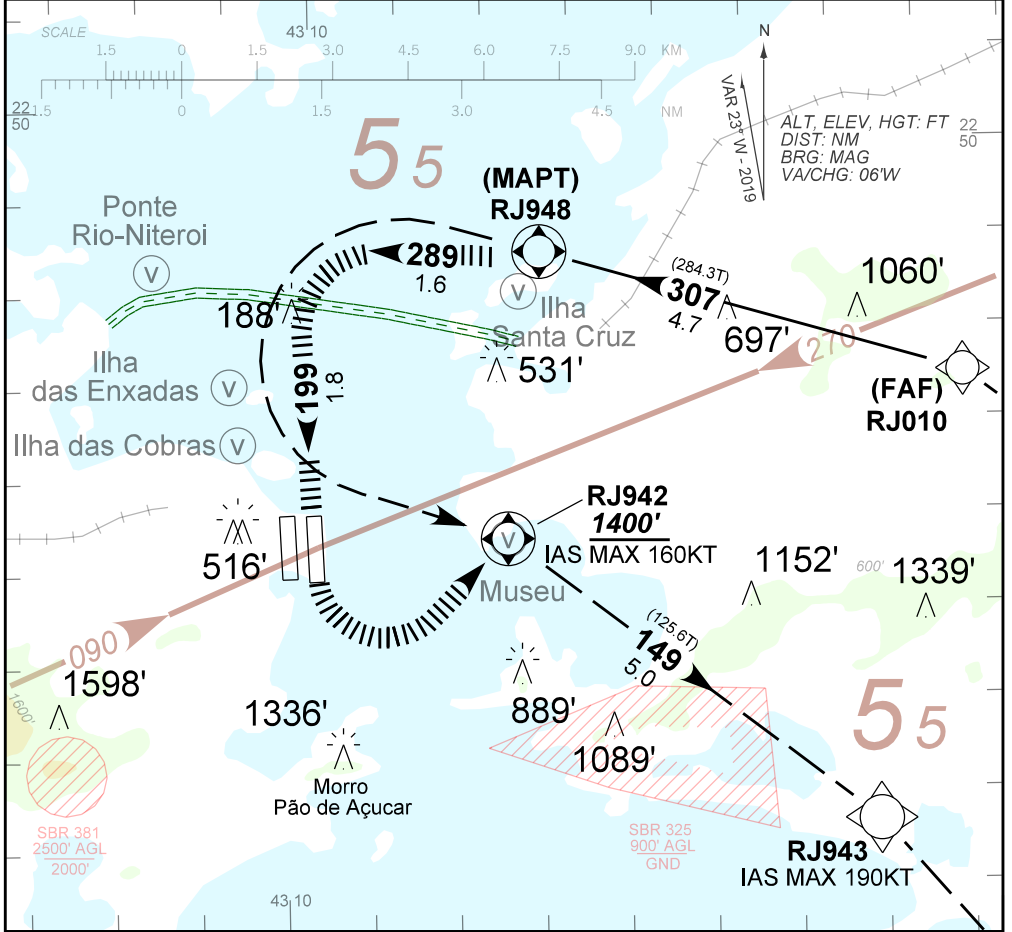
STRAIGHT-IN	CAT	A	B	C	D	E
	MDA / (OCH)					
LNAV	ALS/NO ALS/ RVR ALS (m)	NA				
	DA / (OCH)	NA				
LNAV/VNAV	ALS/NO ALS/ RVR ALS (m)	NA				
	MDA / (OCH)	900' / (890')				NA
CIRCLING	VIS (m)	NIL / 4400 / NIL				NA

CHANGES: LAYOUT, MDA, PROC, VAR, VIS.

AD ELEV: 11'

RNAV(GNSS) D RWY 20L

ATIS	APP RIO					TWR RIO		GNDC RIO	
132.65	124.95	134.95	129.20	120.75	134.40	121.25	121.50	118.70 121.50	121.70



TRAJETÓRIA VISUAL DEFINIDA RWY 20L
VISUAL PRESCRIBED TRACK RWY 20L

- 3) ALT MAX 1000' no RJ948 em caso de aproximação perdida.
ALT MAX 1000' on RJ948 in case of missed approach.
- 4) O piloto deverá estar em contato visual e prover sua própria separação com as referências visuais:
The pilot should have visual contact and provide his own separation with the visual references:
PONTE RIO-NITERÓI, ILHA DAS ENXADAS, ILHA DAS COBRAS, ILHA SANTA CRUZ e / and MUSEU.
- 5) Em caso de arremetida durante a manobra para circular: Subir para 4000' e voar direto RJ942 para interceptar a trajetória de aproximação perdida publicada.
In case of go around during the visual manoeuvring: Climbing to 4000' and fly direct to RJ942 to intercept the trajectory of the missed approach published.

CHANGES: LAYOUT, MDA, PROC, VAR, VIS.