

CARTA DE APROXIMAÇÃO  
POR INSTRUMENTOS (IAC)

BELO HORIZONTE / Tancredo Neves, INTL (SBCF)

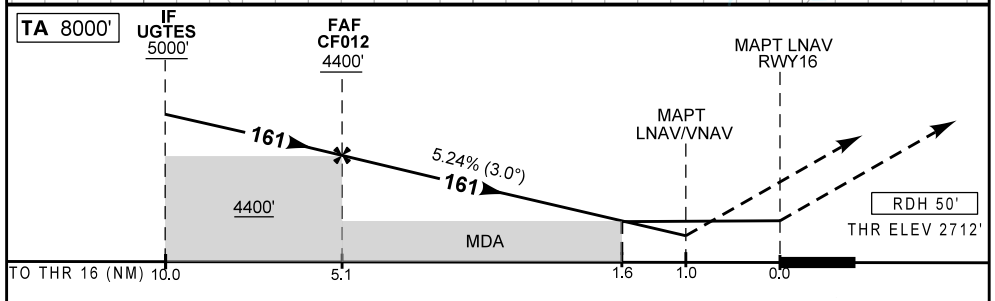
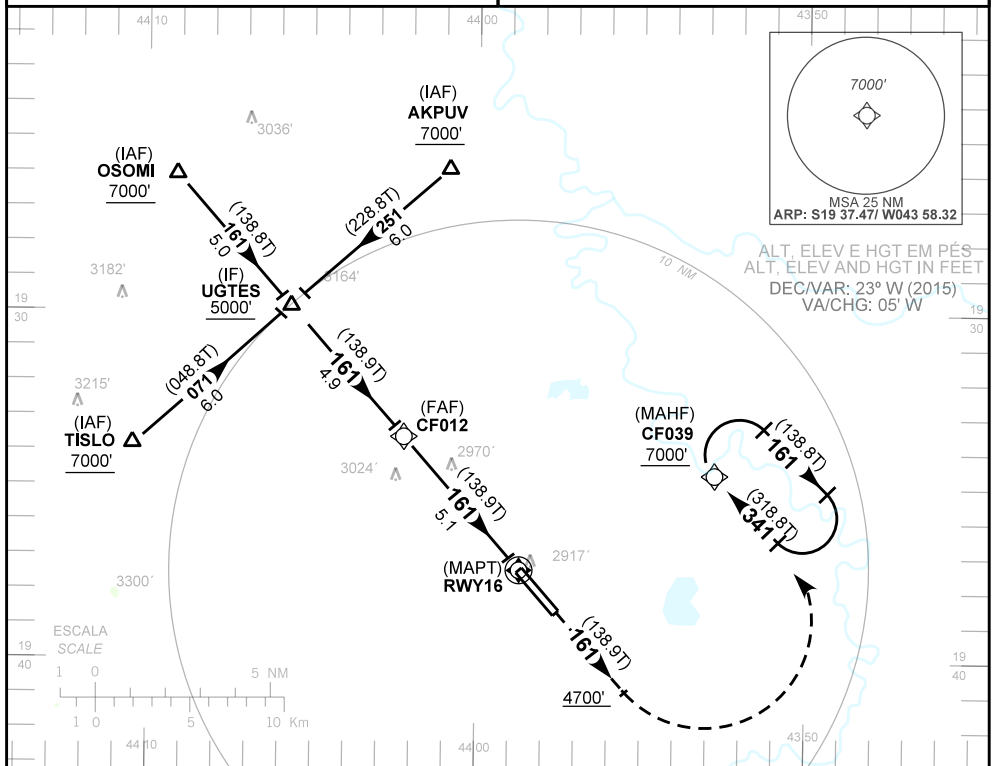
INSTRUMENT APPROACH CHART (IAC)

**RNAV (GNSS) RWY 16**

AD ELEV: 2713'	D-ATIS 127.85	APP BELO HORIZONTE 119.10 119.30 119.65 120.20 128.55 129.10 129.40 121.50	TWR CONFINES 118.20 121.50	GNDC CONFINES 121.90
----------------	------------------	--	-------------------------------	-------------------------

RMK: 1) Para sistemas não compensados, LNAV/VNAV não autorizado abaixo de 0°C ou acima de 40°C.  
 Aproximação Perdida: Subir para 7000'. Manter o rumo 161 até 4700'. Então, curvar à esquerda para espera em CF039.

RMK: 1) For uncompensated systems, LNAV/VNAV procedure not authorized below 0°C or above 40°C.  
 Missed Approach: Climb to 7000'. Maintain course 161 until 4700'. Then, turn left for holding at CF039.



CF012	4.0	3.0	2.0	1.6	1.0	RWY16	KT	090	110	130	150	170	190
4400	4035	3717	3398	3270	3076	ALT	FPM	500	600	700	800	900	1000
1688	1323	1005	686	558	364	(HGT)	FAF-MAPT	NA					

POUSO DIRETO STRAIGHT-IN	CAT	A	B	C	D	E	
	DA / OCH	3076 / 370					NA
LNAV/VNAV	ALS/NO ALS/ RVR ALS (m)	1000 / 1700 / NIL					NA
	MDA / OCH	3270 / 560					NA
LNAV	ALS/NO ALS/RVR ALS (m)	1000 / 1700 / NIL			1800 / 2500 / NIL		

CIRCULAR TO CIRCLE	MDA / OCH	NA
	VIS (m)	

CHANGES: DATS: MINM OPR.