

INSTRUMENT APPROACH CHART (IAC)

SALVADOR / Deputado Luís Eduardo Magalhães, INTL (SBSV)

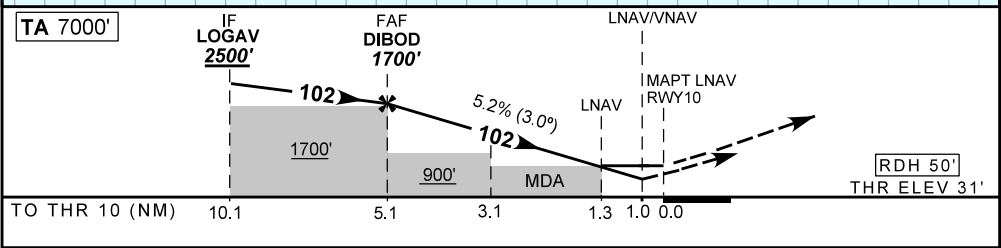
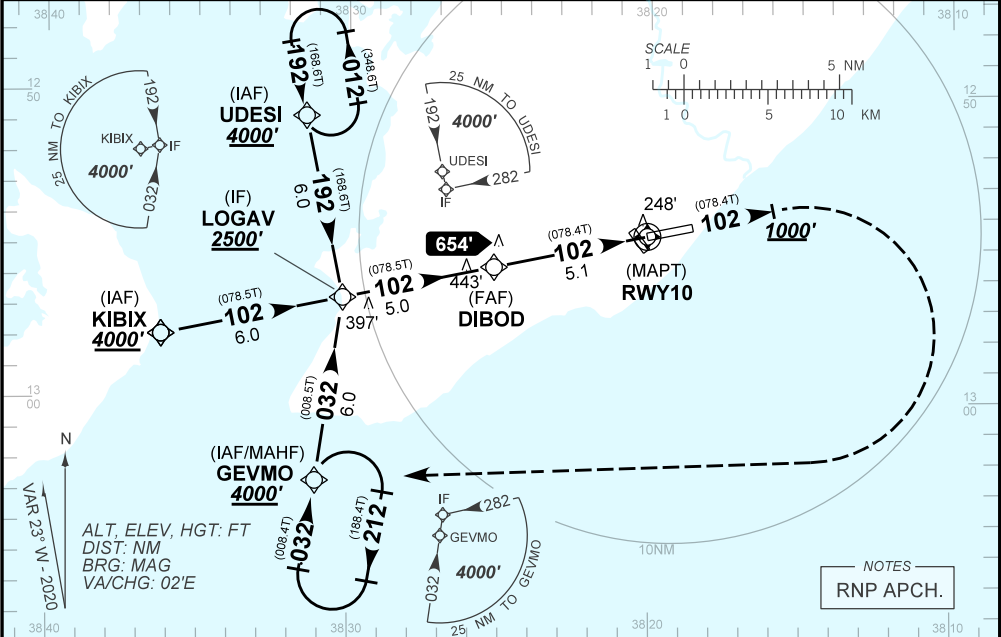
AD ELEV: 63'

RNAV(GNSS) RWY 10

D-ATIS 127.75	APP SALVADOR 119.35 119.80 120.80 129.45	TWR SALVADOR 118.30 118.60 118.95 121.10 121.50	GNDC SALVADOR 121.90
N/A	FINAL CRS 102°	FAF: 1700'	LNAV/VNAV DA / (OCH): 409' / (378')
			LNAV MDA / (OCH): 500' / (470')

APCH Perdida: Subir para **4000'**. Manter rumo **102** até cruzar **1000'**. Após, curvar à DIREITA direto GEVMO para espera.
 Missed APCH: Climb to **4000'**. Maintain course **102** until passing **1000'**. After, turn RIGHT direct to GEVMO for holding.

RMK: Para sistemas não compensados Baro-VNAV, LNAV/VNAV NÃO AUTORIZADO abaixo de 0°C ou acima de 46°C.
 For uncompensated systems Baro-VNAV, LNAV/VNAV NOT AUTHORIZED below 0°C or above 46°C.



	DIBOD	4.0	3.1	2.0	1.3	RWY10	KT	090	110	130	150	170	190
		1700	1354	1068	718	500	FPM	500	600	700	800	900	NA
		1669	1323	1037	687	470	FAF-MAPT	NA					

STRAIGHT-IN	CAT	A	B	C	D	E
LNAV/VNAV	DA / (OCH)	409' / (378')				NA
	ALS/NO ALS/ RVR ALS (m)	NIL / 1700 / NIL				
LNAV	MDA / (OCH)	500' / (470')				
	ALS/NO ALS/ RVR ALS (m)	NIL / 1700 / NIL		NIL / 2200 / NIL		
CIRCLING	MDA / (OCH)	NA				
	VIS (m)	NA				

CHANGES: DEC. WPT.