

**INSTRUMENT APPROACH
CHART (IAC)**

CAXIAS DO SUL/ Campo dos Bugres (SBCX)

AD ELEV: 2474'

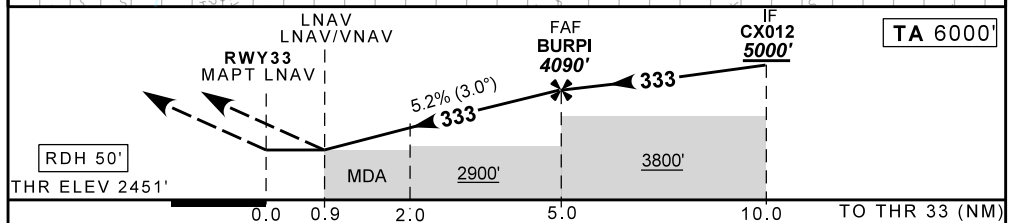
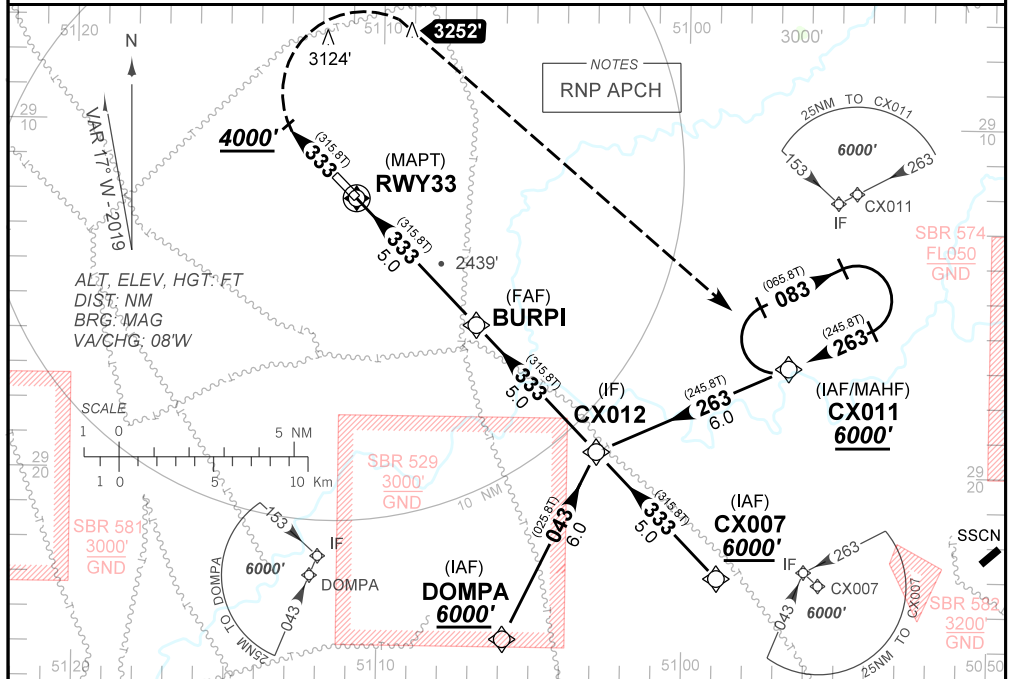
RNAV(GNSS) Z RWY 33

ATIS NIL	APP PALEGRE 119.00 120.10 120.55 128.90 121.50	AFIS CAXIAS 131.60	GNDC NIL
N/A	FINAL CRS 333°	FAF: 4090'	LNAV/VNAV DA / (OCH): 2772' / (330')
		LNAV: MDA / (OCH): 2790' / (340')	

APCH Perdida: Subir para **6000'** no rumo **333**. Ao passar **4000'**, curvar à DIREITA direto CX011 para espera.

Missed APCH: Climb to **6000'** on course **333**. On passing **4000'**, turn RIGHT direct to CX011 for holding.

RMK: Para sistemas não compensados, LNAV/VNAV NÃO AUTORIZADO abaixo de -10°C.
For uncompensated systems, LNAV/VNAV procedure NOT AUTHORIZED below -10°C.



RWY33	1.0	2.0	3.0	4.0	BURPI	KT	090	110	130	150	170	190
ALT	2818	3136	3454	3772	4090	FPM	500	600	700	800	900	NA
(HGT)	367	685	1003	1321	1639	FAF-MAPT	NA					

STRAIGHT-IN	CAT	A	B	C	D	E	
	DA / (OCH)	2772' / (330')					NA
LNAV/VNAV	ALS/NO ALS/RVR ALS (m)	NIL / 1500 / NIL					
	MDA / (OCH)	2790' / (340')					
LNAV	ALS/NO ALS/RVR ALS (m)	NIL / 1600 / NIL					
	MDA / (OCH)	NA					
CIRCLING	MDA / (OCH)	NA					
	VIS (m)	NA					

CHANGES: DEC. WPT.