

INSTRUMENT APPROACH CHART (IAC)

SÃO PEDRO DA ALDEIA / Tenente Jorge Henrique Möller, MIL (SBES)

RNAV(GNSS) Z RWY 25

AD ELEV: 61'

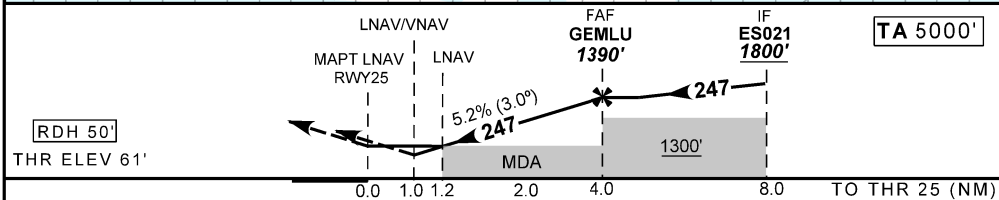
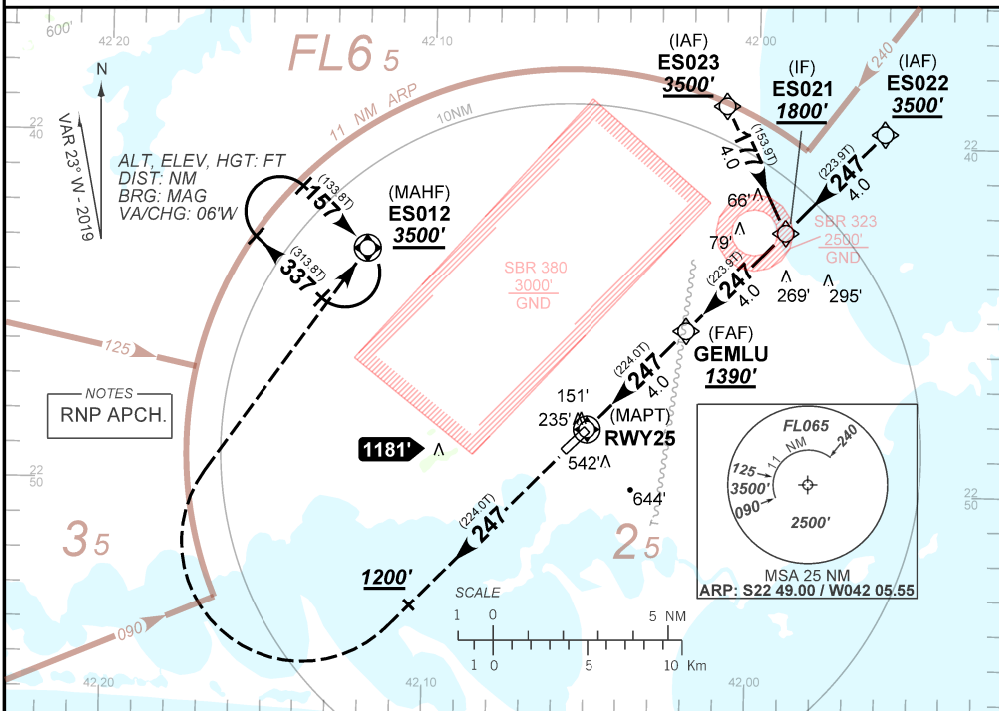
ATIS NIL	APP ALDEIA 119.45 120.30	TWR ALDEIA 118.30 122.80 (MIL) 121.50	GNDC ALDEIA 121.90
N/A	FINAL CRS 247°	FAF 1390'	LNAV/VNAV DA / (OCH): 454' / (393')
			LNAV MDA / (OCH): 500' / (440')

APCH Perdida: Subir para **3500'**. Manter o rumo **247** até **1200'** após curvar à DIREITA direto ES012 para espera.

Missed APCH: Climb to **3500'**. Maintain course **247** until **1200'** after turn RIGHT direct to ES012 for holding.

RMK: 1) Para sistemas não compensados Baro-VNAV, LNAV/VNAV NÃO AUTORIZADO abaixo de 0°C ou acima de 48°C.

1) For uncompensated systems Baro-VNAV, LNAV/VNAV NOT AUTHORIZED below 0°C or above 48°C.



RWY25	1.2	2.0	3.0	GEMLU															
ALT	500	748	1066	1390															
(HGT)	440	687	1005	1329															

STRAIGHT-IN	CAT	A	B	C	D	E
LNAV/VNAV	DA / (OCH)	454' / (393')				NA
	ALS/NO ALS/ RVR ALS (m)	NIL/ 1600 / NIL				
LNAV	MDA / (OCH)	500' / (440')				
	ALS/NO ALS/RVR ALS (m)	NIL / 1600 / NIL				
CIRCLING	MDA / (OCH)	NA				
	VIS (m)	NA				

CHANGES IDENT.

AMDT 2010C 10 SEP 20

DEPARTAMENTO DE CONTROLE DO ESPAÇO AÉREO

SBES_IAC_00Z 1/1
IAC RNAV(GNSS) Z RWY 25