

**INSTRUMENT APPROACH GUARANTÁ DO NORTE / Campo de Provas Brigadeiro Veloso, MIL (SBCC)
CHART (IAC)**

AD ELEV: 1777'

RNAV(GNSS) Z RWY 30

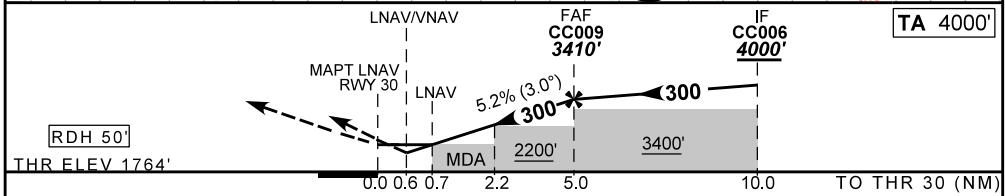
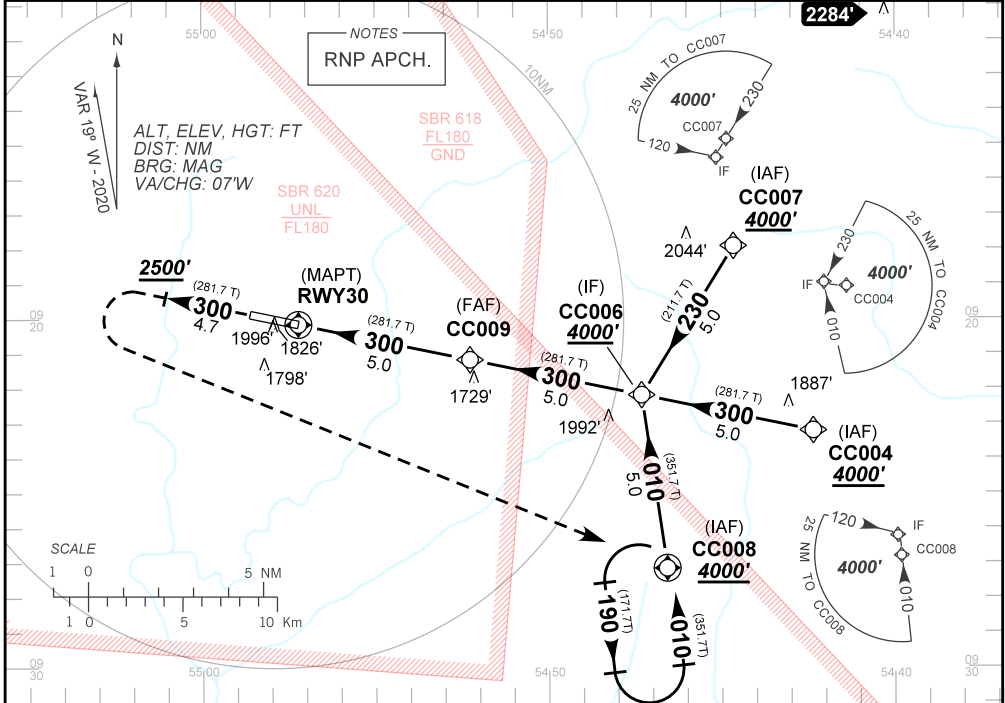
ATIS NIL	APP NIL	AFIS CACHIMBO 125.90	TWR NIL
N/A	FINAL CRS 300°	FAF: 3410'	LNAV/VNAV DA / (OCH): 2014' / (250')
			LNAV MDA / (OCH): 2040' / (280')

APCH Perdida: Subir para **4000'**. Manter rumo **300°** até passar **2500'**. Após, curvar à ESQUERDA direto CC008 para espera.

Missed APCH: Climb to **4000'**. Maintain course **300°** after passing **2500'**. After, turn LEFT direct to CC008 for holding.

RMK: Para sistemas não compensados Baro-VNAV, LNAV/VNAV NAO AUTORIZADO abaixo de -20°C ou acima de 50°C.

For uncompensated systems Baro-VNAV, LNAV/VNAV NOT AUTHORIZED below -20°C or above 50°C.



RWY30	0.7	1.0	2.0	3.0	4.0	CC009
ALT	2040	2130	2450	2770	3090	3410
(HGT)	276	366	686	1006	1326	1646

KT	090	110	130	150	170	190
FPM	500	600	700	800	900	1000
FAF-MAPT	NA					

STRAIGHT-IN	CAT	A	B	C	D	E
LNAV/VNAV	DA / (OCH)	2014' / (250')				NA
	ALS/NO ALS/ RVR ALS (m)	NIL / 1600 / NIL				
LNAV	MDA / (OCH)	2040' / (280')				
	ALS/NO ALS/RVR ALS (m)	NIL / 1600 / NIL				
CIRCLING	MDA / (OCH)	NA				
	VIS (m)	NA				

CHANGES: NEW CHART.