

**INSTRUMENT APPROACH
CHART (IAC)
AD ELEV: 787'**

FOZ DO IGUAÇU / Cataratas, INTL (SBFI)

RNAV (GNSS) RWY 14

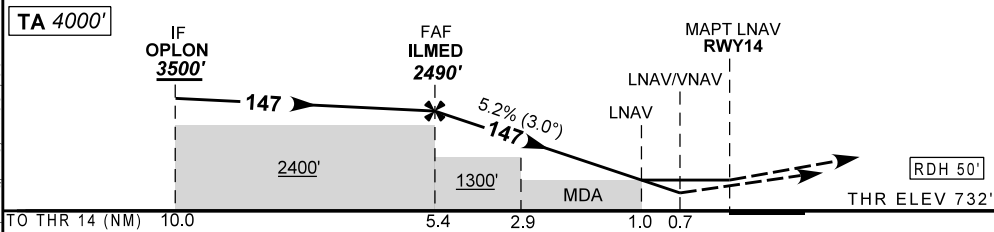
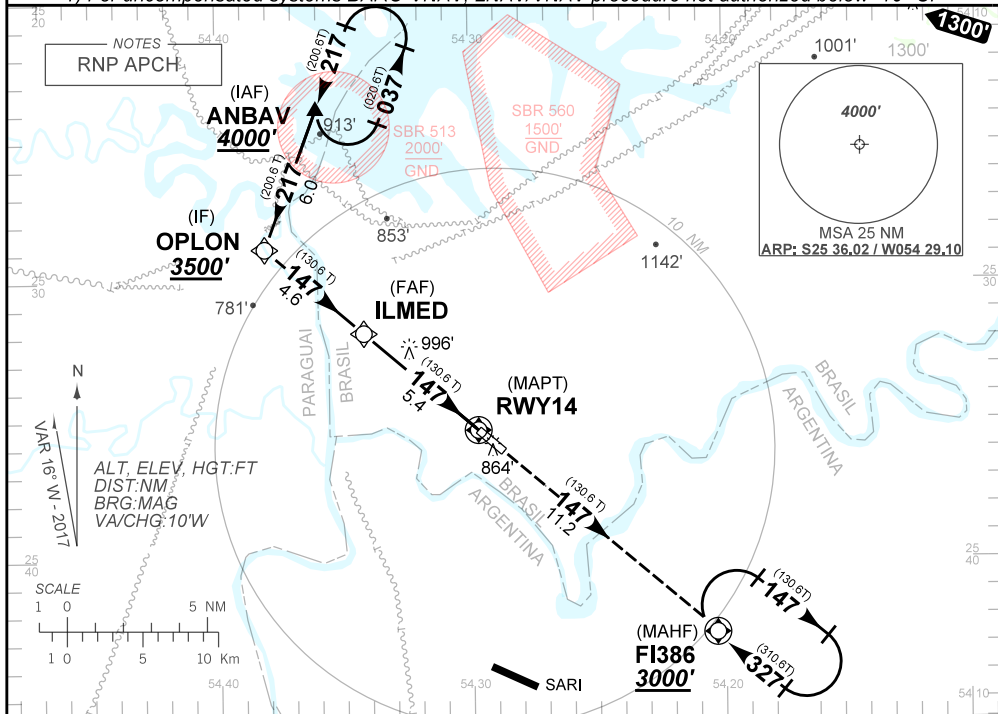
D-ATIS	APP FOZ 119.15 120.30 121.50		TWR FOZ 118.80	GNDC NIL
N/A	FINAL CRS 147°	FAF 2490'	LNAV/VNAV DA / (OCH): 1015' (290')	LNAV MDA / (OCH): 1100' (370')

APCH Perdida: Subir para **3000'** no rumo **147°** para espera em F1386.

Missed APCH: Climb to **3000'** on course **147°** for holding over F1386.

RMK: 1) Para sistemas BARO-VNAV não compensados, procedimento LNAV/VNAV não autorizado abaixo de -10° C.

1) For uncompensated systems BARO-VNAV, LNAV/VNAV procedure not authorized below -10° C.



FI007	5.0	4.0	3.0	2.0	1.0	RWY14	KT	90	110	130	150	170	190
2490	2374	2056	1737	1419	1100	ALT	FPM	500	600	700	800	900	NA
1758	1642	1324	1005	687	368	(HGT)	FAF-MAPT	NA					

STRAIGHT-IN	CAT	A	B	C	D	E
LNAV/VNAV	DA / OCH / TETO	1015 / 290 / 300				
	ALS/NO ALS/RVR (m)	800 / 1400 / NIL				
LNAV	MDA / OCH / TETO	1100 / 370 / 400				
	ALS/NO ALS/RVR (m)	800 / 1600 / NIL		1000 / 1700 / NIL		
CIRCLING	MDA / OCH / TETO	NA				
	VIS (m)	NA				

MODIFICAÇÕES / CHANGES: DEC. ELEV. F. FREQ. HDG. LAYOUT. OCH.

AIRAC AMDT 18/17 12 OCT 17

DEPARTAMENTO DE CONTROLE DO ESPAÇO AÉREO

SBFI IAC_000 1
IAC RNAV (GNSS) RWY 14