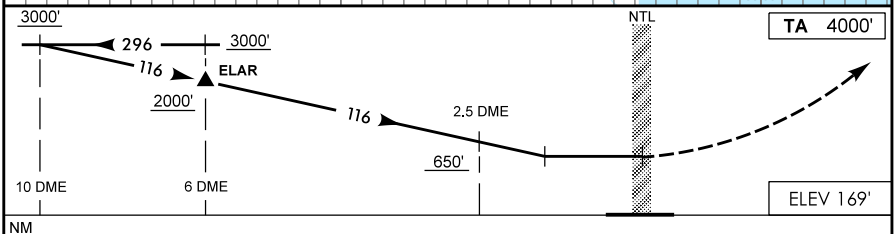
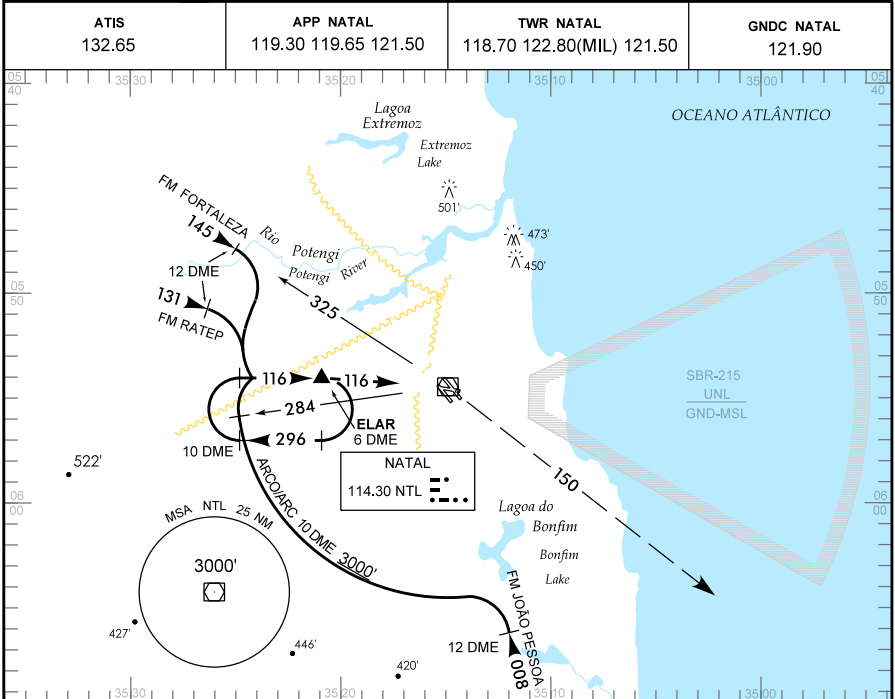


NATAL / Augusto Severo, MIL (SBNT)  
RN-BRASIL  
VOR/DME Y RWY 12

<b>IAC - SBNT</b>	<b>APP NATAL</b> 119.30 119.65 121.50	<b>TWR NATAL</b> 118.70 122.80(MIL) 121.50	<b>GNDC NATAL</b> 121.90
-------------------	--	---	-----------------------------



**APROXIMAÇÃO PERDIDA** SUBIR PARA 3000' NA RDL 150.

**RMK:** NIL.

C	POUSO DIRETO RWY 12		IFR OPS DIURNA / NOTURNA		PARA CIRCULAR			
	VOR/DME				CAT	MDA	TETO	VIS
A	MDA 530'		TETO 400'		A	570'	500'	1600 M
B					B	670'	600'	2400 M
C					C	760'		3600 M
D					D	860'	700'	4400 M
E					E	960'	800'	

RAZÃO DE DESCIDA NA APROXIMAÇÃO FINAL							
KT	090	110	130	150	170	190	
FPM	450	550	650	750	850	950	

MODIFICAÇÕES/CHANGES IDENT. MDA, MIN. OPR.