

STANDARD DEPARTURE CHART
INSTRUMENT (SID)

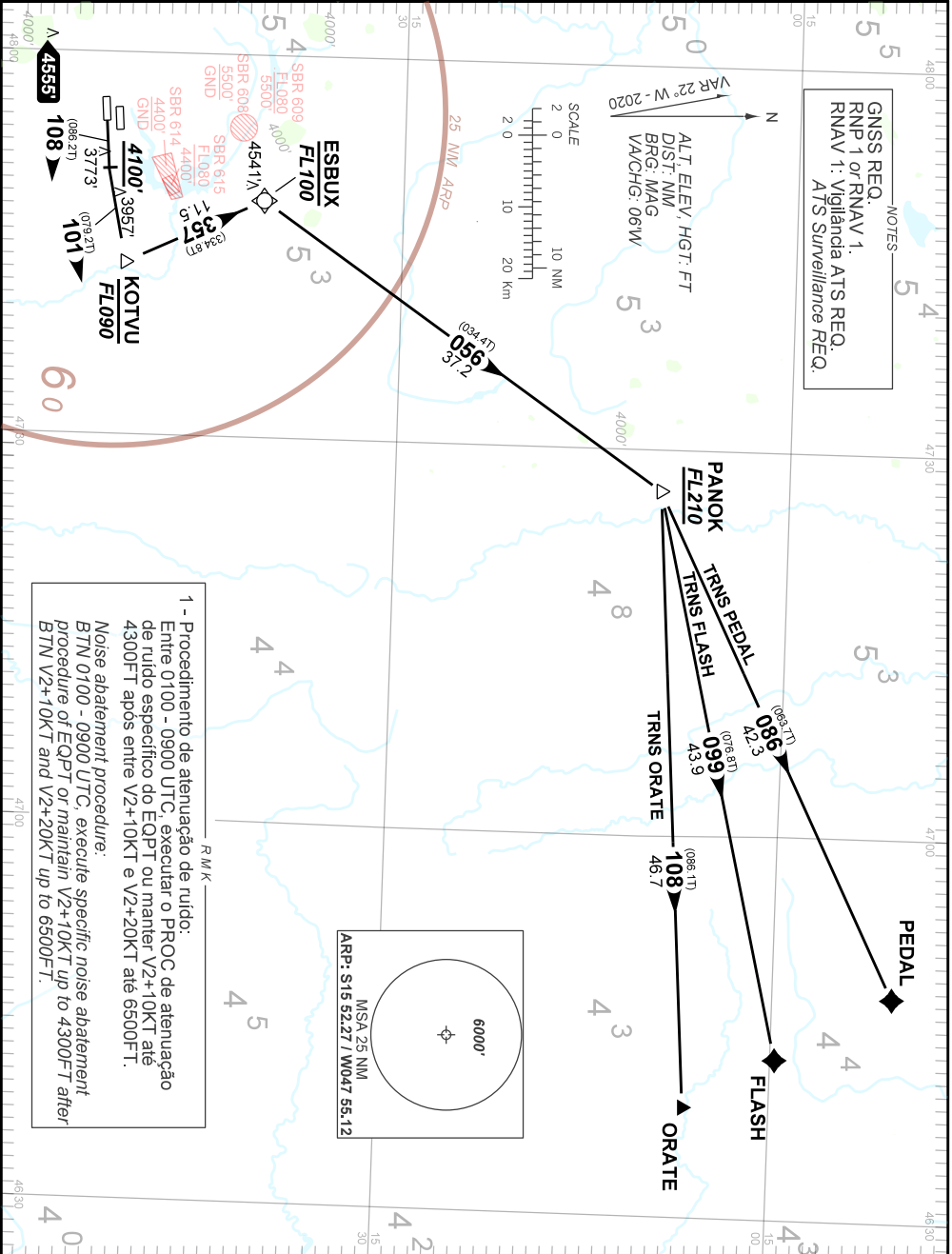
BRASÍLIA / Pres. Juscelino Kubitschek, INTL (SBBR)

RWY 11R

RNAV KOTVU 2C

AD ELEV: 3498'

TA 7000'	TWR BRASÍLIA 118.10 118.45 118.75 121.50	APP BRASÍLIA 120.65 129.15 120.00 120.30 121.50	ACC BRASÍLIA 124.50 135.00 133.05 124.70 121.50
----------	---	---	---

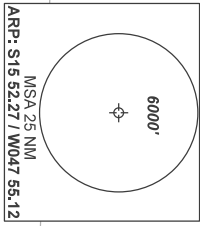


NOTES
GNSS REQ.
RNP 1 or RNAV 1
RNAV 1: Vigilância ATS REQ.
ATS Surveillance REQ.

ALT. ELEV. HGT. FT
DST. NM
BRG. MAG
VA/CHG. 06W



1 - Procedimento de atenuação de ruído:
Entre 0100 - 0900 UTC, executar o PROC. de atenuação de ruído específico do EQPT ou manter V2+10KT até 4300FT após entre V2+10KT e V2+20KT até 6500FT.
Noise abatement procedure:
BTN 0100 - 0900 UTC, execute specific noise abatement procedure of EQPT or maintain V2+10KT up to 4300FT after BTN V2+10KT and V2+20KT up to 6500FT.



CHANGES: EAC, FL IDENT.