

STANDARD DEPARTURE CHART  
INSTRUMENT (SID)

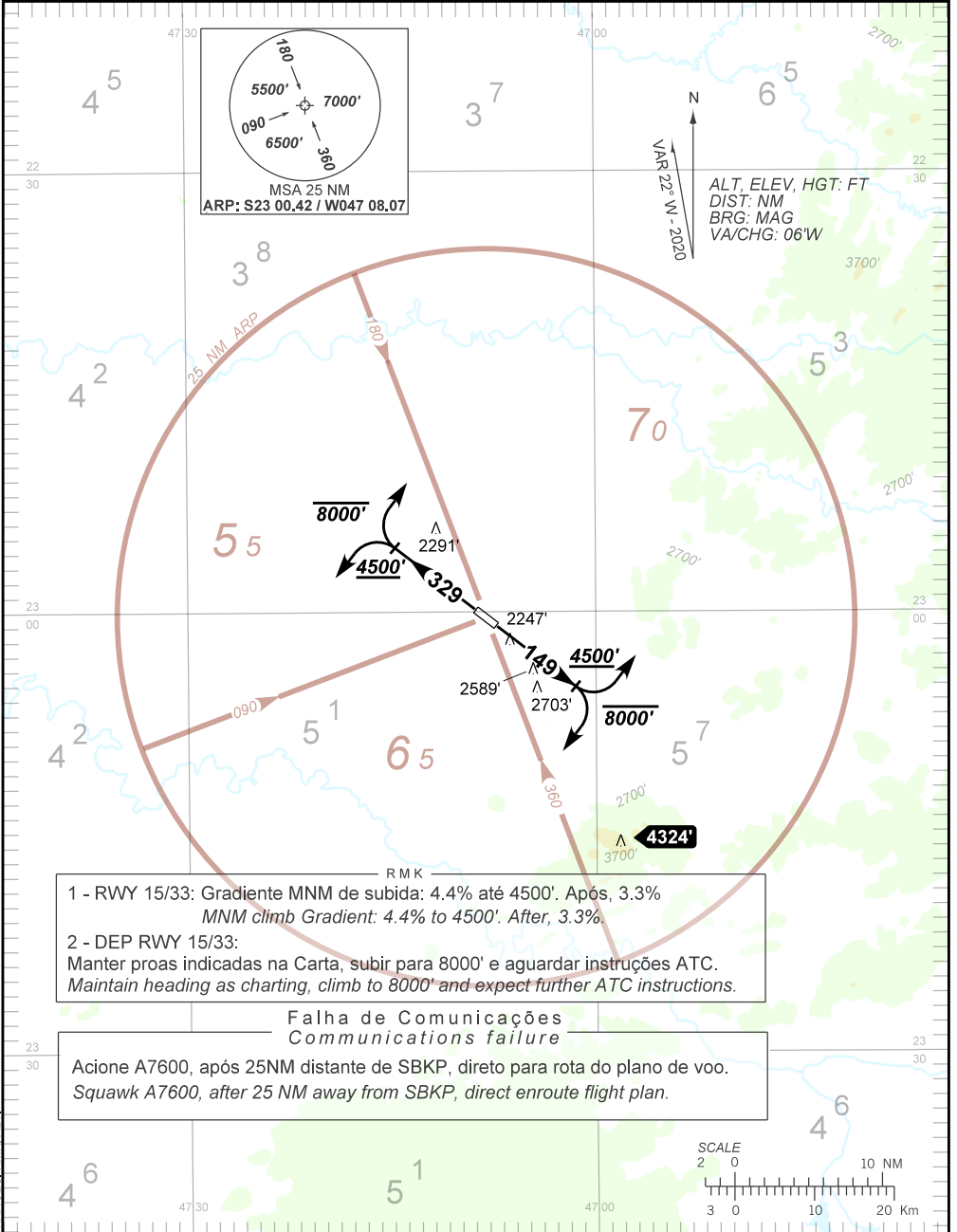
CAMPINAS / Viracopos, INTL (SBKP)

RWY 15/33

OMNI

AD ELEV: 2170'

TA 8000'	TWR CAMPINAS	APP SÃO PAULO	ACC BRASÍLIA	ACC CURITIBA
	118.25	135.75 120.05 119.80	126.15 127.25 123.35	126.75 127.40 125.40
		119.25 121.40 129.00 132.10 120.25	134.00 126.80 128.50	124.40 132.80 126.50 126.95 128.25



- 1 - RWY 15/33: Gradiente MNM de subida: 4.4% até 4500'. Após, 3.3%  
MNM climb Gradient: 4.4% to 4500'. After, 3.3%
- 2 - DEP RWY 15/33:  
Manter proas indicadas na Carta, subir para 8000' e aguardar instruções ATC.  
Maintain heading as charting, climb to 8000' and expect further ATC instructions.

Falha de Comunicações  
Communications failure

Acione A7600, após 25NM distante de SBKP, direto para rota do plano de voo.  
Squawk A7600, after 25 NM away from SBKP, direct enroute flight plan.

CHANGES: RMK ALT.