

CARTA DE APROXIMAÇÃO
POR INSTRUMENTOS (IAC)
INSTRUMENT APPROACH CHART (IAC)

BRASÍLIA / Pres. Juscelino Kubitschek, INTL (SBBR)

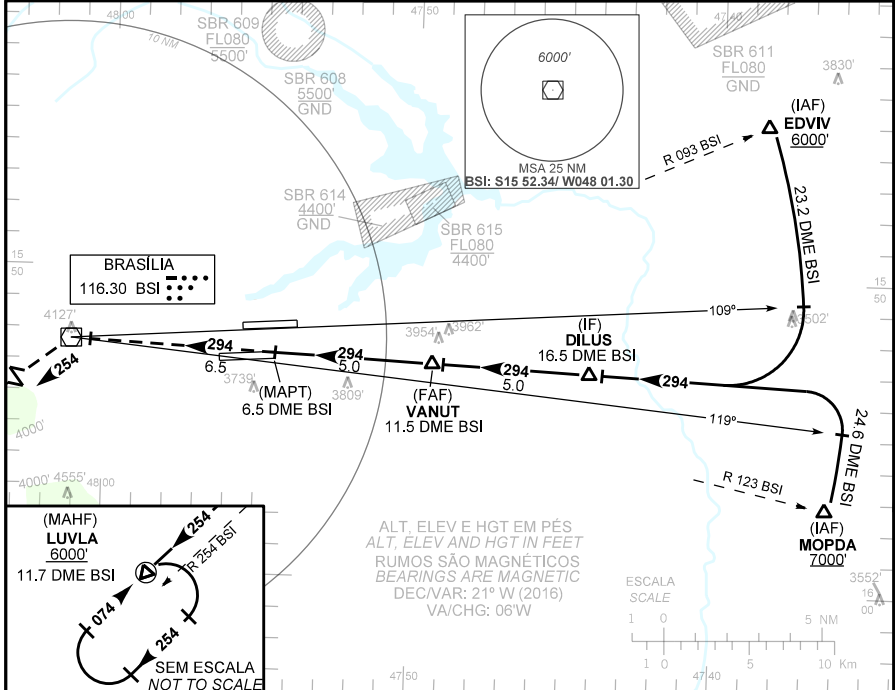
VOR Z RWY 29L

AD ELEV: 3497'	ATIS 127.80	APP BRASÍLIA 119.20 119.50 119.70 120.00 129.60 121.50	TWR BRASÍLIA 118.10 118.45 121.50	GND: BRASÍLIA 121.80
----------------	----------------	---	--------------------------------------	-------------------------

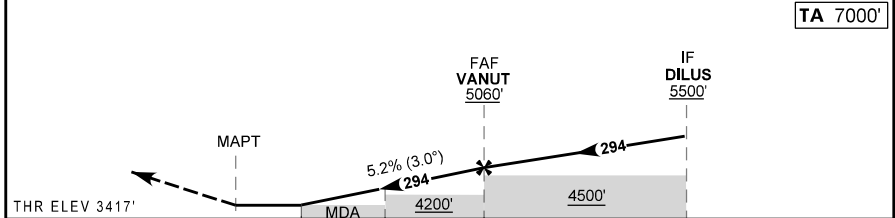
RMK: DME requerido.
RMK: DME required.

Aproximação Perdida: Subir para 6000' no rumo 294 até VOR BSI. Após curvar à esquerda RDL 254 BSI até LUVLA para espera.

Missed Approach: Climb to 6000' course 294 until BSI VOR. After turn left 254 BSI RDL until LUVLA for holding.



TA 7000'



THR ELEV 3417'	0.0	1.9	3.8	5.0	10.0	TO THR 29L (NM)
	6.5	8.4	10.3	11.5	16.5	TO BSI (DME)

MAPT	1.9	2.0	3.0	4.0	FAF	KT	090	110	130	150	170	190
ALT	4060	4104	4422	4741	5060	FPM	500	600	700	800	900	1000
(HGT)	643	687	1005	1324	1642	FAF-MAPT 5NM	3:20	2:43	2:18	2:00	1:45	1:35

POUSO DIRETO STRAIGHT-IN	CAT	A	B	C	D	E
	MDA / OCH / TETO	4060 / 643 / 700				
VOR/DME	ALS/NO ALS/ RVR ALS (m)	750 / 1600 / NIL	800 / 1600 / NIL	2300 / 3000 / NIL		
	MDA / OCH / TETO	NA				
CIRCULAR TO CIRCLE	MDA / OCH / TETO	NA				
	VIS (m)	NA				

MODIFICAÇÕES / CHANGES: DSF