

STANDARD DEPARTURE CHART  
INSTRUMENT (SID)

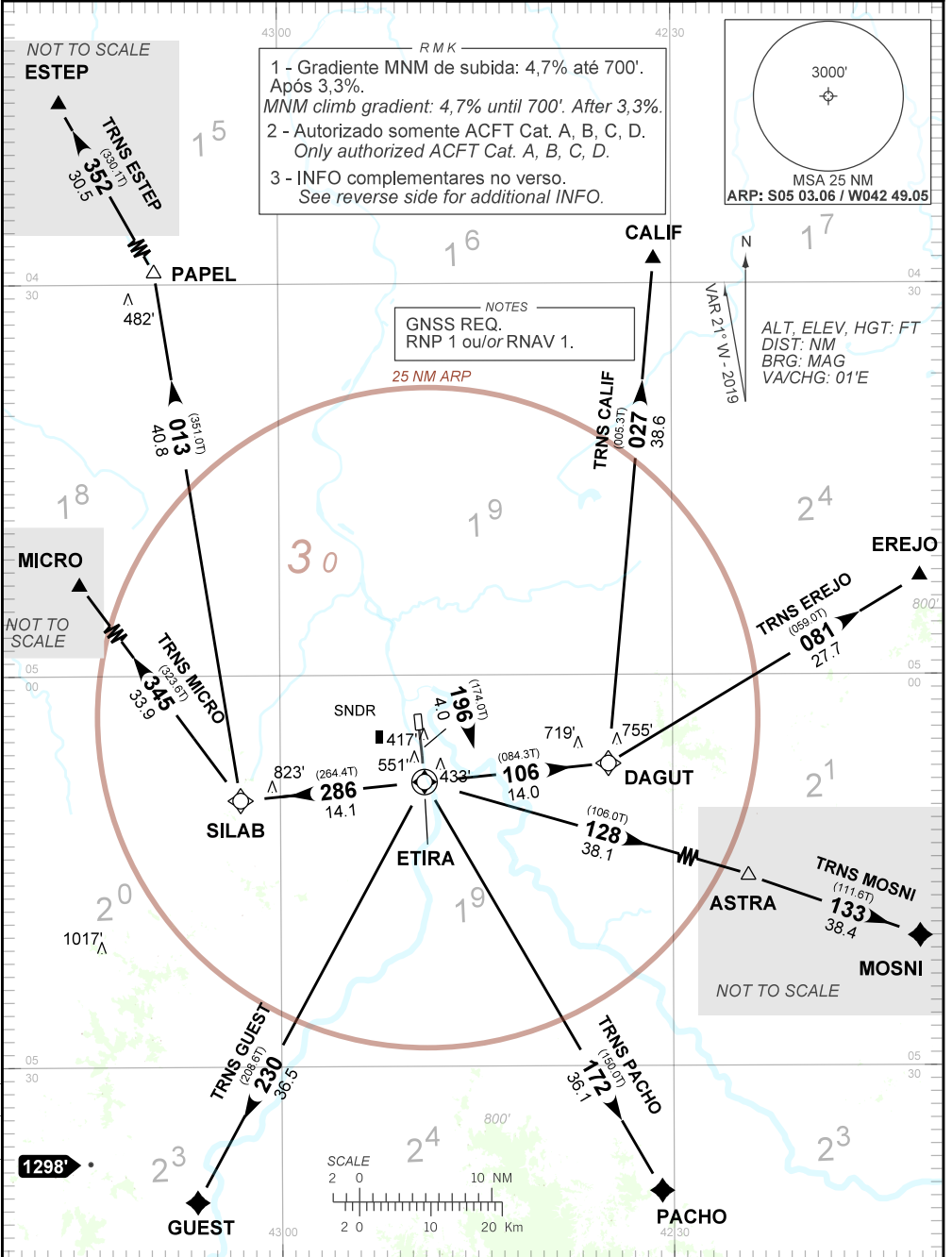
TERESINA/ Senador Petronio Portella (SBTE)

RWY 20

RNAV ETIRA 1B

AD ELEV: 220'

|          |                        |                        |                                       |                                    |
|----------|------------------------|------------------------|---------------------------------------|------------------------------------|
| TA 4000' | TWR TERESINA<br>118.80 | APP TERESINA<br>119.60 | ACC AMAZONICO<br>126.15 133.70 121.50 | ACC RECIFE<br>125.15 135.25 121.50 |
|----------|------------------------|------------------------|---------------------------------------|------------------------------------|



— R M K —

4 - Obstáculos próximos não considerados para cálculo do gradiente do procedimento (PDG):

*Close-in obstacles not considered for procedure gradient (PDG):*

- poste/pole: a partir de/ from THR 02, AZM 216, DIST 115M, ELEV 239'
- muro/wall: a partir de/ from THR 02, AZM 194, DIST 135M, ELEV 226'
- prédio/building: a partir de/ from THR 02, AZM 142, DIST 213M, ELEV 255'
- torre/tower: a partir de/ from THR 02, AZM 177, DIST 1503, ELEV 416'

CHANGES: PROC. IDENT. DEC. LAYOUT.