

**INSTRUMENT APPROACH CHART (IAC) GUARANTÁ DO NORTE/ Campo de Provas Brigadeiro Veloso, MIL (SBCC)**

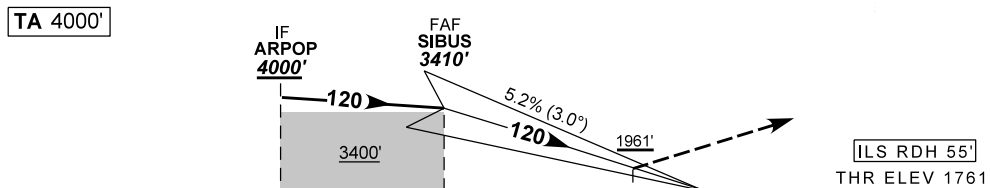
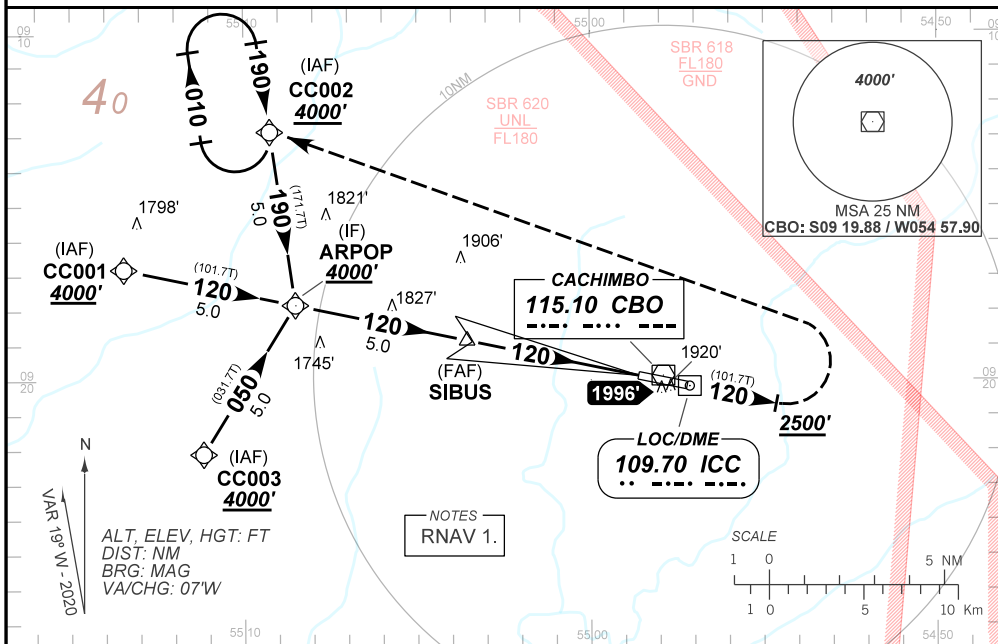
**AD ELEV: 1777'**

**ILS W RWY 12**

ATIS NIL	APP NIL	AFIS CACHIMBO 125.90	GNDC NIL
LOC ICC 109.70 MHz	FINAL CRS 120°	FAF: 3410'	CAT I DA / (OCH): 1961' / (200')

APCH Perdida: subir para **4000'**. Manter rumo **120** até cruzar **2500'**. Então, curvar à ESQUERDA, direto para CC002 para espera.  
 Missed APCH: climb to **4000'**. Maintain course **120** until passing **2500'**. Then, turn LEFT direct to CC002 for holding.

RMK: NIL.



TO THR 12 (NM)	10.0	5.0	0.5	0.0
TO ICC (DME)	11.5	6.5	2.0	1.5

NIL	RWY12	KT	090	110	130	150	170	190
NIL	ALT	FPM	NIL					
NIL	(HGT)	FAF-MAPT	NA					

STRAIGHT-IN	CAT	A	B	C	D	E
CAT I	DA / (OCH)	1961' / (200')				NA
	ALS/NO ALS/ RVR ALS (m)	NIL / 1200 / NIL				
CIRCLING	MDA / (OCH)	NA				
	VIS (m)	NA				

CHANGES: NEW CHART.