

INSTRUMENT APPROACH
CHART (IAC)

FORTALEZA / Pinto Martins, INTL (SBFZ)

AD ELEV: 82'

RNAV(GNSS) RWY 12

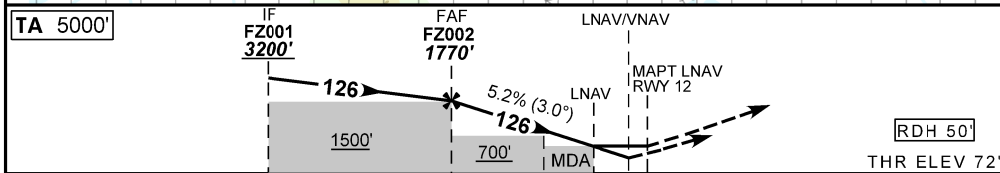
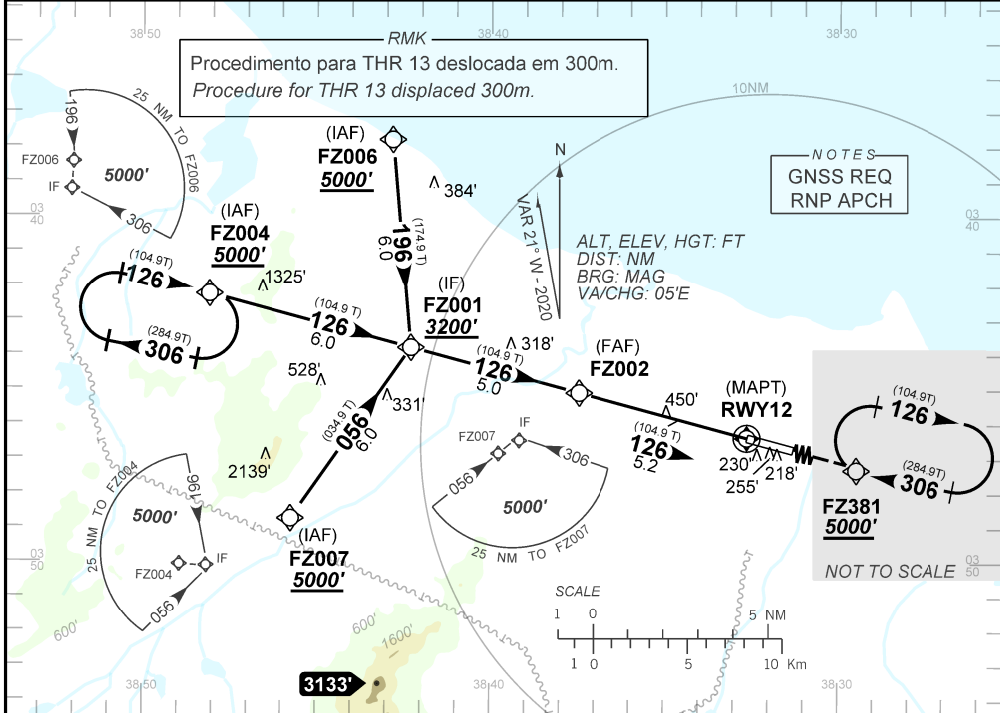
D-ATIS 127.70	APP FORTALEZA 120.50 133.00 134.55 121.50	TWR FORTALEZA 129.00 121.50	GNDC FORTALEZA 121.95
N/A	FINAL CRS 126°	FAF 1770'	MDA / (OCH): 510' / (440')
		LNAV/VNAV DA / (OCH): 434' / (362')	LNAV MDA / (OCH): 510' / (440')

APCH Perdida: Subir para **5000'** no rumo **126** para espera em FZ381.

Missed APCH: Climb to **5000'** on course **126** for holding at FZ381.

RMK: 1) Para sistemas não compensados Baro-VNAV, LNAV/VNAV NAO AUTORIZADO abaixo de -10°C ou acima de 50°C.

1) For uncompensated systems Baro-VNAV, LNAV/VNAV NOT AUTHORIZED below -10°C or above 50°C.



TA 5000'	IF FZ001 3200'	FAF FZ002 1770'	LNAV/VNAV	MAPT LNAV RWY 12	RDH 50'	THR ELEV 72'
TO THR 12 (NM)	10.2	5.2	2.2	1.2	1.0	0.0

FZ002	4.0	3.0	2.0	1.2	RWY12	KT	090	110	130	150	170	190
1770	1400	1085	770	510	ALT	FPM	500	600	700	800	900	1000
1698	1328	1013	698	438	(HGT)	FAF-MAPT	NA					

STRAIGHT-IN	CAT	A	B	C	D	E
LNAV/VNAV	DA / (OCH)	434' / (362')				NA
	ALS/NO ALS/ RVR ALS (m)	NIL / 1600 / NIL				
LNAV	MDA / (OCH)	510' / (440')				
	ALS/NO ALS/ RVR ALS (m)	NIL / 1600 / NIL		NIL / 2000 / NIL		
CIRCLING	MDA / (OCH)	NA				
	VIS (m)					

AMDT 2010C 10 SEP 20

DEPARTAMENTO DE CONTROLE DO ESPAÇO AÉREO

SBFZ_IAC_01G 1/1

IAC RNAV(GNSS) RWY 12