

STANDARD DEPARTURE CHART  
INSTRUMENT (SID)

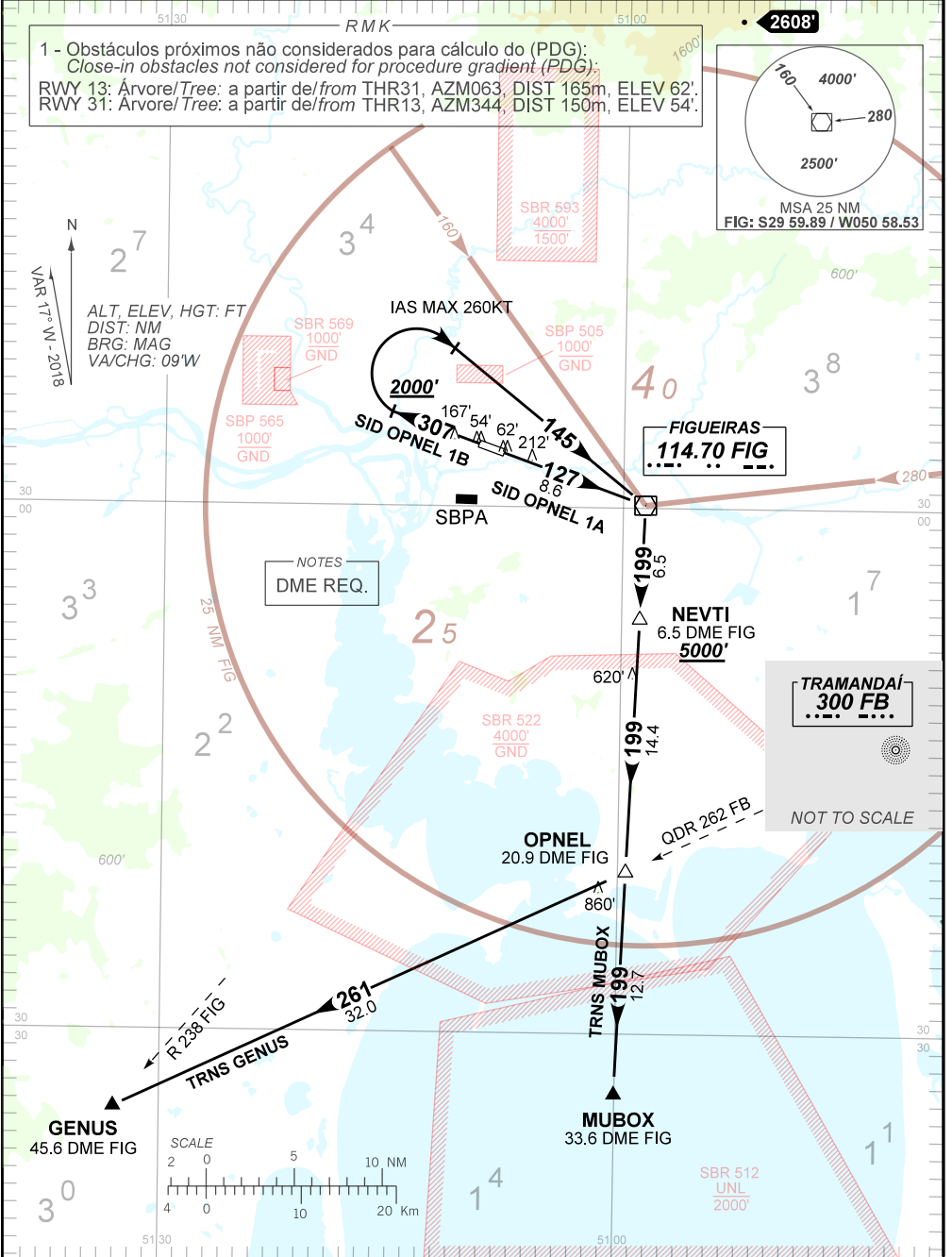
PORTO ALEGRE / Canoas, MIL (SBCO)

**CARTA DE USO EXCLUSIVO  
ACFT MILITARES**

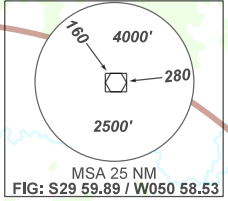
**RWY 13/31  
OPNEL 1A, 1B**

AD ELEV: 26'

TA 4000'	TWR CANOAS 118.50 122.80 (MIL) 121.50	APP PALEGRE 119.00 120.10 120.55 128.90 121.50	ACC CURITIBA 127.40 126.75 128.45 135.85 138.45 121.50
----------	--	--	--



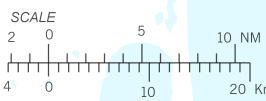
1 - Obstáculos próximos não considerados para cálculo do (PDG):  
Close-in obstacles not considered for procedure gradient (PDG):  
RWY 13: Árvore/Tree: a partir de/from THR31, AZM063, DIST 165m, ELEV 62'.  
RWY 31: Árvore/Tree: a partir de/from THR13, AZM344, DIST 150m, ELEV 54'.



ALT, ELEV, HGT: FT  
DIST: NM  
BRG: MAG  
VA/CHG: 09'W

NOTES  
DME REQ.

TRAMANDAÍ  
300 FB  
NOT TO SCALE



CHANGES: RMK.