

**INSTRUMENT APPROACH
CHART (IAC)**

ARACAJU / Santa Maria, INTL (SBAR)

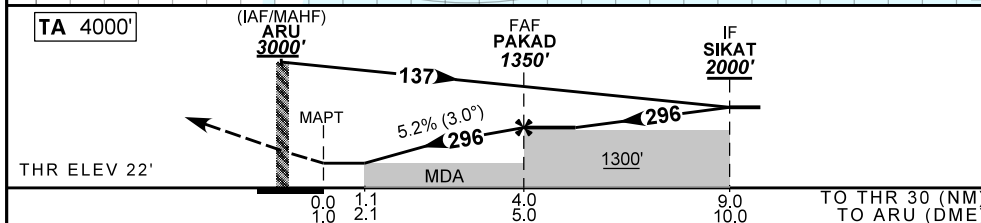
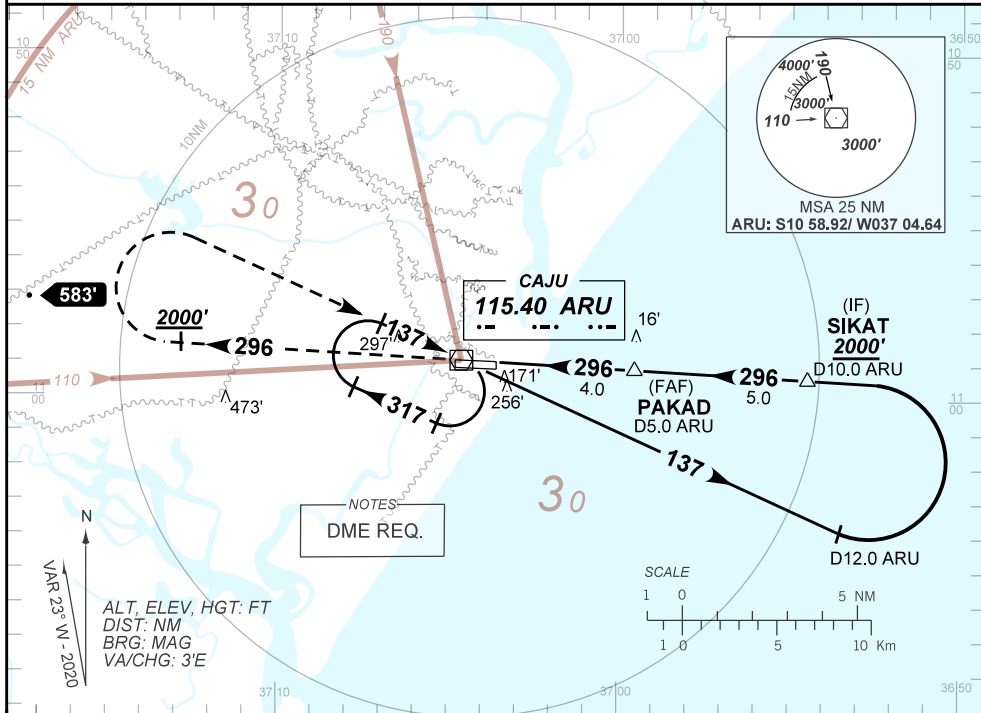
VOR V RWY 30

AD ELEV: 23'

ATIS NIL	APP ARACAJU 120.30 129.25 121.50	TWR ARACAJU 118.80	GNDC NIL
VOR ARU 115.40 MHz	FINAL CRS 296°	FAF: 1350'	VOR MDA / (OCH): 420' (400')

APCH Perdida: Subir para **3000'**. Manter RDL **296** do VOR ARU até cruzar **2000'**. Após, curvar à DIREITA direto ARU para espera.
Missed APCH: Climb to **3000'**. Maintain **296** RDL ARU VOR until passing **2000'**. After, turn **RIGHT** direct to ARU for holding.

RMK: NIL.



RWY30	1.1	2.0	3.0	PAKAD							
ALT	422	709	1027	1350							
(HGT)	400	687	1005	1328							
					KT	090	110	130	150	170	190
					FPM	500	600	700	800	900	NA
					FAF-MAPT			NA			

STRAIGHT-IN	CAT	A	B	C	D	E
	MDA / (OCH)	420' / (400')				NA
VOR	ALS/NO ALS/RVR ALS (m)	NIL / 1600 / NIL				NA
CIRCLING	MDA / (OCH)	NA				
	VIS (m)					

CHANGES: LAYOUT, MIN OPR, PROC.