

IAC - SBMN

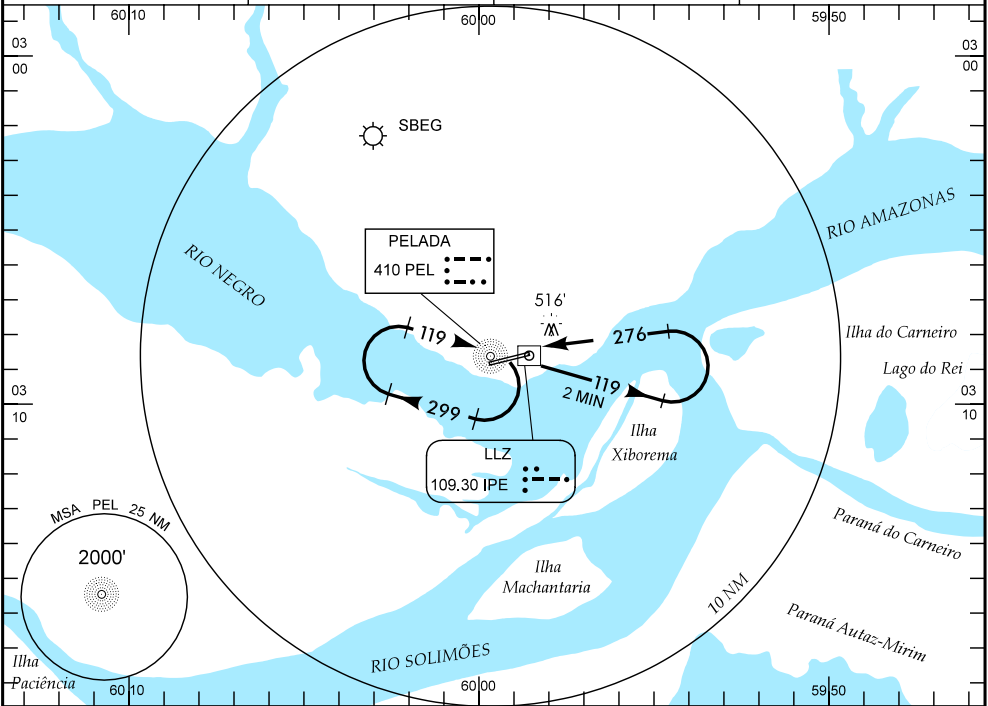
WGS-84

ATIS
127.65

APP MANAUS
119.25 119.70 120.40

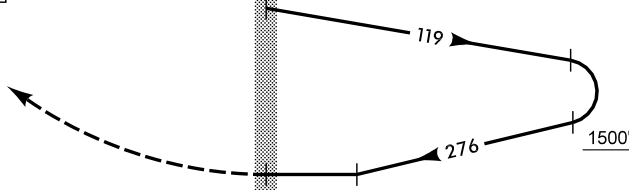
TWR MANAUS
118.10

GNDC
NIL



TA 5000'

2000' PEL



ELEV 267'

NM

APROXIMAÇÃO PERDIDA

SUBIR PARA 2000' NO QDR 276.

RMK: POUSO RWY 27 - CIRCULE SETOR S DO AERÓDROMO.

C	POUSO DIRETO RWY 27	IFR OPS	DIURNA / NOTURNA	PARA CIRCULAR (VER RMK)			
A	NDB			CAT	MDA	TETO	VIS
T	MDA 830'	TETO 600'		A	830'	600'	1900 M
A	VIS			B			2400 M
B				C			2400 M
C				D	880'	700'	3200 M
D				E			
E							

RAZÃO DE DESCIDA NA APROXIMAÇÃO FINAL

KT	90	110	130	150	170	190						
FPM	700											