

**INSTRUMENT APPROACH
CHART (IAC)**

BRASÍLIA / Pres. Juscelino Kubitscheck, INTL (SBBR)

AD ELEV: 3497'

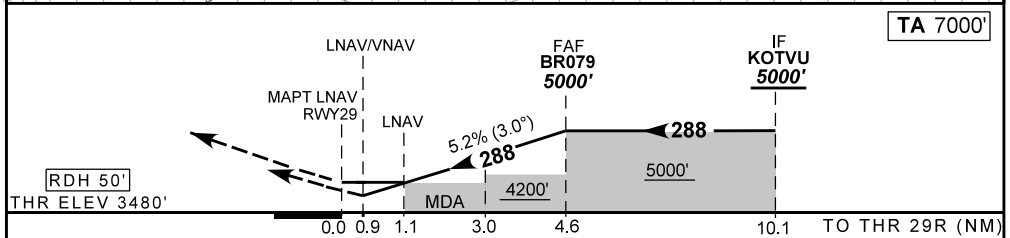
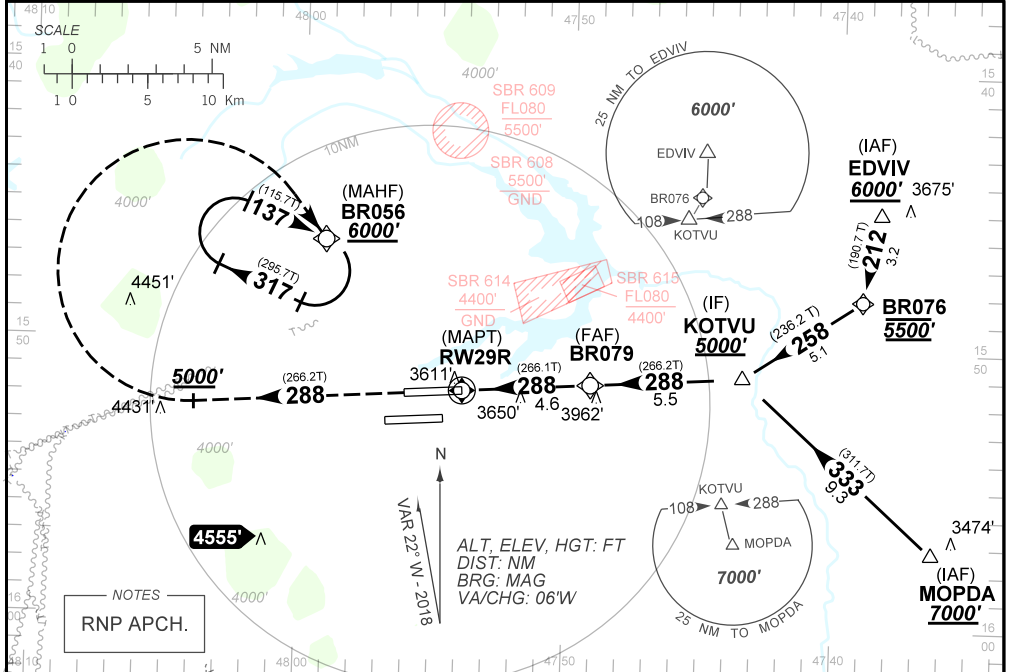
RNAV(GNSS) Y RWY 29R

D-ATIS 127.80	APP BRASÍLIA 119.20 119.50 119.70 120.00 120.65 129.15 129.60 121.50	TWR BRASÍLIA 118.10 118.45 118.75 121.50	GNDC BRASÍLIA 121.80 121.95
LOC ICT N/A	FINAL CRS 288°	FAF: 5000'	LNAV/VNAV DA / (OCH): REFER TO MNM LNAV DA / (OCH): 3880'/(400')

APCH Perdida: 1) Subir para **6000'**. Manter rumo **288** até cruzar **5000'**. Então curvar à DIREITA direto BR056 para espera.

Missed APCH: 1) Climb to **6000'**. Maintain course **288** until passing **5000'**. Then, turn RIGHT direct to BR056 for holding.

RMK: 1) Para sistemas não compensados Baro-VNAV, LNAV/VNAV NÃO AUTORIZADO abaixo de 0°C ou acima de 50°C.
1) For uncompensated systems Baro-VNAV, LNAV/VNAV NOT AUTHORIZED below 0°C or above 50°C.



RWY29R	1.1	2.0	3.0	4.0	BR079		KT	090	110	130	150	170	190
ALT	3880	4167	4485	4804	5000		FPM	500	600	700	800	900	NA
(HGT)	400	687	1005	1324	1520		FAF-MAPT	NA					

CHANGES: LAY-OUT, THR.	STRAIGHT-IN	CAT	A	B	C	D	E
	LNAV/VNAV	DA / (OCH)	3726' / (246')	3742' / (262')	3761' / (281')	3778' / (298')	NA
		ALS/NO ALS/ RVR ALS (m)	800 / 1600 / NIL				
	LNAV	MDA / (OCH)	3880' / (400')				
ALS/NO ALS/RVR ALS (m)		800 / 1600 / NIL					
CIRCLING	MDA / (OCH)	NA					
	VIS (m)						