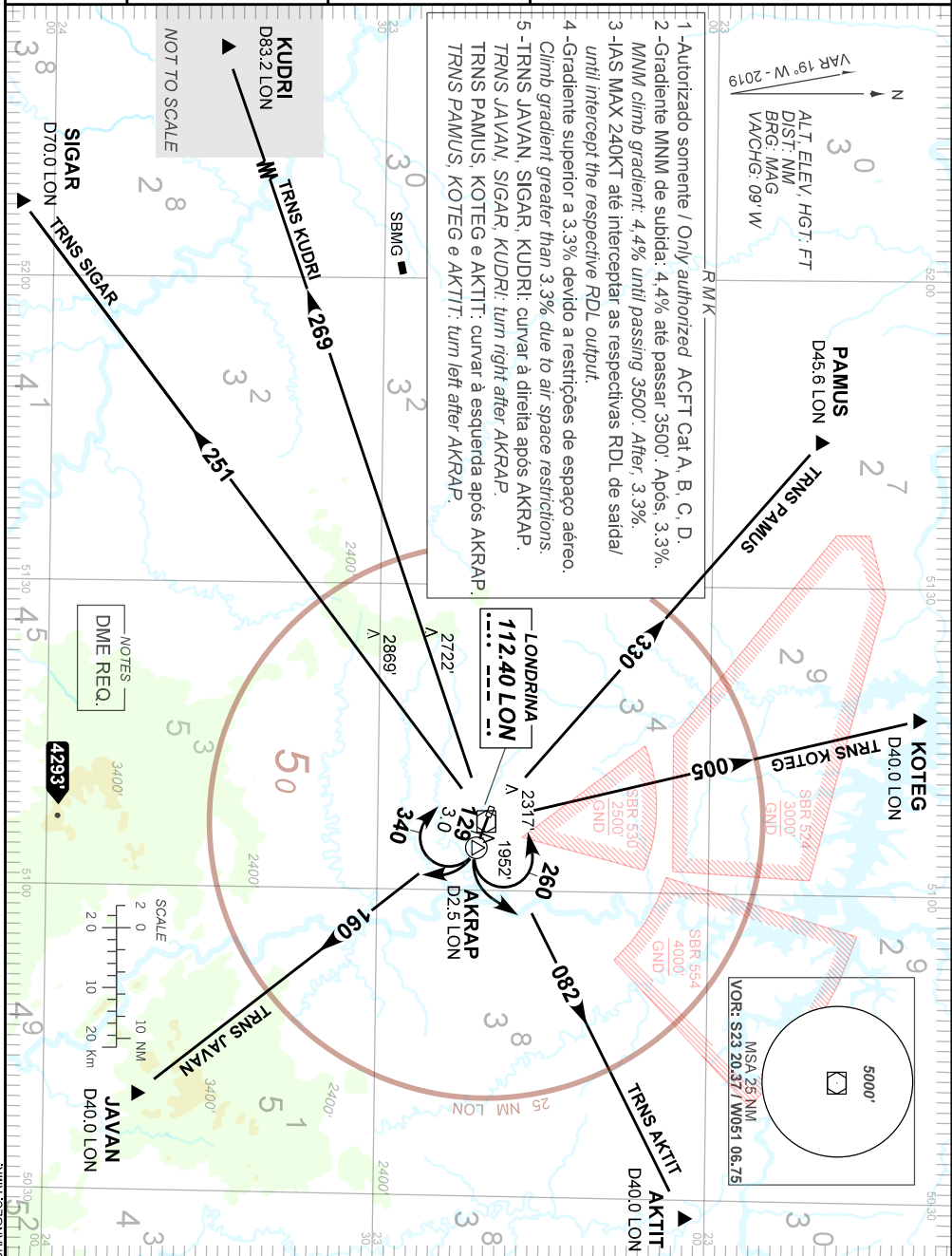


AD ELEV: 1866'

TA 5000'	TWR LONDRINA 118.40	APP LONDRINA 129.70	ACC CURITIBA 124.275 124.90 125.075 125.80 127.20 133.50 135.10 133.80 121.50
----------	------------------------	------------------------	---



1 - Autorizado somente / Only authorized ACFT Cat A, B, C, D.
 2 - Gradiente MNM de subida: 4,4% até passar 3500'. Após, 3,3%.
 MNM climb gradient: 4,4% until passing 3500'. After, 3,3%.
 3 - IAS MAX 240KT até interceptar as respectivas RDL de saída/
 until intercept the respective RDL output.
 4 - Gradiente superior a 3,3% devido a restrições de espaço aéreo.
 Climb gradient greater than 3,3% due to air space restrictions.
 5 - TRANS JAVAN, SIGAR, KUDRI: curvar à direita após AKRAP.
 TRANS PAMUS, KOTEG e AKTIT: curvar à esquerda após AKRAP.
 TRANS PAMUS, KOTEG e AKTIT: turn right after AKRAP.
 TRANS PAMUS, KOTEG e AKTIT: turn left after AKRAP.

VAR 19° W - 2019
 N
 ALT ELEV, HGT: FT
 DST: NM
 BRG: MAG
 VA/CHG: 09 W

NOTES
 DIME REQ.

SCALE
 2 0
 10 NM
 20 km
 D40.0 LON
 JAVAN

5000'
 MSA 25 NM
 VOR: 523 20.37 / W051 08.75

CHANGES: RMK