

INSTRUMENT APPROACH
CHART (IAC)

SÃO PAULO / Congonhas, INTL (SBSP)

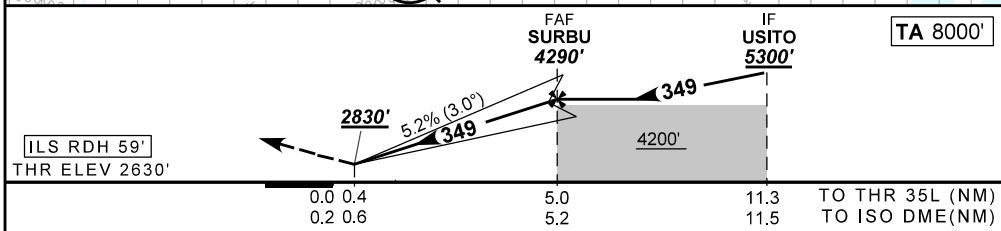
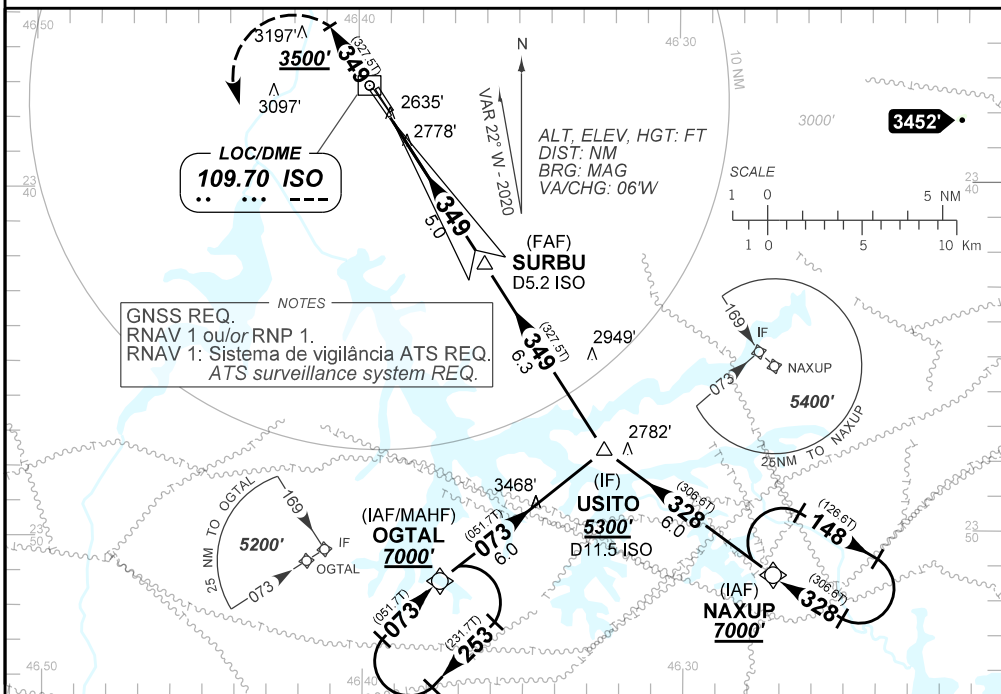
AD ELEV: 2631'

ILS Z RWY 35L

D-ATIS 127.65	APP SÃO PAULO 133.85 119.05 134.90 119.80 129.00 119.60 122.75 121.50	TWR SÃO PAULO 118.05 127.15 121.50	GNDC SÃO PAULO 121.90
LOC ISO 109.70MHz	FINAL CRS 349°	FAF: 4290'	CAT I DA / (OCH): 2830' / (200')
			N/A

APCH Perdida: Subir para **6000'**, gradiente MNM de 4%. Manter rumo **349°** até **3500'**. Após, curvar à ESQUERDA direto OGTAL para espera.

Missed APCH: Climb to **6000'**, MNM climb gradient 4%. Maintain course **349°** until **3500'**. After, turn LEFT direct to OGTAL for holding.



RWY	NIL	KT	90	110	130	150	170	190
ALT	NIL	FPM	500	600	700	800	900	NA
(HGT)	NIL	FAF-MAPT	NA					

STRAIGHT-IN	CAT	A	B	C	D	E
CAT I	DA / (OCH)	2830' / (200')				NA
	ALS/NO ALS/ RVR ALS (m)	NIL / 1200 / NIL				
CIRCLING		NA				

CHANGES: ILS, PROC.