

**INSTRUMENT APPROACH  
CHART (IAC)**

**NAVEGANTES / Ministro Victor Konder, INTL (SBNF)**

**AD ELEV: 18'**

**NDB Z RWY25**

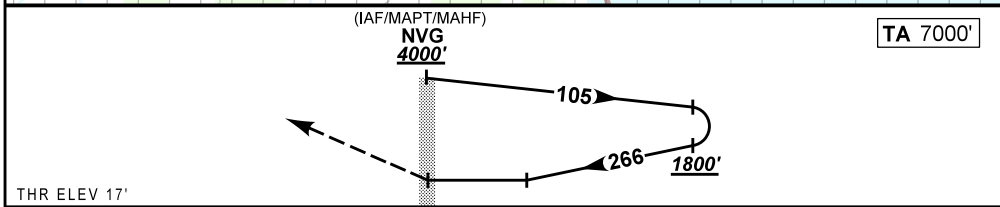
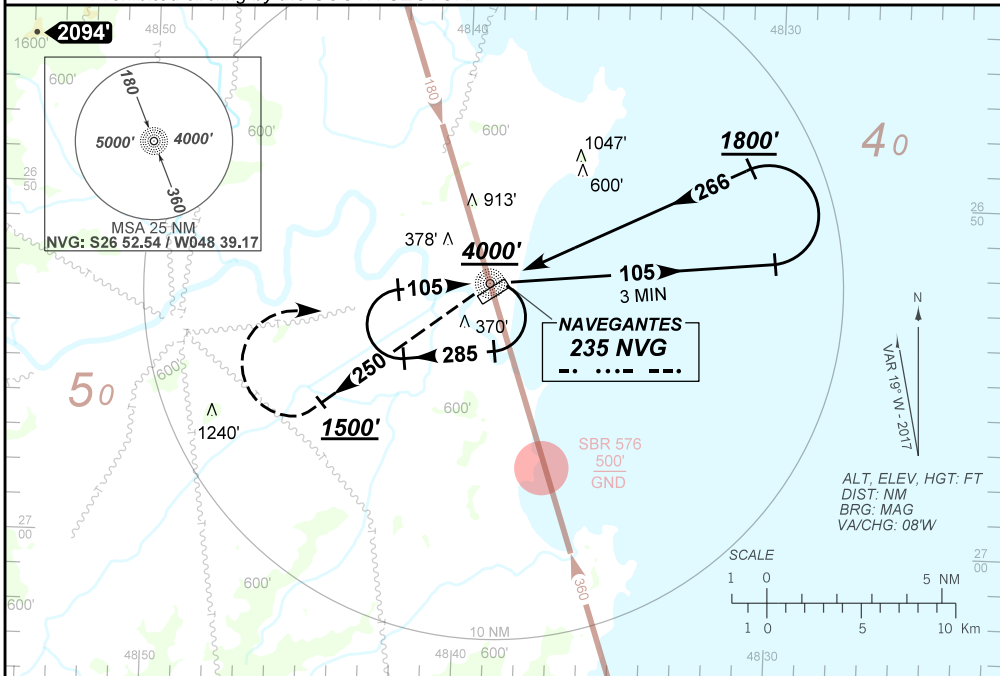
ATIS <b>127.625</b>	APP FLORIANÓPOLIS <b>119.50 119.65 128.95 129.45 129.60 121.50</b>	TWR NAVEGANTES <b>118.20</b>	GNDC <b>NIL</b>
------------------------	---	---------------------------------	--------------------

NDB NVG <b>235 KHz</b>	FINAL CRS <b>266°</b>	<b>N/A</b>	<b>N/A</b>	NDB MDA / (OCH): <b>610' (600')</b>
---------------------------	--------------------------	------------	------------	--

APCH Perdida: 1) Subir para **4000'**. Manter o QDR **250** do NDB NVG até cruzar **1500'**. Então, curvar à DIREITA direto NDB NVG para espera. 2) IAS MAX 220KT.

Missed Approach: 1) Climb to **4000'**. Maintain **250** QDR NVG NDB until passing **1500'**. Then, turn RIGHT direct to NVG NDB for holding. 2) MAX IAS 220KT.

RMK: 1) Proibido circular pelo SETOR SUL.  
*Prohibited circling by the SOUTH SECTOR.*



RWY25	NIL	KT	090	110	130	150	170	190
ALT	NIL	FPM	600					
(HGT)	NIL	FAF-MAPT	NA					

STRAIGHT-IN	CAT	A	B	C	D	E
NDB	MDA / OCH / TETO ALS/NO ALS/RVR ALS (m)		610' / (600') / 600'			NA
		NIL / 1600 / NIL	NIL / 2700 / NIL			
CIRCLING	MDA / OCH / TETO VIS (m)	630' / (620') / 700' 1600	1210' / (1200') / 1200' 2400	1400' / (1390') / 1400' 4800		NA

CHANGES: NEW CHART.

AIRAC AMDT 18/17 12 OCT 17

DEPARTAMENTO DE CONTROLE DO ESPAÇO AÉREO

SBNF\_IAC\_00H 1  
IAC NDB Z RWY 25