

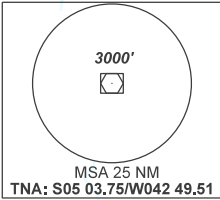
STANDARD DEPARTURE CHART
INSTRUMENT (SID)

TERESINA/ Senador Petrônio Portella (SBTE)

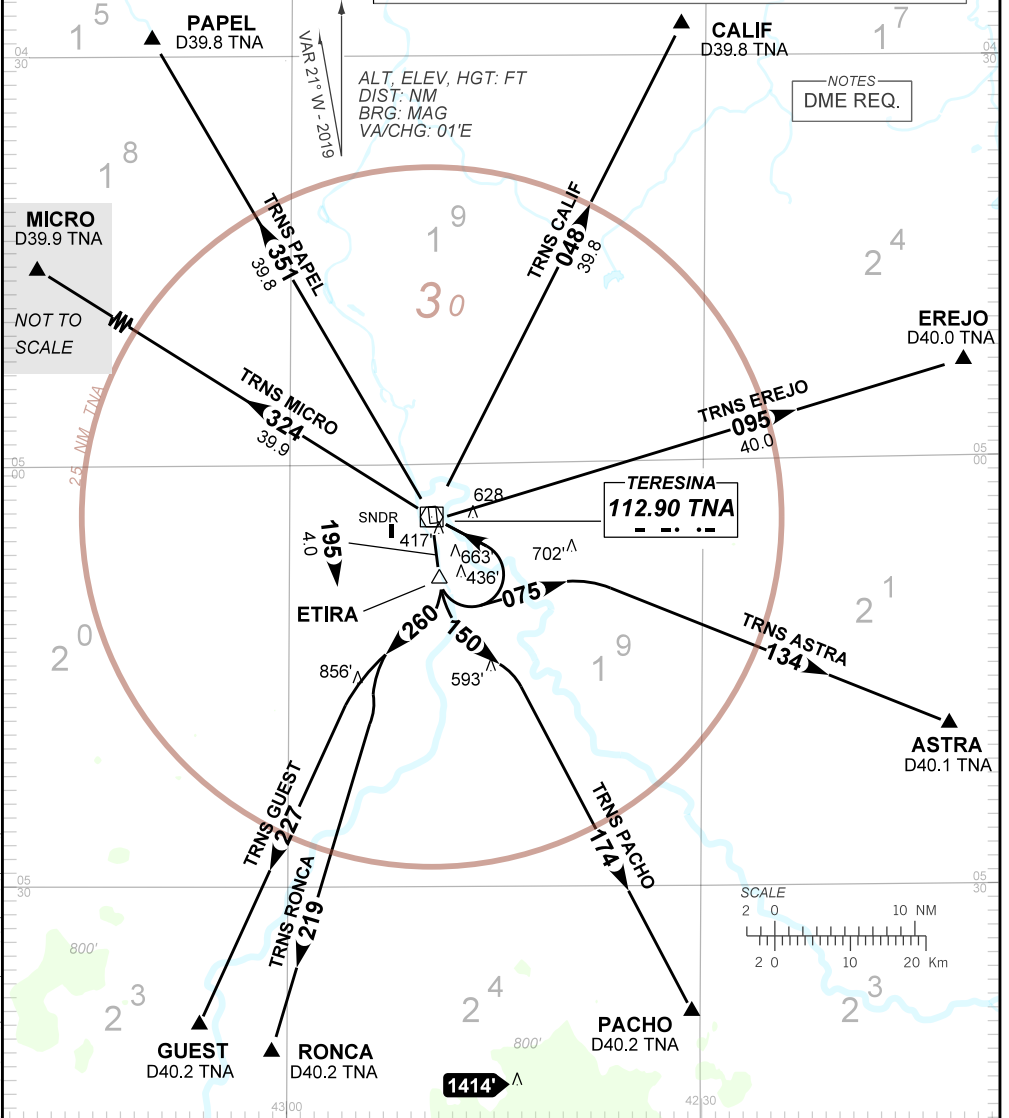
RWY 20
ETIRA 1C

AD ELEV: 220'

TA 4000'	TWR TERESINA 118.80	APP TERESINA 119.60	ACC RECIFE 125.15 135.25 121.50
----------	------------------------	------------------------	------------------------------------



- 1 - Autorizado somente / Only authorized ACFT Cat. A, B, C, D.
- 2 - Gradiente MNM de subida: 4.7% até ETIRA. Após, 3.3%.
MNM climb gradient: 4.7% up to ETIRA. After, 3.3%.
- 3 - IAS MAX 230KT até VOR TNA/ up to TNA VOR.
- 4 - INFO complementares no verso.
See reverse side for additional INFO.



CHANGES: DEC. IDENT. LAYOUT. PROC. FREQ.

— R M K —

5 - Obstáculos próximos não considerados para cálculo do gradiente do procedimento (PDG):

Close-in obstacles not considered for procedure gradient (PDG):

- poste/pole: a partir de/ from THR 02, AZM 216, DIST 115M, ELEV 239'.
- muro/wall: a partir de/ from THR 02, AZM 194, DIST 135M, ELEV 226'.
- prédio/building: a partir de/ from THR 02, AZM 142, DIST 213M, ELEV 255'.
- torre/tower: a partir de/ from THR 02, AZM 177, DIST 1503, ELEV 416'.