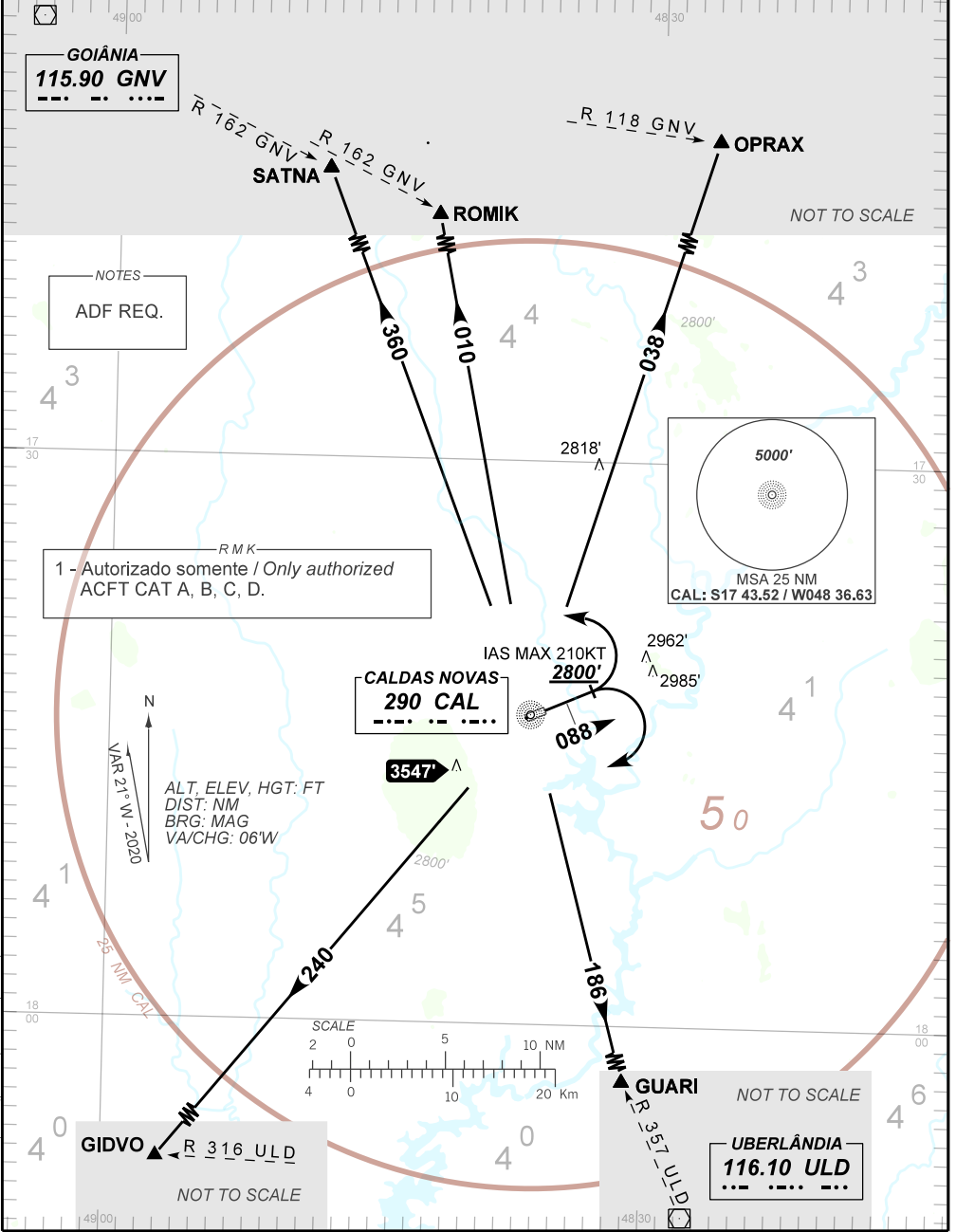


STANDARD DEPARTURE CHART  
INSTRUMENT (SID)

CALDAS NOVAS / Caldas Novas (SBCN)  
RWY 09  
GIDVO 1B - GUARI 2B - OPRAX 2B  
ROMIK 2B - SATNA 2B RWY 09

AD ELEV: 2300'

TA 6000'	AFIS CALDAS NOVAS 130.05	APP UBERLÂNDIA 122.85	APP ANÁPOLIS 119.15 120.55 129.45 133.00 121.50	ACC BRASÍLIA 123.75 125.05 128.30 133.75 121.50
----------	-----------------------------	--------------------------	---	---



CHANGES: DEC. FREQ. IDENT. LAYOUT. PROC. RMK