

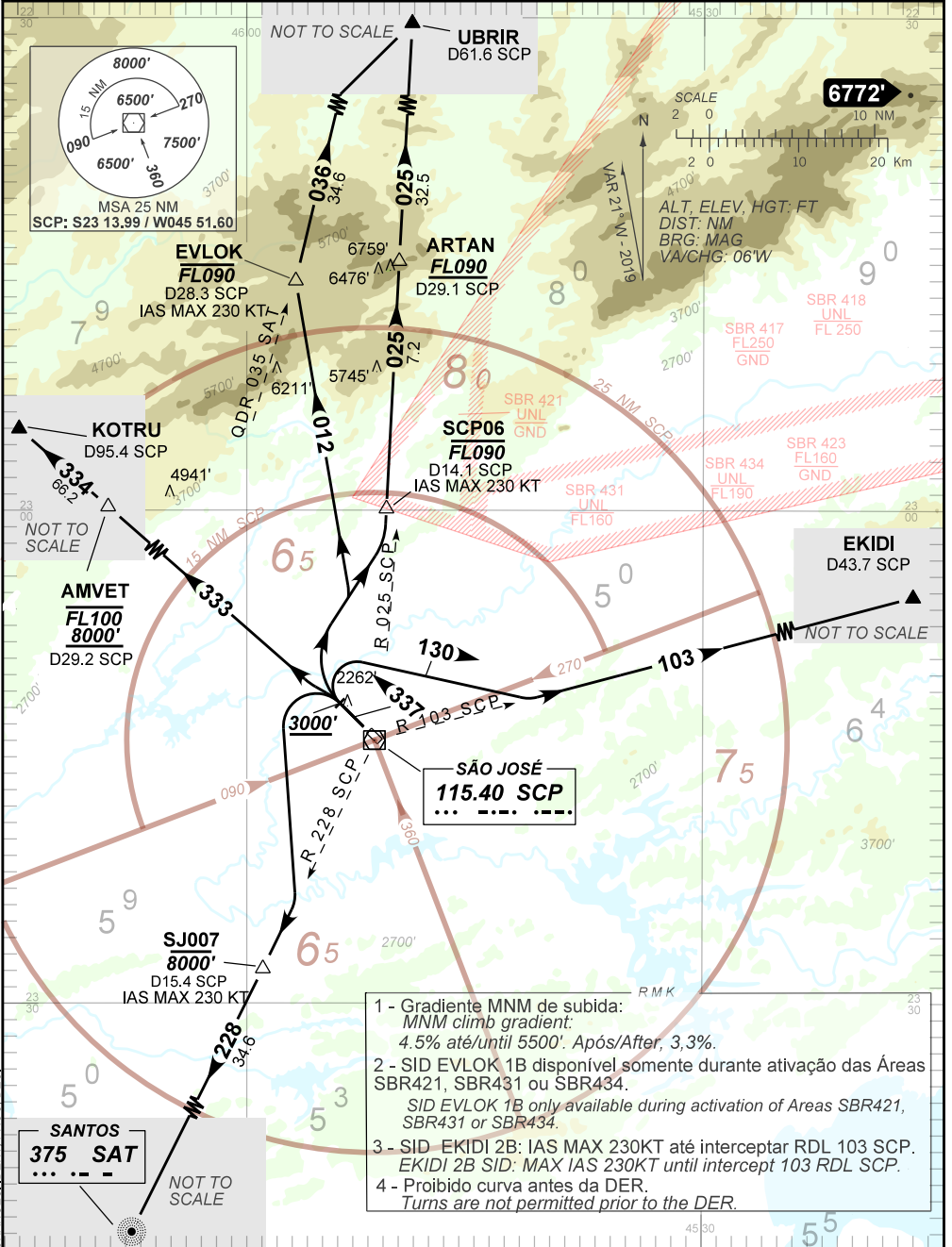
STANDARD DEPARTURE CHART SÃO JOSÉ DOS CAMPOS / Prof. Urbano Ernesto Stumpf (SBSJ)
INSTRUMENT (SID)

RWY 33

AD ELEV: 2123'

EVLOK 2B - KOTRU 2B - SAT 2B - EKIDI 2B - UBRIR 2B

| TA 8000' | TWR SÃO JOSÉ | APP RIO | APP SÃO PAULO | ACC BRASÍLIA | ACC CURITIBA |
|----------|---------------|--|--------------------------------|--|---------------------------------------|
| | 118.50 121.50 | 119.00 119.35 120.55 128.90 129.20 121.50 | 124.15 125.60 134.15 121.50 | 126.15 127.25 128.50 126.80 134.00 121.50 | 124.00 125.40 126.50 128.40 121.50 |



- 1 - Gradiente MNM de subida:
MNM climb gradient:
4.5% até/until 5500'. Após/After, 3.3%.
- 2 - SID EVLOK 1B disponível somente durante ativação das Áreas SBR421, SBR431 ou SBR434.
SID EVLOK 1B only available during activation of Areas SBR421, SBR431 or SBR434.
- 3 - SID EKIDI 2B: IAS MAX 230KT até interceptar RDL 103 SCP.
EKIDI 2B SID: MAX IAS 230KT until intercept 103 RDL SCP.
- 4 - Proibido curva antes da DER.
Turns are not permitted prior to the DER.

CHANGES IDENT. PROC. DEC.