

**INSTRUMENT APPROACH
CHART (IAC)**

RIO DE JANEIRO / Galeão - Antônio Carlos Jobim, INTL (SBGL)

VOR RWY 28

AD ELEV: 28'

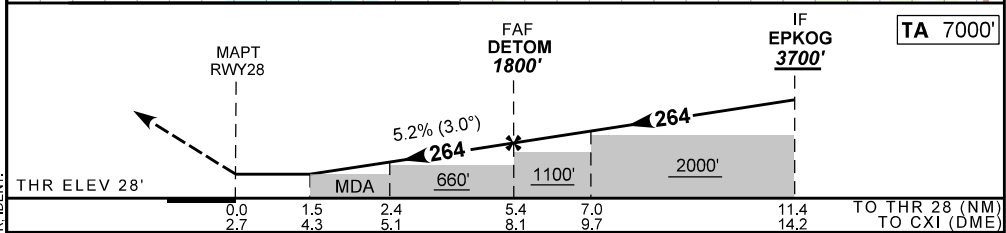
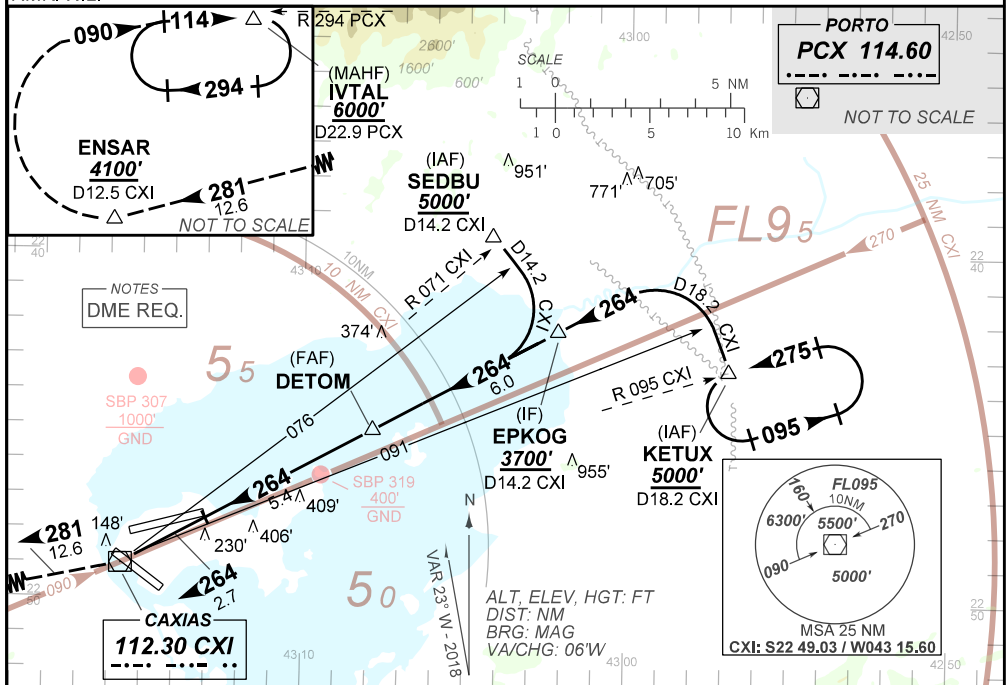
D-ATIS 127.60	APP RIO 126.20 133.30 134.40 121.25 129.80 125.95 128.90 119.35 121.50	TWR GALEÃO 118.00 118.20 121.50	GNDC GALEÃO 121.65 128.35
-------------------------	--------------------------------------------------------------------------------------------	-------------------------------------------	-------------------------------------

VOR CXI 112.30 MHz	FINAL CRS 264°	FAF 1800'	N/A	VOR MDA / (OCH): 570' / (550')
------------------------------	--------------------------	---------------------	-----	------------------------------------------

APCH Perdida: 1) Subir para **6000'**, gradiente MNM 5%. Manter rumo **264** até VOR CXI. Após, curvar à DIREITA RDL 281 VOR CXI até ENSAR. Curvar à DIREITA, proa **090** até interceptar e manter RDL 294 VOR PCX para espera em IVTAL.

Missed APCH: 1) Climb to **6000'**, MNM gradient of 5%. Maintain course **264** until CXI VOR. Turn RIGHT, 281 CXI RDL up to ENSAR. Then, turn RIGHT, heading **090** until intercepting and maintaining 294 PCX RDL for holding at IVTAL.

RMK: NIL.



RWY 28	1.5	2.0	3.0	4.0	DETOM		KT	090	110	130	150	170	190
ALT	570	715	1033	1352	1800		FPM	500	600	700	800	900	1000
(HGT)	542	687	1005	1324	1772		FAF-MAPT 5.4NM	3:35	2:56	2:29	2:09	1:54	1:42

STRAIGHT-IN	CAT	A	B	C	D	E
VOR/DME	MDA / (OCH)	570' / (550')				
	ALS/NO ALS/ RVR ALS (m)	750 / 1600 / 700	800 / 1600 / 700	1800 / 2500 / 1700		
CIRCLING	MDA / (OCH)	NA				
	VIS (m)					

CHANGES: EAC LAYOUT, HDG, MA, RVR, IDENT.