

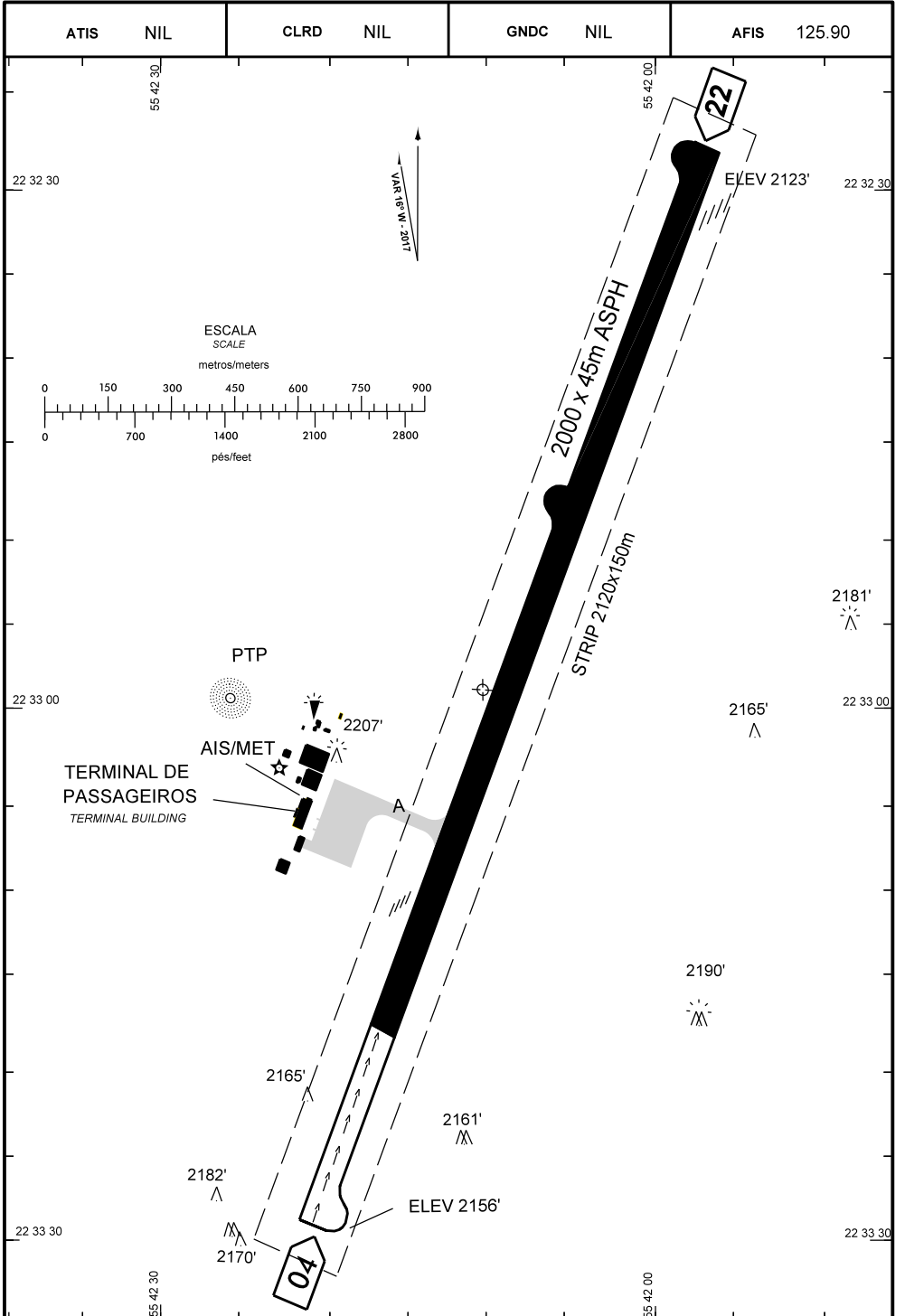
CARTA DE AERÓDROMO (ADC)
AERODROME CHART (ADC)

PONTA PORÃ / Ponta Porã, INTL (SBPP)

MS-BRASIL

ELEV 2156'

ARP S22 32 59 W055 42 11



MODIFICAÇÕES/CHANGES: BRG MAG, ELEV, LAYOUT, STRIP, VAR.

ADC – SBPP : INFORMAÇÕES COMPLEMENTARES/ COMPLEMENTARY INFORMATION

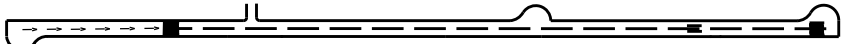
CARACTERÍSTICAS FÍSICAS / PHYSICAL CHARACTERISTICS												
PISTA RUNWAY				DIMENSÕES(m) DIMENSIONS(m)					PCN	TIPO DE SUPERFÍCIE SURFACE KIND		
RWY	BRG MAG	Tipo Type	RCD	RWY	SWY	CWY	RESA	STRIP	RWY	RWY	SWY	
a	b	c	d	e	f	g	h	i	j	k	l	
04	036	NPA	4	2000X45				2120	31/F/A/X/T	ASPH		
22	216	NPA	4					X 150				

DISTÂNCIAS DECLARADAS, AUXÍLIOS VISUAIS E COORDENADAS DAS CABECEIRAS
DECLARED DISTANCES, VISUAL AIDS AND THRESHOLD COORDINATES

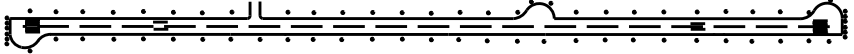
RWY	TORA(m)	ASDA(m)	TODA(m)	LDA(m)	AUXÍLIOS/AIDS	ALTURA GEOIDAL(m) GEOID HEIGHT(m)	COORDENADAS COORDINATES	
04	2000	2000	2000	1640	PAPI	8,27	S22 33 29	W055 42 21
22	1640	2000	1640	2000	PAPI	8,25	S22 32 28	W055 41 57

RWY 04 / 22

Sinalização horizontal / Marking Aids



Auxílios luminosos / Lighting Aids



RMK:

- 1) THR 04 RECUADA 360M
- 2) PAPI RWY 22: MEHT: 51.67'
- 3) PAPI RWY 22: MEHT 49FT HR SER 1115 - 2200 INSTL
- 4) PAPI RWY 04: MEHT 49FT HR SER 1115 - 2200 INSTL