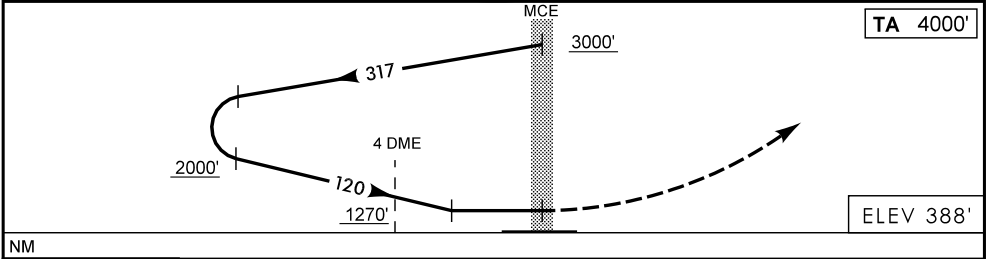
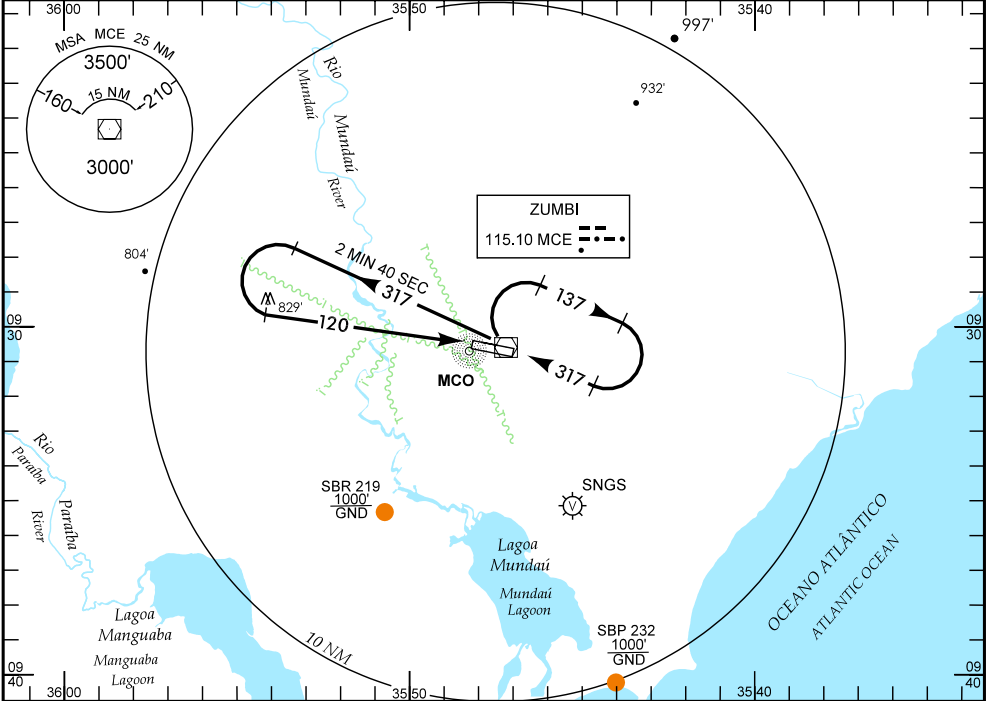


MACEIÓ / ZUMBI DOS PALMARES, INTL  
AL-BRASIL  
VOR/DME OU VOR Z RWY 12

IAC - SBMO

WGS-84

ATIS NIL	APP MACEIÓ 119.25 128.90	TWR MACEIÓ 118.00 118.25	GND NIL
-------------	-----------------------------	-----------------------------	------------



**APROXIMAÇÃO PERDIDA**  
MISSED APPROACH

SUBIR PARA 3000' NA RDL 120.  
CLIMB TO 3000' AT RDL 120.

**RMK:** 1) OBSERVAR ANTENA COM 525' DE ALTITUDE NA APROXIMAÇÃO FINAL A 2NM DA THR 12.  
1) BE ALERT FOR 525' ALTITUDE ANTENNA, AT THE FINAL APPROACH, 2NM FROM THR 12.

C	POUSO DIRETO RWY 12		STRAIGHT-IN TO RWY 12		IFR OPS		DIURNA / NOTURNA		PARA CIRCULAR				
	VOR		VOR/DME		DAY / NIGHT		DAY / NIGHT		TO CIRCLING				
A	MDA	TETO CEILING	MDA	TETO CEILING	MDA	TETO CEILING	MDA	TETO CEILING	CAT	MDA	TETO CEILING	VIS	VIS
A	1270'	900'	850'	500'	850'	500'	1270'	900'					
B									B				4400 M
C									C				4400 M
D									D				4800 M
E									E	1280'			4800 M

RAZÃO DE DESCIDA NA APROXIMAÇÃO FINAL						
RATE OF DESCENT ON FINAL APPROACH						
KT	90	110	130	140	160	180
FPM	700					

z:\aip-map\map\maceio-sbmo\mco\_loc\_vorame\_o\_vo\_l\_z\_rw12.dgn

DEPARTAMENTO DE CONTROLE DO ESPAÇO AÉREO - COMAER - BRASIL