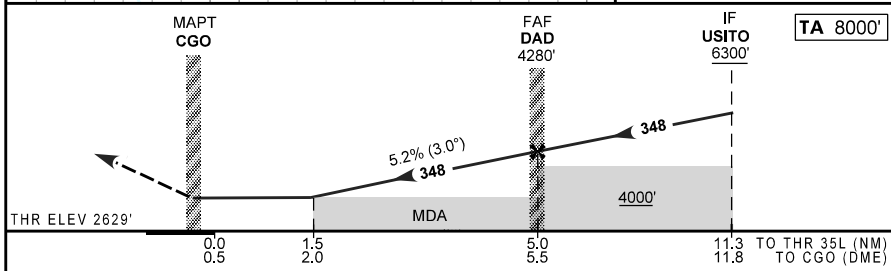
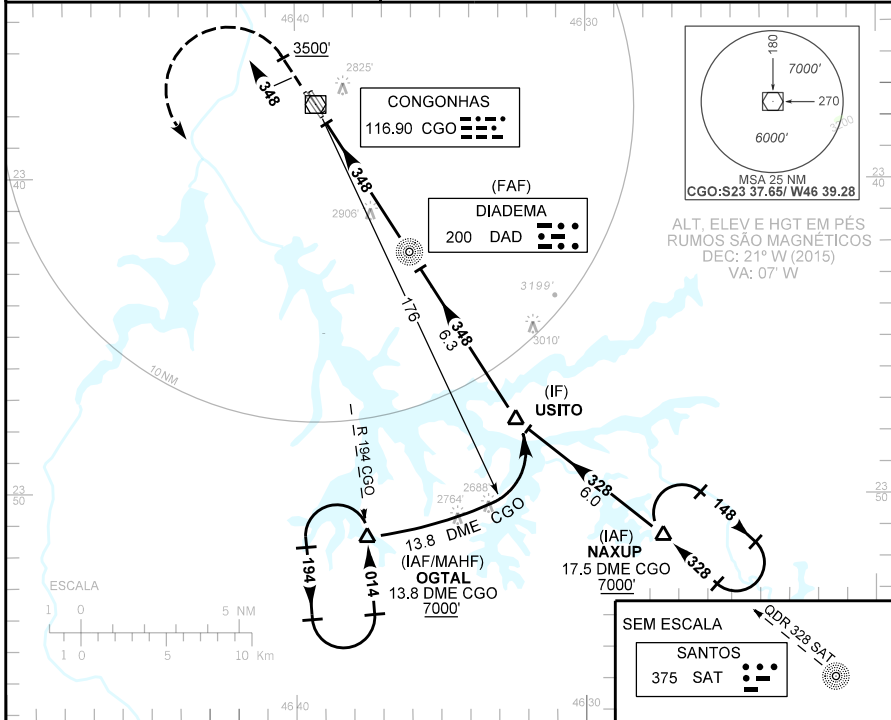


CARTA DE APROXIMAÇÃO
POR INSTRUMENTOS (IAC)
INSTRUMENT APPROACH CHART (IAC)

SÃO PAULO / Congonhas (SBSB)
VOR Z RWY 35L/35R

AD ELEV: 2631'	ATIS 127.65	APP SÃO PAULO 133.85 119.05 134.90 119.80 129.00 119.60 122.75 121.50	TWR SÃO PAULO 118.05 118.35 127.15	GNDC SÃO PAULO 121.90
RMK: NIL.		Aproximação Perdida: 1) Subir para 7000', gradiente MNM 4%. Manter rumo 348 até 3500'. Curvar à esquerda, RDL 194 CGO para espera em OGTAL. 2) IAS MAX 230Kt.		



RWY35L	1.5	2.0	3.0	4.0	DAD	KT	90	110	130	150	170	190
ALT	3160	3325	3643	3962	4280	FPM	500	600	700	800	900	NA
(HGT)	529	696	1014	1333	1651	FAF-MAPT	NIL					
POUSO DIRETO	CAT		A		B		C		D		E	
VOR	MDA / OCH / TETO		3160 / 530 / 600									NA
	ALS/NO ALS/RVR ALS (m)		NIL / 1600 / NIL				NIL / 2400 / NIL					
CIRCULAR	MDA / OCH / TETO		NA									
	VIS (m)											

MODIFICAÇÕES / CHANGES: PROC. FREQ.