

**INSTRUMENT APPROACH  
CHART (IAC)**

**SÃO PEDRO DA ALDEIA / São Pedro da Aldeia, MIL (SBES)**

**AD ELEV: 61'**

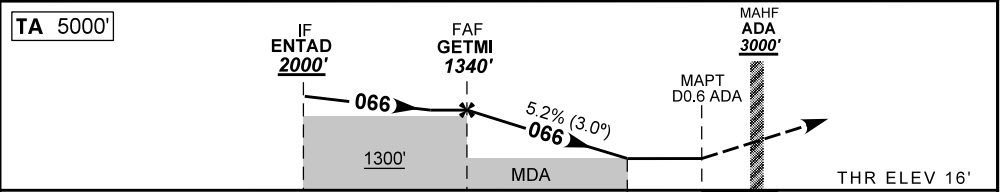
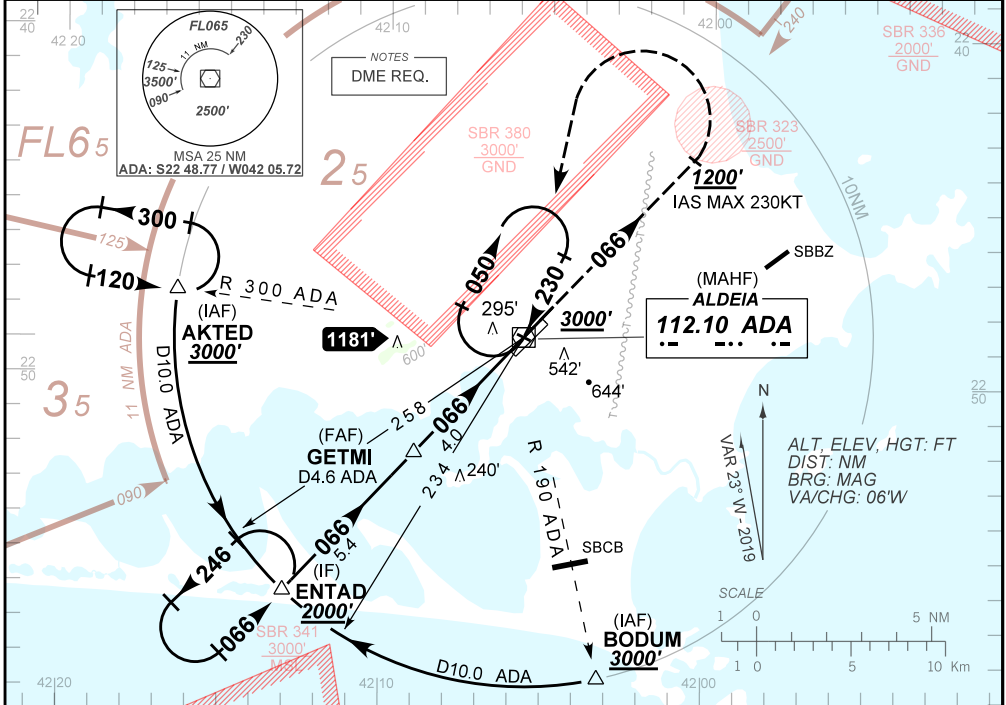
**VOR Z RWY 07**

ATIS NIL	APP ALDEIA 119.45 120.30	TWR ALDEIA 118.30 122.80 (MIL) 121.50	GNDCL ALDEIA 121.90
VOR/DME ADA 112.10 MHz	FINAL CRS 066°	FAF 1340'	N/A
VOR		MDA / (OCH): 470' / (460')	

APCH Perdida: Subir para **3000'**. Manter rumo **066°** até **1200'**, IAS MAX 230KT. Então, curvar à ESQUERDA direto VOR Aldeia para espera.

Missed APCH: Climb to **3000'**. Maintain course **066°** until passing **1200'**, IAS MAX 230KT. Then, turn LEFT direct to Aldeia VOR for holding.

RMK: Espera em / Holding over AKTED IAS MAX 230KT.



TO THR 07 (NM)	9.4	4.0	1.3	0.0
TO ADA (DME)	10.0	4.6	1.9	0.6

	GETMI	3.0	2.0	1.3	RWY07
	1340	1021	703	470	ALT
	1324	1005	687	460	(HGT)

	KT	090	110	130	150	170	190
	FPM	500	600	700	800	900	1000
	FAF-MAPT	NA					

CHANGES: NEW CHART.

STRAIGHT-IN	CAT	A	B	C	D	E
	MDA / (OCH)	470' / (460')				
VOR	ALS/NO ALS/ RVR ALS (m)	NIL / 1600 / NIL			NIL / 2100 / NIL	
		NA				
CIRCLING	MDA / (OCH)	NA				
	VIS (m)					