

INSTRUMENT APPROACH
CHART (IAC)

BRASÍLIA / Pres. Juscelino Kubitschek, INTL (SBBR)

RNAV(GNSS) X RWY 29L

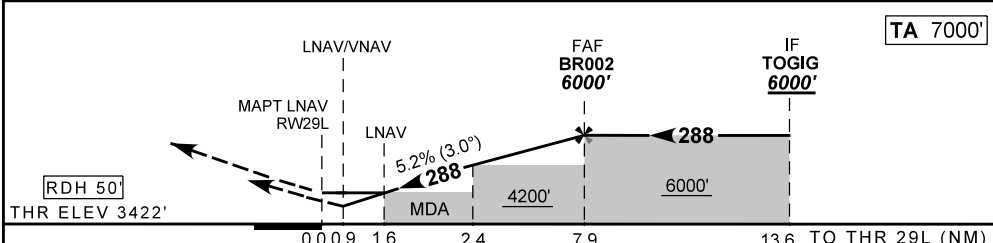
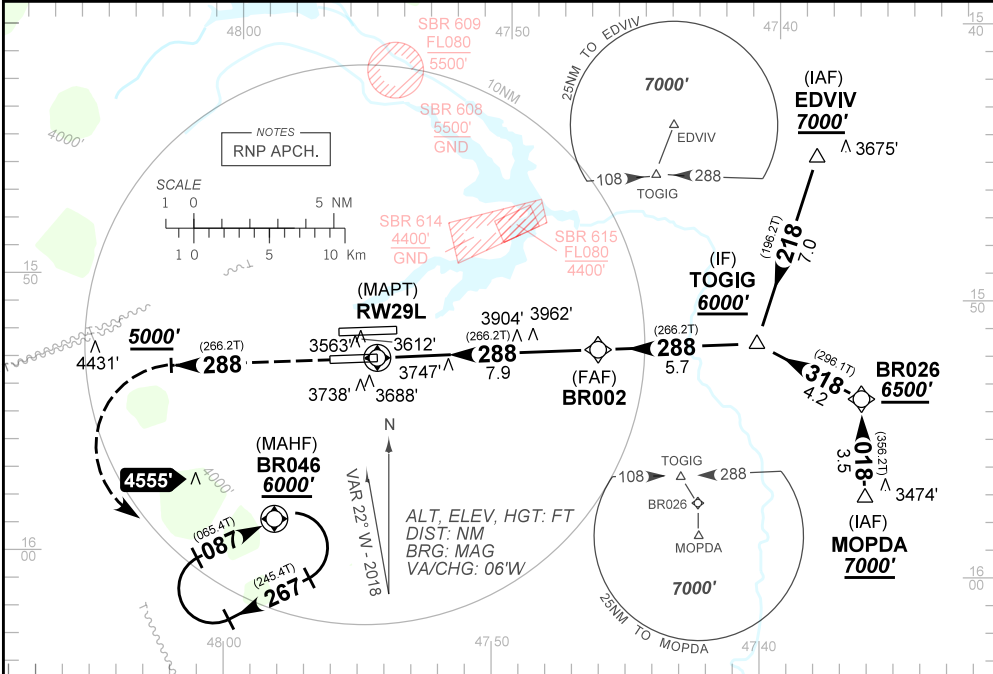
AD ELEV: 3497'

D-ATIS 127.80	APP BRASÍLIA 119.20 119.50 119.70 120.00 120.65 129.15 129.60 121.50	TWR BRASÍLIA 118.10 118.45 118.75 121.50	GNCD BRASÍLIA 121.80 121.95
N/A	FINAL CRS 288°	FAF 6000'	LNAV/VNAV DA / (OCH): REFER TO MNM
			LNAV MDA / (OCH): 3970' / (550')

APCH Perdida: 1) Subir para 6000'. Manter rumo 288 até cruzar 5000'. Então curvar à ESQUERDA direto BR046 para espera.

Missed APCH: 1) Climb to 6000'. Maintain course 288 until passing 5000'. Then, turn LEFT direct to BR046 for holding.

RMK: 1) Para sistemas não compensados Baro-VNAV, LNAV/VNAV NÃO AUTORIZADO abaixo de 0°C ou acima de 50°C.
1) For uncompensated systems Baro-VNAV, LNAV/VNAV NOT AUTHORIZED below 0°C or above 50°C.



RWY 29L	1.6	3.0	4.0	5.0	6.0	BR002	KT	090	110	130	150	170	190
ALT	3970	4430	4750	5064	5383	6000	FBM	500	600	700	800	900	NA
(HGT)	550	1008	1328	1642	1961	2578	FAF-MAPT	NA					

STRAIGHT-IN	CAT	A	B	C	D	E
LNAV/VNAV	DA / (OCH)	3697' / (275')	3712' / (290')	3732' / (310')	3759' / (337')	NA
	ALS/NO ALS/ RVR ALS (m)	800 / 1600 / NIL				
LNAV	MDA / (OCH)	3970' / (550')				
	ALS/NO ALS/ RVR ALS (m)	800 / 1600 / NIL		1400 / 2500 / NIL		
CIRCLING	MDA / (OCH)	NA				
	VIS (m)					

CHANGES: NEW CHART