

STANDARD DEPARTURE CHART
INSTRUMENT (SID)

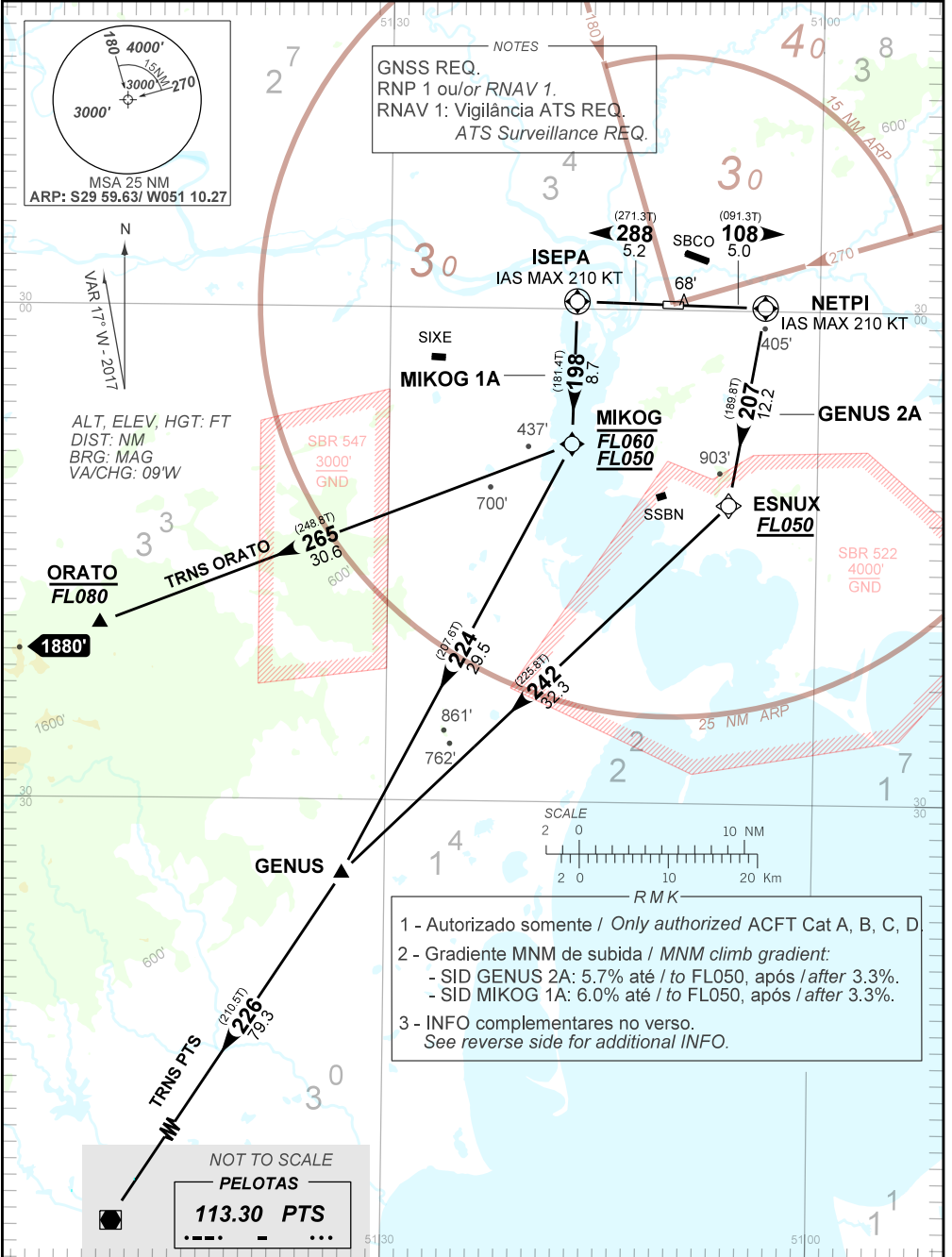
PORTO ALEGRE / Salgado Filho, INTL (SBPA)

RWY 11/29

AD ELEV: 12'

RNAV GENUS 2A - MIKOG 1A

TA 4000'	TWR PALEGRE 118.10 121.50	APP PALEGRE 119.00 120.10 120.55 128.90 121.50	ACC CURITIBA 126.75 127.40 121.50
----------	------------------------------	---	--------------------------------------



NOTES
GNSS REQ.
RNP 1 ou/ou RNAV 1.
RNAV 1: Vigilância ATS REQ.
ATS Surveillance REQ.

1 - Autorizado somente / Only authorized ACFT Cat A, B, C, D
2 - Gradiente MNM de subida / MNM climb gradient:
- SID GENUS 2A: 5.7% até / to FL050, após / after 3.3%.
- SID MIKOG 1A: 6.0% até / to FL050, após / after 3.3%.
3 - INFO complementares no verso.
See reverse side for additional INFO.

NOT TO SCALE
PELOTAS
113.30 PTS
- - - - -

CHANGES: RMK.

— RMK —

4 - Gradiente superior a 3.3% devido a restrição de espaço aéreo.

Climb gradient greater than 3.3% due to air space restrictions only.

5 - Obstáculos próximos não considerados para o cálculo do gradiente de subida (PDG):

Close-in obstacles not taken into account on climb gradient calculation (PDG):

DEP RWY 11: Árvores / *Trees* : a partir de / *from* THR29, AZM 160, DIST 150m, ELEV 68'.