

INSTRUMENT APPROACH CHART (IAC)

GUARANTÁ DO NORTE / Campo de Provas Brigadeiro Veloso, MIL (SBCC)

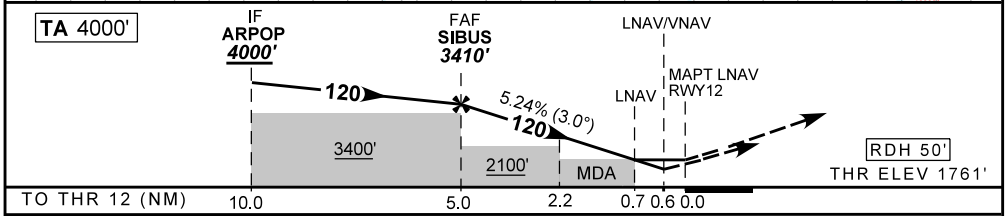
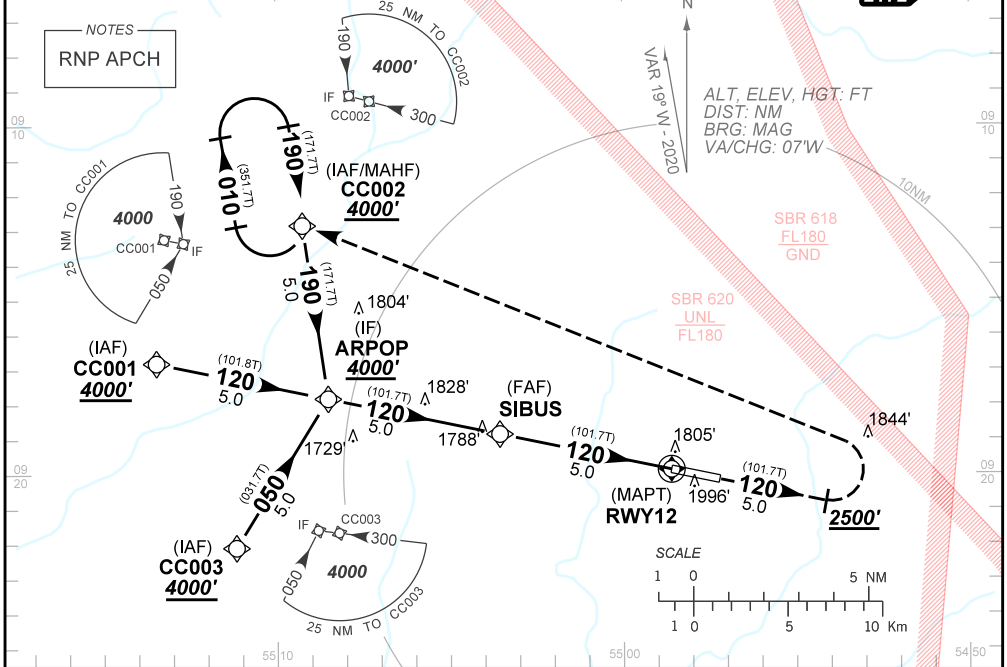
AD ELEV: 1777'

IAC RNAV(GNSS) Y RWY 12

ATIS NIL	APP NIL	AFIS CACHIMBO 125.90		GNDC NIL
N/A	FINAL CRS 120°	FAF: 3410'	LNAV/VNAV DA / (OCH): 2011' / (250')	LNAV MDA / (OCH): 2040' / (280')

APCH Perdida: Subir para **4000'**. Manter rumo **120** até passar **2500'**. Após, curvar à ESQUERDA direto para CC002 para espera.
 Missed APCH: Climb to **4000'**. Maintain course **120** until passing **2500'**. After, turn LEFT direct to CC002 for holding.

RMK: Para sistemas não compensados BARO-VNAV, LNAV/VNAV NÃO AUTORIZADO abaixo de -20°C ou acima de 50°C.
 For uncompensated systems BARO-VNAV, LNAV/VNAV NOT AUTHORIZED below -20°C or above 50°C.



TO THR 12 (NM)	10.0	5.0	2.2	0.7	0.6	0.0
SIBUS	4.0	3.0	2.0	1.0	0.7	RWY12
3410	3085	2765	2450	2130	2040	ALT
1649	1324	1004	689	369	280	(HGT)
KT	090	110	130	150	170	190
FPM	500	600	700	800	900	1000
FAF-MAPT	NA					

STRAIGHT-IN	CAT	A	B	C	D	E
	DA / (OCH)	2011' / (250')				
LNAV/VNAV	ALS/NO ALS/ RVR ALS (m)	NIL / 1600 / NIL				
	MDA / (OCH)	2040' / (280')				
LNAV	ALS/NO ALS/RVR ALS (m)	NIL / 1600 / NIL				
	MDA / (OCH)	NA				
CIRCLING	VIS (m)	NA				

CHANGES: NEW CHART

AMDT 2006C 21 MAY 20

DEPARTAMENTO DE CONTROLE DO ESPAÇO AÉREO

SBCC_IAC_00N 1/1
IAC RNAV(GNSS) Y RWY 12