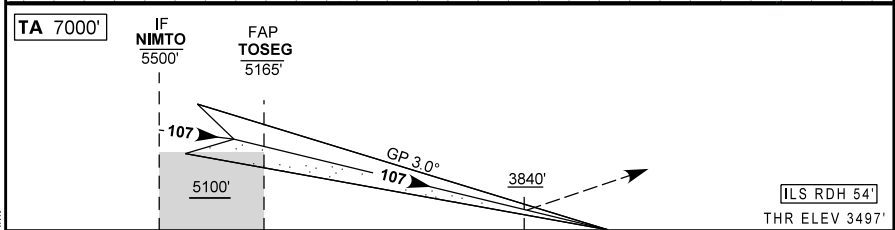
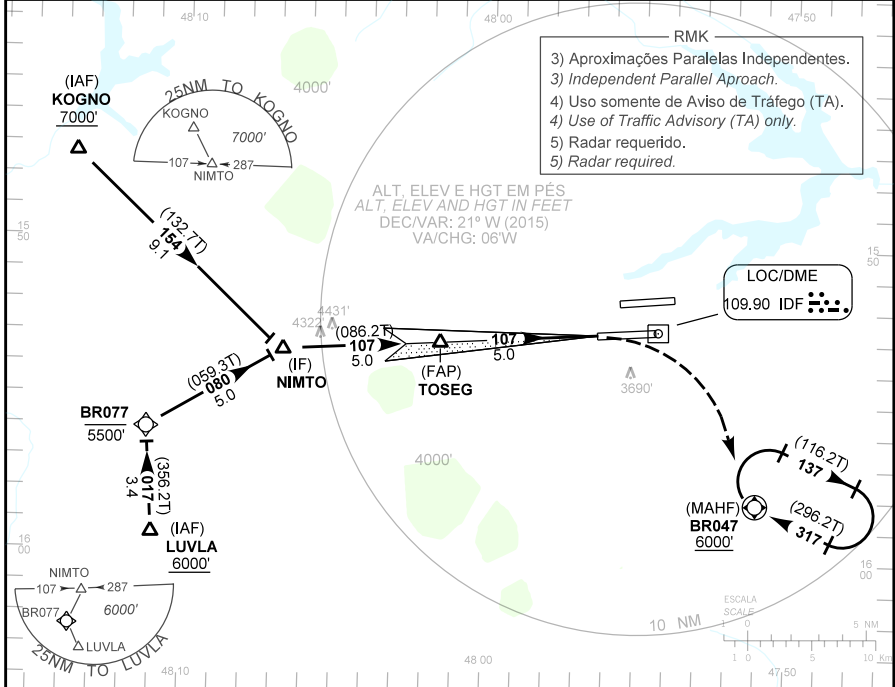


CARTA DE APROXIMAÇÃO  
POR INSTRUMENTOS (IAC)  
INSTRUMENT APPROACH CHART (IAC)

BRASÍLIA / Pres. Juscelino Kubitschek, INTL (SBBR)

ILS Z RWY 11R

AD ELEV: 3497'	ATIS 127.80	APP BRASÍLIA 119.20 119.50 119.70 120.00 129.60 121.50	TWR BRASÍLIA 118.10 118.45 121.50	GNDC BRASÍLIA 121.80
RMK: 1) Observar compulsoriamente seção CAR da AIP-MAP. RMK: 1) CAR section of AIP-MAP shall be observed. 2) RNAV 1 ou RNP 1. 2) RNAV 1 or RNP 1.			Aproximação Perdida: Curvar à direita e subir para 6000', gradiente de 5%, para espera em BR047. Missed Approach: Turn right and climb to 6000', 5% gradient, for holding at BR047.	



TO THR 11R (NM)		10.0	5.0	0.9	0.0								
TO IDF (DME)		11.9	6.9	2.8	1.9								
TOSEG	4.0	3.0	2.0	1.0	0.9	RW11R	KT	090	110	130	150	170	190
	5165	4839	4514	4191	3870	3840	FPM	500	600	700	800	900	1000
	1668	1342	1017	694	373	343	FAP-MAPT	NA					
POSO DIRETO STRAIGHT-IN	CAT		A	B	C	D	E						
	DA / OCH / TETO		3840 / 350 / 400										
CAT I	ALS/NO ALS/ RVR ALS (m)		900 / 1600 / 850										
	MDA / OCH / TETO		NA										
CIRCULAR TO CIRCLE	VIS (m)		NA										

MODIFICAÇÕES / CHANGES: CARTA NOVA, NEW CHART.