

**INSTRUMENT APPROACH  
CHART (IAC)**

**MACAÉ / Plataforma PETROBRÁS 20 P-20 (SBMM)**

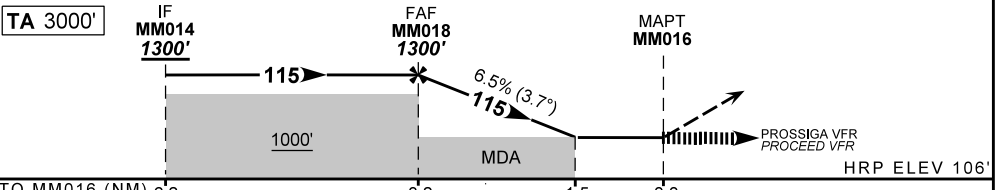
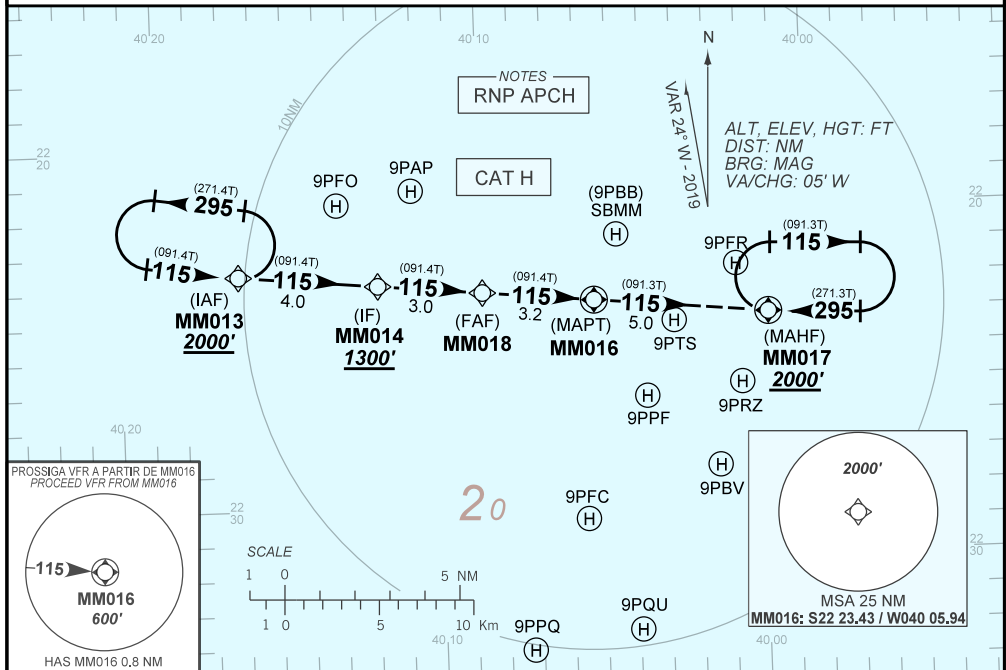
**HELPN ELEV: 106'**

**RNAV(GNSS) 115**

D-ATIS	APP MACAÉ 130.85 126.90 120.00 129.55 119.20 121.50			TWR NIL	GND NIL
N/A	FINAL CRS 115°	FAF: 1300'	N/A	LNAV MDA / (OCH): 600' / (500')	

APCH Perdida: Subir para **2000'** . Manter o rumo **115** para até MM017 para espera.  
Missed APCH: Climb to **2000'** . Maintain course **115** up to MM017 for holding.

RMK: 1) Procedimento poderá ser utilizado para helideques situados até 10NM de MM016. 2) Requerida autorização do APP-ME para início do procedimento. 3) Requerido FPL "Y" com mudança de regras de voo para VFR em MM016.  
1) Procedure may be authorized for helidecks situated within 10NM from MM016. 2) Authorization required from APP-ME to initiate the procedure. 3) FPL "Y" required with flight rules change to VFR at MM016.



	MM018	3.0	2.0	1.5	MM016	KT	060	070	080	090
	1300	1185	790	600	ALT	FPM	390	460	520	590
	1194	1079	684	500	(HGT)	FAF-MAPT	NA			

STRAIGHT-IN	CAT	H
	MDA / (OCH)	600' / (500')
LNAV	MDA / (OCH)	600' / (500')
	VIS (m)	1500
CIRCLING	MDA / (OCH)	NA
	VIS (m)	NA

CHANGES: FREQ. LAYOUT. VAR. WPT.

**INTENCIONALMENTE EM BRANCO**  
INTENTIONALLY LEFT BLANK