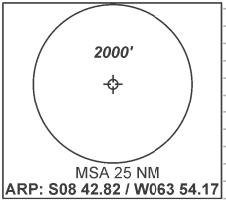


AD ELEV: 295'

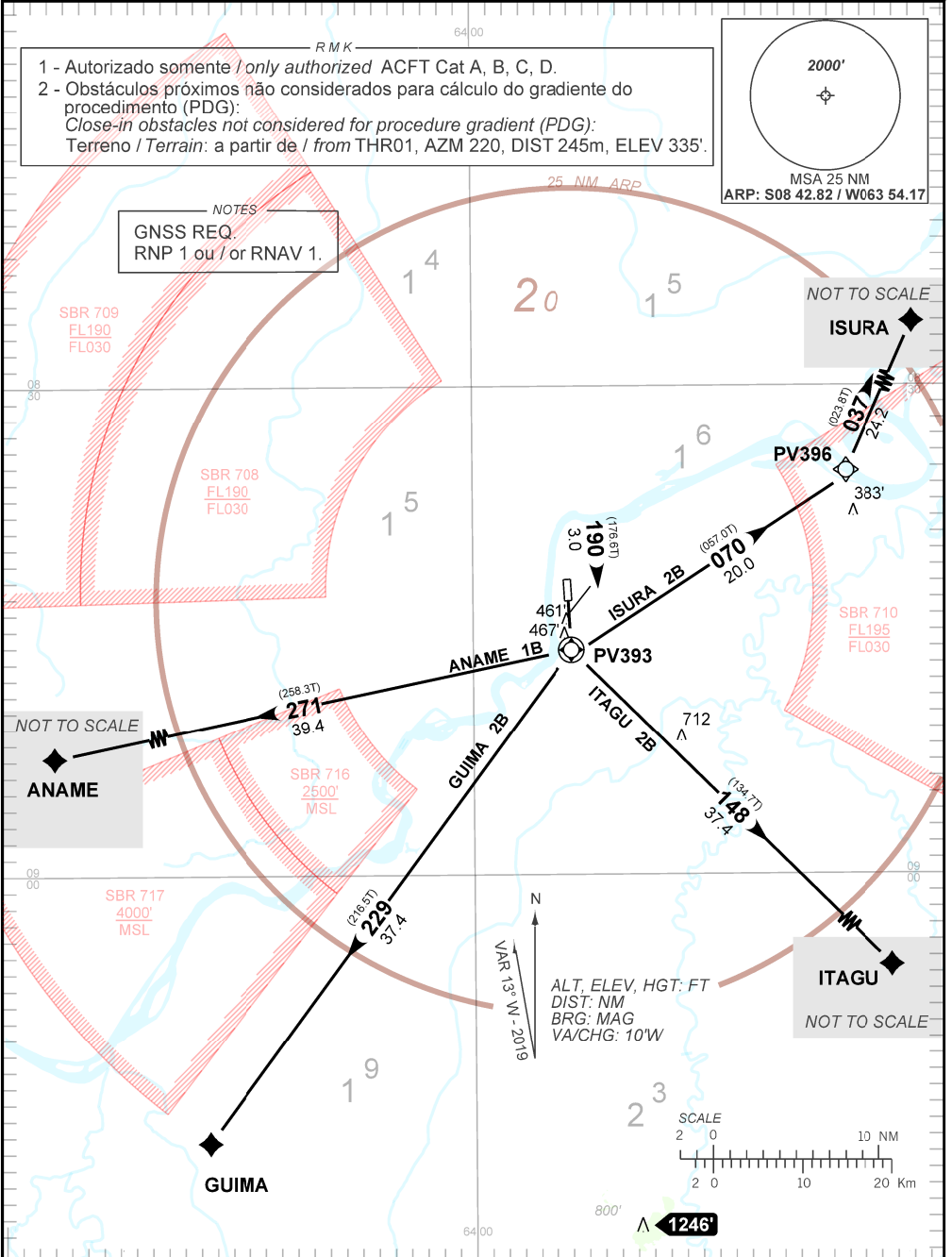
**RNAV ANAME 1B - GUIMA 2B - ISURA 2B - ITAGU 2B**

<b>TA 3000'</b>	<b>TWR PORTO VELHO</b> 118.20 121.50	<b>APP PORTO VELHO</b> 120.25 120.80	<b>ACC AMAZÔNICO</b> 125.85 128.30 126.50 135.25 121.50
-----------------	---	---	--

- 1 - Autorizado somente / only authorized ACFT Cat A, B, C, D.  
2 - Obstáculos próximos não considerados para cálculo do gradiente do procedimento (PDG):  
Close-in obstacles not considered for procedure gradient (PDG):  
Terreno / Terrain: a partir de / from THR01, AZM 220, DIST 245m, ELEV 335'.



NOTES  
GNSS REQ.  
RNP 1 ou / or RNAV 1.



CHANGES: WPT.