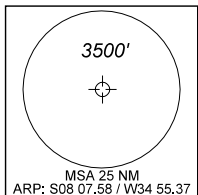
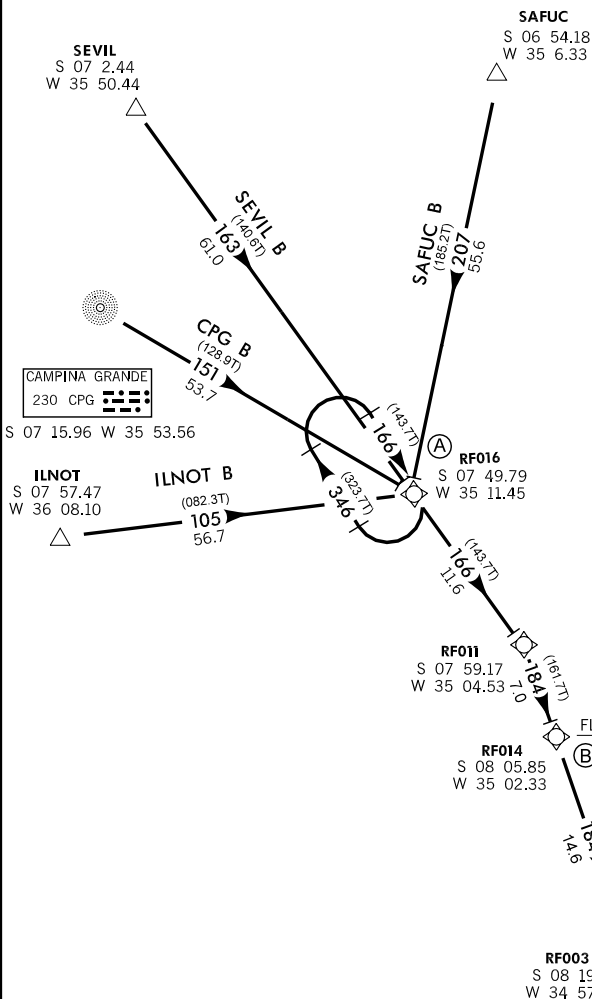


TA 4000'	ATIS 127.65	ACC RECIFE 128.05 135.80 121.50	APP RECIFE 119.50 119.95 129.60 121.50	TWR RECIFE 118.35 122.80 (MIL) 121.50
----------	----------------	------------------------------------	---	--



ALT. ELEV E HGT EM PÉS
 ALT. ELEV AND HGT IN FEET
 DEC/VAR: 22° W (2009)
 VA/CHG: 03° W

SEM
 ESCALA
 NO SCALE



QNH
 (Q) PONTO DE AJUSTE DE ALTÍMETRO
 ALTIMETER SETTING POINT
 ou conforme instruções do ATC
 or in accordance with ATC instructions.

RESTRICÕES DE VELOCIDADE
 SPEED RESTRICTIONS
 (A) IAS MAX 230 KT
 (B) IAS MAX 210 KT
 (C) IAS MAX 190 KT
 ou conforme instruções do ATC
 or in accordance with ATC instructions.

RMK
 Nota 1: RNAV 1
 Nota 2: B-RNP 1
 Nota 3: RADAR compulsório.
 RADAR required
 Nota 4: GNSS certificado requerido
 Certified GNSS required.
 Nota 5: Descrição textual no verso
 Textual description on reverse side

z:\map_isco\recife\sbrf\star_rnav_cpg_b.dgn

DEPARTAMENTO DE CONTROLE DO ESPAÇO AÉREO - COMAER - BRASIL

INSTRUÇÕES DE CHEGADA

I – CHEGADA CPG B:

APÓS NDB FLY-BY CAMPINA GRANDE VOAR (TF) NO RUMO 151 POR 53.7 NM PARA O WAYPOINT FLY-BY RF016. ENTÃO...

II – CHEGADA ILS NOT B:

APÓS INTERSEÇÃO FLY-BY ILS NOT VOAR (TF) NO RUMO 105 POR 56.7 NM, PARA O WAYPOINT FLY-BY RF016. ENTÃO...

III – CHEGADA SAFUC B:

APÓS INTERSEÇÃO FLY-BY SAFUC VOAR (TF) NO RUMO 207 POR 55.6 NM PARA O WAYPOINT FLY-BY RF016. ENTÃO...

IV – CHEGADA SEVIL B:

APÓS INTERSEÇÃO FLY-BY SEVIL VOAR (TF) NO RUMO 163 POR 61.0 NM PARA O WAYPOINT FLY-BY RF016. ENTÃO...

... INTERCEPTAR (TF) O RUMO 166 E VOAR POR 11.6 NM PARA WAYPOINT FLY-BY RF011. APÓS, INTERCEPTAR (TF) O RUMO 184 E VOAR POR 7.0 NM PARA WAYPOINT FLY-BY RF014. PASSAR O WAYPOINT FLY-BY RF014 NO FL070 OU ACIMA. APÓS, INTERCEPTAR (TF) O RUMO 184 E VOAR POR 14.6 NM PARA WAYPOINT FLY-BY RF003. PASSAR O WAYPOINT FLY-BY RF003 A 3500' OU ACIMA.

ARRIVAL INSTRUCTIONS

I – CPG B ARRIVAL:

AFTER CAMPINA GRANDE NDB FLY-BY, FLY (TF) ON COURSE 151 FOR 53.7 NM TO WAYPOINT FLY-BY RF016. THEN...

II – ILS NOT B ARRIVAL:

AFTER ILS NOT INTERSECTION FLY-BY, FLY (TF) ON COURSE 105 FOR 56.7 NM TO WAYPOINT FLY-BY RF016. THEN...

III – SAFUC B ARRIVAL:

AFTER SAFUC INTERSECTION FLY-BY, FLY (TF) ON COURSE 207 FOR 55.6 NM TO WAYPOINT FLY-BY RF016. THEN...

IV – SEVIL B ARRIVAL:

AFTER SEVIL INTERSECTION FLY-BY, FLY (TF) ON COURSE 163 FOR 61.0 NM TO WAYPOINT FLY-BY RF016. THEN...

... INTERCEPT (TF) ON COURSE 166 AND FLY FOR 11.6 NM TO WAYPOINT FLY-BY RF011. AFTER, INTERCEPT (TF) ON COURSE 184 AND FLY FOR 7.0 NM TO WAYPOINT FLY-BY RF014. CROSS WAYPOINT FLY-BY RF014 AT FL070 OR ABOVE. AFTER, INTERCEPT (TF) ON COURSE 184 AND FLY FOR 14.6 NM TO WAYPOINT FLY-BY RF003. CROSS WAYPOINT FLY-BY RF003 AT 3500' OR ABOVE.