

**INSTRUMENT APPROACH
CHART (IAC)**

CURITIBA / Afonso Pena, INTL (SBCT)

ILS W RWY 15

AD ELEV: 2989'

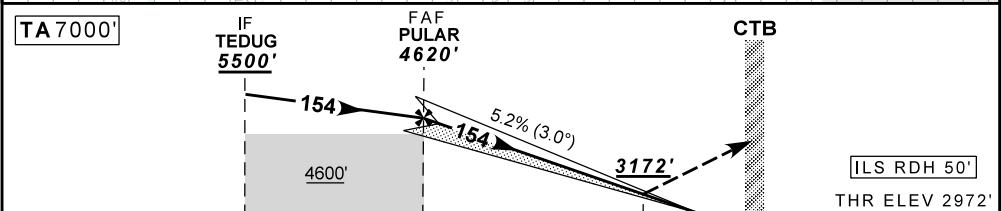
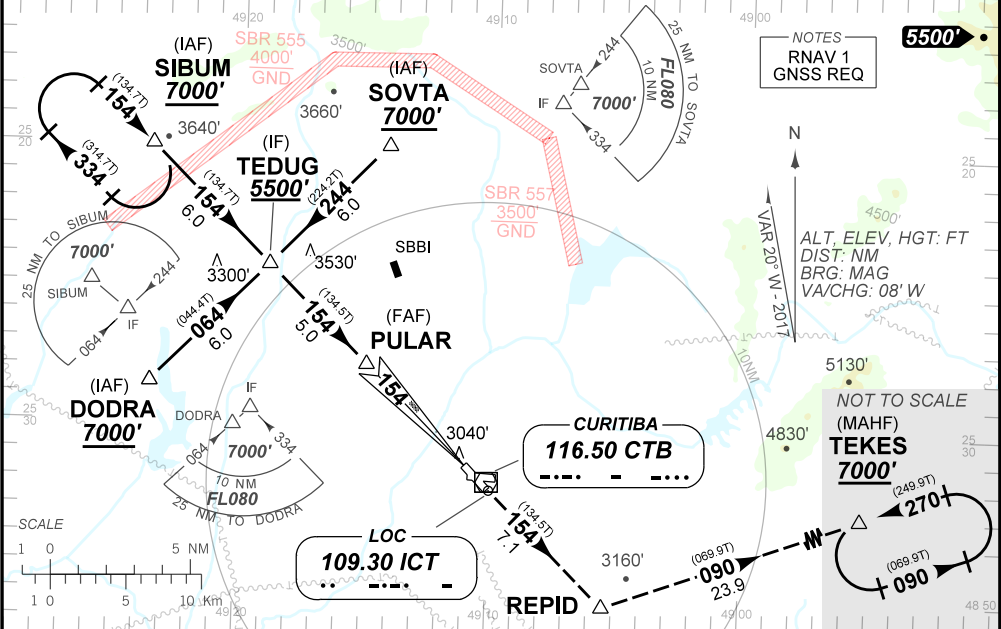
D-ATIS 127.80	APP CURITIBA 119.70 119.95 120.65 129.55 120.95 133.15 121.50				TWR CURITIBA 118.15 121.50	GND C CURITIBA 121.90
LOC ICT 109.30 MHz	FINAL CRS 154°	FAF: 4620'	CAT I DA / (OCH): 3172' / (200')		N/A	

APCH Perdida: Subir para **7000'**. Manter rumo **154** até REPID. Curvar à ESQUERDA rumo **090** para espera em TEKES.

Missed APCH: Climb to **7000'**. Maintain course **154** until REPID. Turn LEFT course **090** for holding at TEKES.

RMK: 1) (*) VIS RVR ALS 550m para aproximação utilizando Diretor de Voo, Piloto Automático ou Head-Up Display (HUD).

(*) VIS RVR ALS 550m for approach using a Flight Director, Autopilot or Head-Up Display (HUD).



TO THR 15 (NM)	10.0	5.0	0.5	0.0
TO CTB (DME)	11.0	6.0	1.5	1.0

NIL	RWY15	KT	NIL
NIL	ALT	FPM	NIL
NIL	(HGT)	FAF-MAPT 5.0NM	NIL

STRAIGHT-IN	CAT	A	B	C	D	E
CAT I	DA / (OCH)	3172' / (200')				NA
	ALS/NO ALS/ RVR ALS (m)	800 / 1200 / 700(*)				
CIRCLING	MDA / (OCH)	NA				
	VIS (m)	NA				

CHANGES: PROC. RMK.