

STANDARD DEPARTURE CHART
INSTRUMENT (SID)

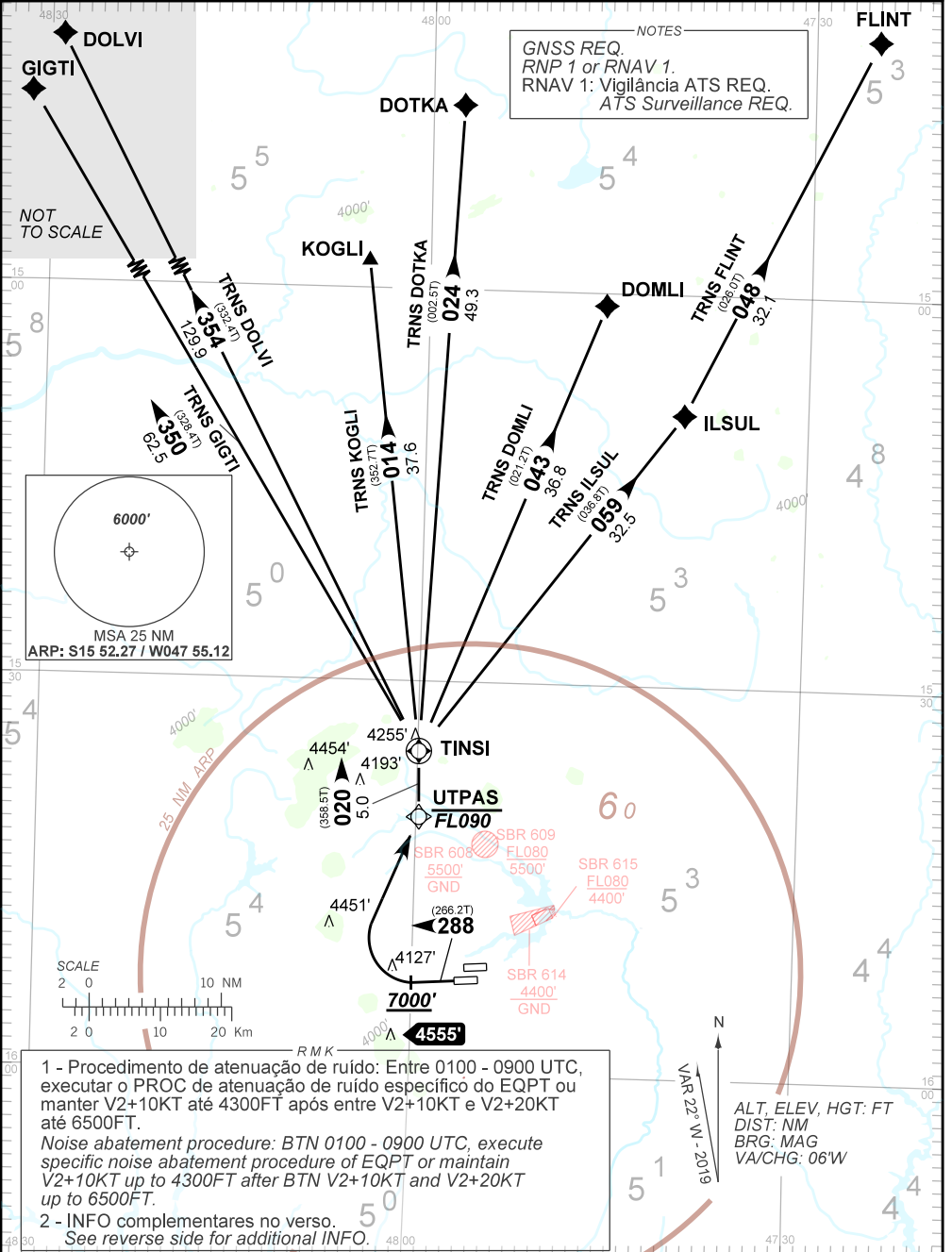
BRASÍLIA / Pres. Juscelino Kubitschek, INTL (SBBR)

RWY 29L

RNAV TINSI 1A

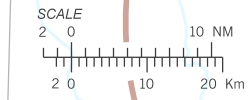
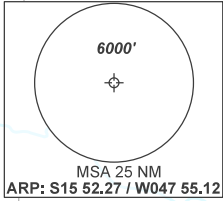
AD ELEV: 3498'

TA 7000'	TWR BRASÍLIA 118.10 118.45 118.75 121.50	APP BRASÍLIA 120.65 120.00 120.30 121.50	ACC BRASÍLIA 133.05 124.70 124.50 135.00 121.50
----------	---	--	---



NOT TO SCALE

NOTES
GNSS REQ.
RNP 1 or RNAV 1.
RNAV 1: Vigilância ATS REQ.
ATS Surveillance REQ.



1 - Procedimento de atenuação de ruído: Entre 0100 - 0900 UTC, executar o PROC de atenuação de ruído específico do EQPT ou manter V2+10KT até 4300FT após entre V2+10KT e V2+20KT até 6500FT.
Noise abatement procedure: BTN 0100 - 0900 UTC, execute specific noise abatement procedure of EQPT or maintain V2+10KT up to 4300FT after BTN V2+10KT and V2+20KT up to 6500FT.

2 - INFO complementares no verso.
See reverse side for additional INFO.

ALT, ELEV, HGT: FT
DIST: NM
BRG: MAG
VA/CHG: 06'W

CHANGES: ADEL DEC FREQ IDENT LAYOUT PROC RMK

— RMK —

3 - Obstáculos próximos não considerados para cálculo do (PDG):

Close-in obstacles not considered for procedure gradient (PDG):

Árvore / Tree: a partir de / from THR 11R, AZM262, DIST 499m, ELEV 3555'.

Árvore / Tree: a partir de / from THR 11R, AZM292, DIST 535m, ELEV 3558'.