

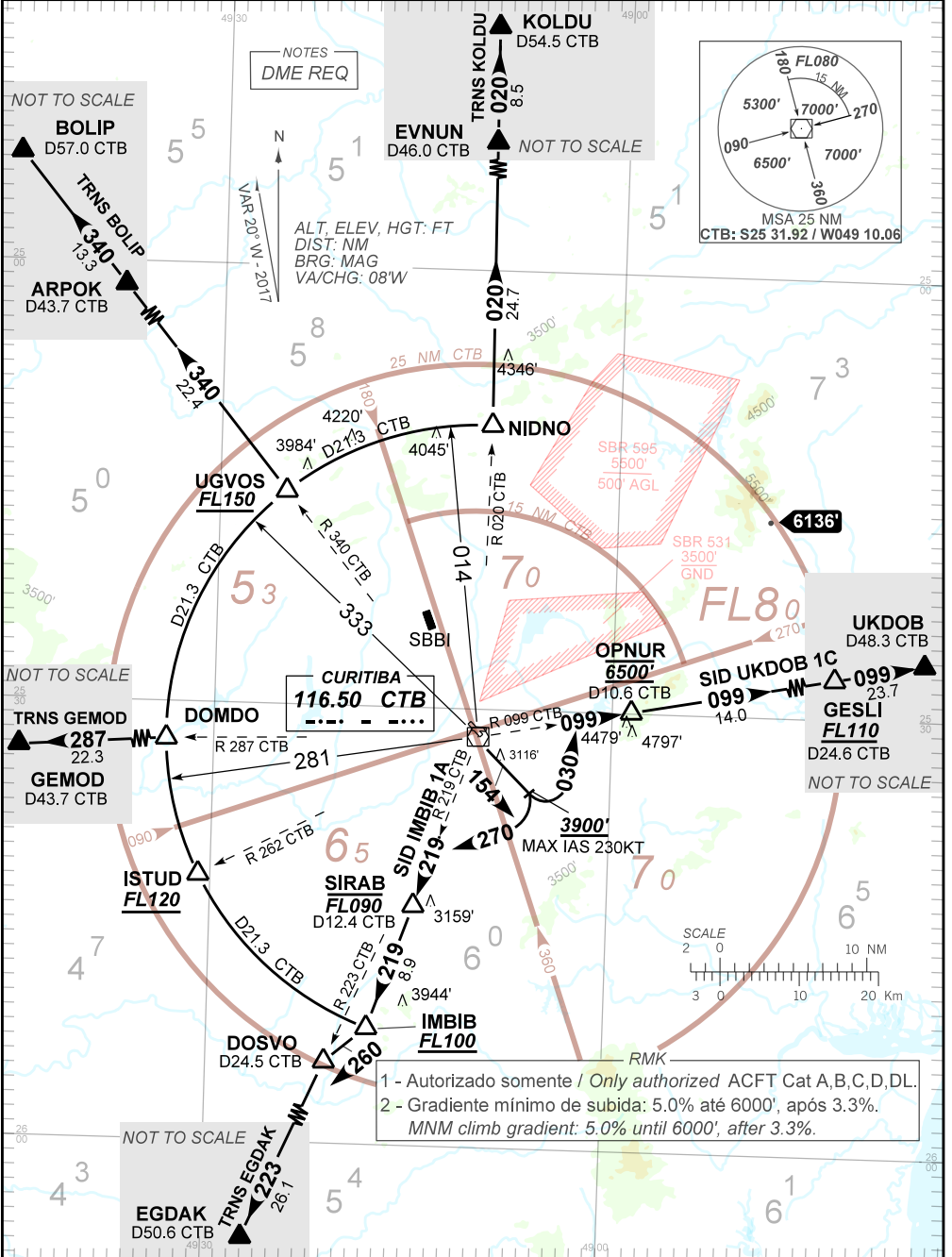
STANDARD DEPARTURE CHART  
INSTRUMENT (SID)

CURITIBA / Afonso Pena, INTL (SBCT)  
RWY 15

AD ELEV: 2989'

IMBIB 1A - UKDOB 1C

TA 7000'	TWR CURITIBA 118.15 121.50	APP CURITIBA 119.70 119.95 120.65 120.95 129.55 133.15 121.50	ACC CURITIBA 132.80 126.50 126.10 127.50 125.80 127.20 126.95 128.25 121.50
----------	-------------------------------	---	---



1 - Autorizado somente / Only authorized ACFT Cat A,B,C,D,DL.  
2 - Gradiente mínimo de subida: 5.0% até 6000', após 3.3%.  
MNM climb gradient: 5.0% until 6000', after 3.3%.

CHANGES: RMK.