

CARTA DE APROXIMAÇÃO
POR INSTRUMENTOS (IAC)
INSTRUMENT APPROACH CHART (IAC)

BRASÍLIA / Pres. Juscelino Kubitschek, INTL (SBBR)

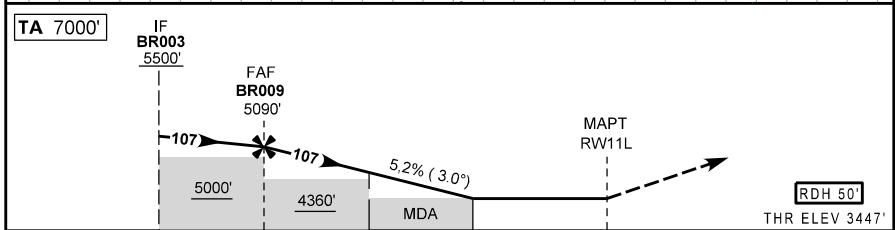
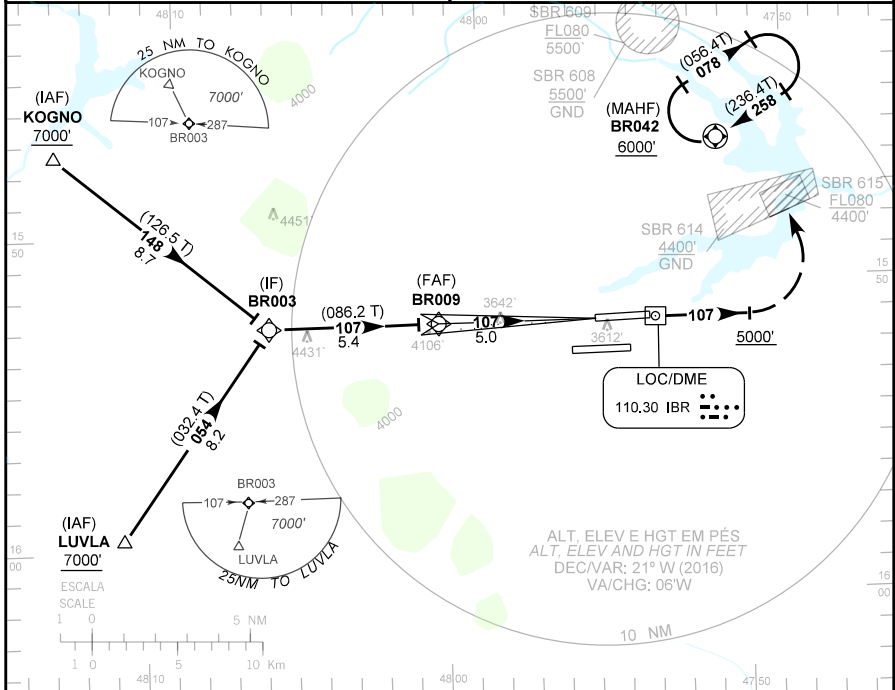
LOC Y RWY 11L

AD ELEV: 3497'	ATIS 127.80	APP BRASÍLIA 119.20 119.50 119.70 120.00 129.60 121.50	TWR BRASÍLIA 118.10 118.45 121.50	GNDC BRASÍLIA 121.80
----------------	----------------	-----------------------------------------------------------	--------------------------------------	-------------------------

RMK: 1) Observar compulsoriamente seção CAR da AIP-MAP.
RMK: 1) CAR section of AIP-MAP shall be observed.
2) RNP APCH

Aproximação Perdida: Subir para 6000' no rumo 107.
Após 5000', curvar à esquerda para espera em BR042.

Missed Approach: Climb to 6000' course 107. After 5000', turn left direct BR042 for holding.



TO THR 11L (NM)	10.4	5.0	2.8	1.2	0.0
TO IFR (DME)	12.3	6.9	4.7	3.1	1.9

BR009	4.0	3.0	2.0	1.2	RWY11L														
	5090	4771	4452	4134	3890	ALT													
	1643	1324	1005	687	443	(HGT)													

POSO DIRETO STRAIGHT-IN	CAT	A	B	C	D	E
LOC	MDA / OCH / TETO	3890 / 450 / 500				
	ALS/NO ALS/ RVR ALS (m)	800 / 1600 / NIL		1400 / 2100 / NIL		
CIRCULAR TO CIRCLE	MDA / OCH / TETO	NA				
	VIS (m)					

MODIFICAÇÕES / CHANGES: PERFL / PROFILE DEC.