

**INSTRUMENT APPROACH
CHART (IAC)**

GOVERNADOR VALADARES / Cel. Altino Machado (SBGV)

AD ELEV: 563'

RNAV(GNSS) Z RWY 07

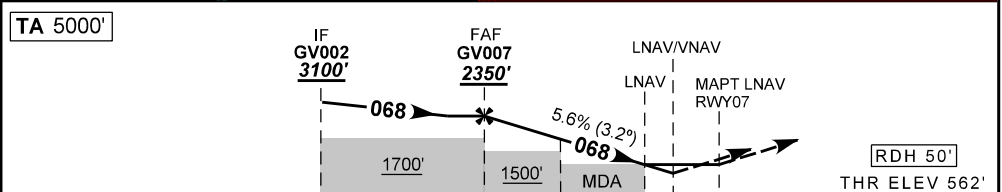
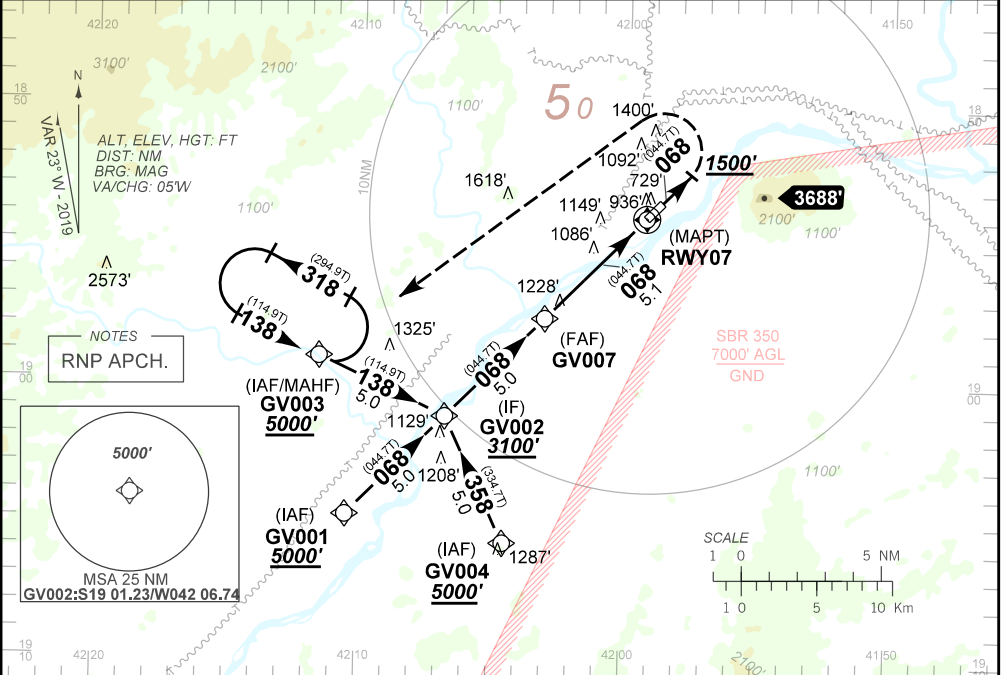
| | | | | |
|--------------------|--------------------------|---------------------------------|--|--|
| ATIS NIL | APP NIL | AFIS VALADARES 132.05 | | GNDC NIL |
| N/A | FINAL CRS 068° | FAF 2350' | LNAV/VNAV DA / (OCH): 1232' / (670') | LNAV MDA / (OCH): 1330' / (770') |

APCH Perdida: Subir para **5000'**. Após **1500'**, curvar à ESQUERDA direto GV003 para espera.

Missed APCH: Climb to **5000'**. After **1500'**, turn LEFT direct to GV003 for holding.

RMK: 1) Para sistemas não compensados Baro-VNAV, LNAV/VNAV NAO AUTORIZADO abaixo de 0°C ou acima de 40°C; 2) Aproximação para circular não autorizada pelo setor LESTE, devido a relevo.

1) For uncompensated systems Baro-VNAV, LNAV/VNAV NOT AUTHORIZED below 0°C or above 40°C; 2) Circling Approach is not authorized by EAST sector of the aerodrome due to relief.



TO THR 07 (NM) 10.1 5.1 3.1 2.1 1.8 0.0

| | | | | | | | | | | | | |
|--|-------|------|------|------|-------|-------|-----|-----|-----|-----|-----|-----|
| | GV007 | 4.0 | 3.1 | 2.1 | RWY07 | KT | 090 | 110 | 130 | 150 | 170 | 190 |
| | | 2350 | 1971 | 1665 | 1330 | FPM | 500 | 600 | 700 | NA | NA | NA |
| | | 1788 | 1409 | 1103 | 768 | (HGT) | | | | NA | | |

| | | | | | | |
|-------------|-------------------------|------------------|---|------------------|----|----|
| STRAIGHT-IN | CAT | A | B | C | D | E |
| | DA / (OCH) | 1232' / (670') | | | | |
| LNAV/VNAV | ALS/NO ALS/ RVR ALS (m) | NIL / 1600 / NIL | | | | |
| | MDA / (OCH) | 1330' / (770') | | | NA | |
| LNAV | ALS/NO ALS/ RVR ALS (m) | NIL / 1600 / NIL | | | | |
| | MDA / (OCH) | 1490' / (930') | | 1700' / (1140') | | |
| CIRCLING | MDA / (OCH) | 1490' / (930') | | 1700' / (1140') | | |
| | VIS (m) | NIL / 2000 / NIL | | NIL / 2400 / NIL | | NA |

CHANGES: NEW CHART.