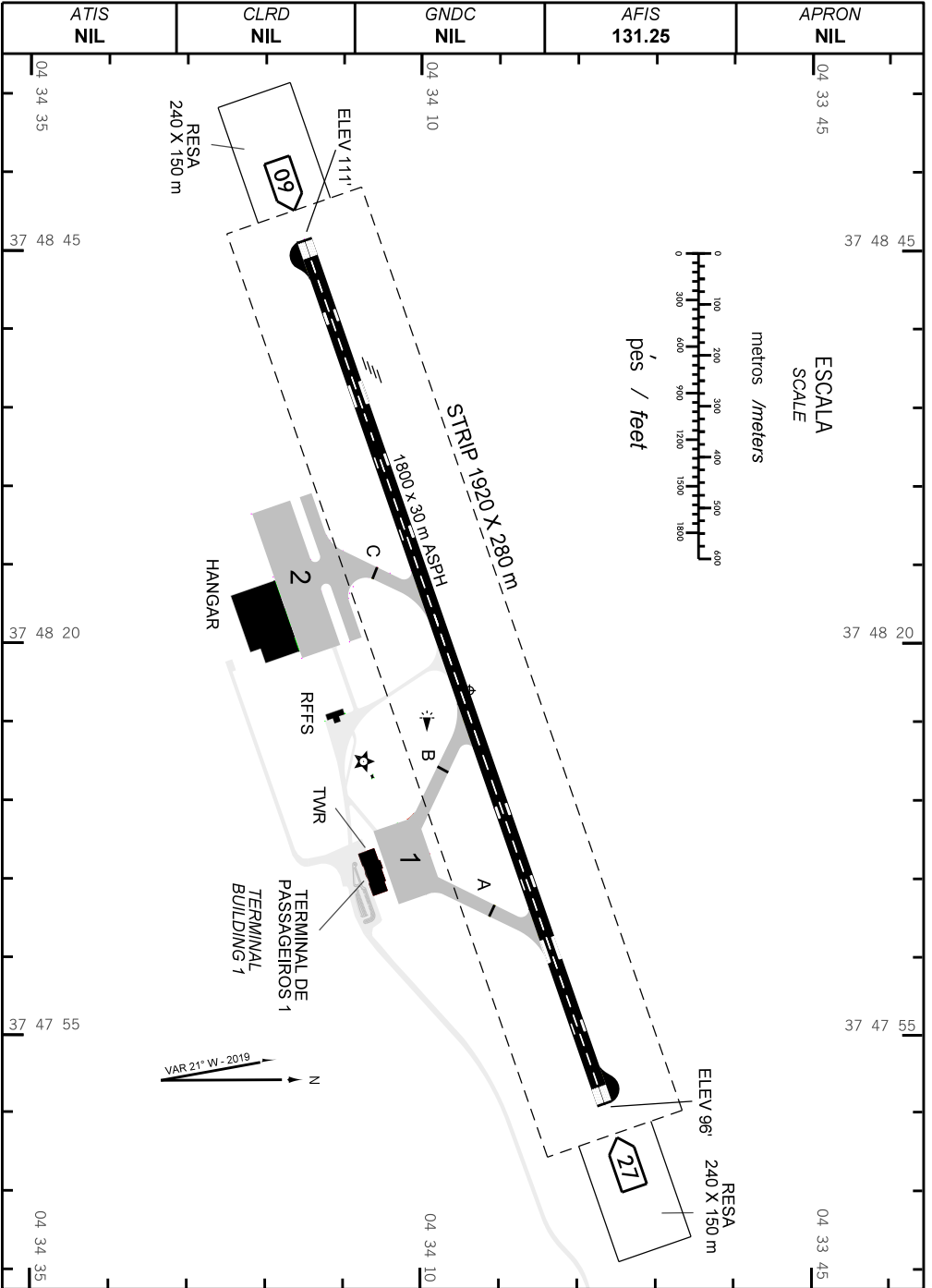


AD ELEV: 118'

ARP S04 34 07/ W037 48 17



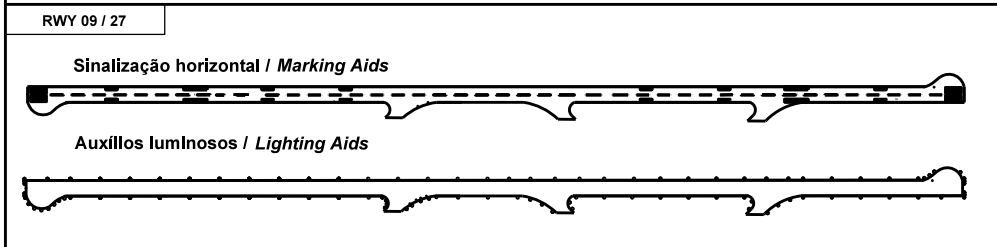
CHANGES: NEW CHART

ADC - SBAC: INFORMAÇÕES COMPLEMENTARES / COMPLEMENTARY INFORMATION

| CARACTERÍSTICAS FÍSICAS / PHYSICAL CHARACTERISTICS | | | | | | | | | | | | |
|--|---------|--------------|-----|-------------------------------|-----|-----|------------------|-----------|------------|------------------------------------|-----|--|
| PISTA RUNWAY | | | | DIMENSÕES(m) DIMENSIONS(m) | | | | | PCN | TIPO DE SUPERFÍCIE SURFACE KIND | | |
| RWY | BRG MAG | Tipo Type | RCD | RWY | SWY | CWY | STRIP | RESA | RWY | RWY | SWY | |
| a | b | c | d | e | f | g | h | i | j | k | l | |
| 09 | 089 | NPA | 3C | 1800 X 30 | | | 1920 x 280 | 240 X 150 | 36/F/A/X/U | ASPH | | |
| 27 | 269 | NPA | 3C | | | | | 240 X 150 | | | | |

| DISTÂNCIAS DECLARADAS, AUXÍLIOS VISUAIS E COORDENADAS DAS CABECEIRAS DECLARED DISTANCES, VISUAL AIDS AND THRESHOLD COORDINATES | | | | | | | |
|---|---------|---------|---------|--------|-----------------|--------------------------------------|----------------------------|
| RWY | TORA(m) | TODA(m) | ASDA(m) | LDA(m) | AUXÍLIOS / AIDS | ALTURA GEOIDAL(m) GEOID HEIGHT(m) | COORDENADAS COORDINATES |
| 09 | 1800 | 1800 | 1800 | 1800 | PAPI | -7,89 | S04 34 18 W037 48 46 |
| 27 | 1800 | 1800 | 1800 | 1800 | | -7,89 | S04 33 59 W037 47 51 |

SERVIÇO DE SALVAMENTO E CONTRAINCÊNDIO / RESCUE AND FIRE FIGHTING SERVICE: RFFS REQ - 5



RMK:

MEHT: 42FT.

CHANGES: NEW CHART