

**INSTRUMENT APPROACH  
CHART (IAC)**

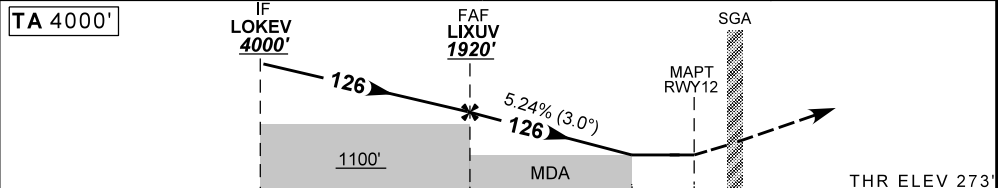
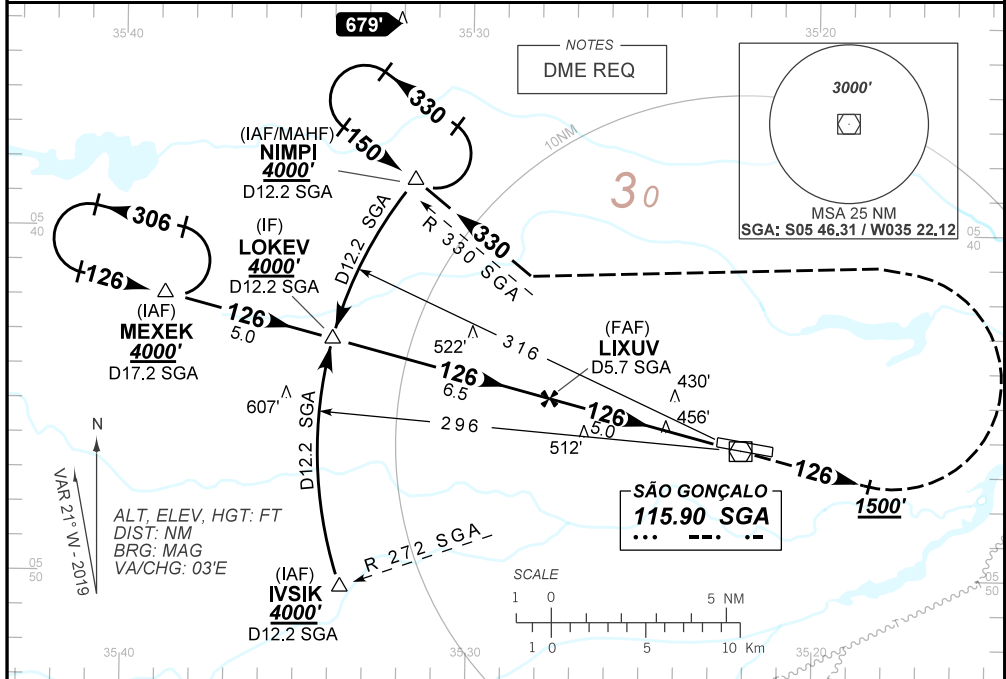
**SÃO GONÇALO DO AMARANTE / Gov. Aluizio Alves, INTL (SBSG)**

**AD ELEV: 273'**

**VOR RWY 12**

D-ATIS <b>127.60</b>	APP NATAL <b>119.30 119.65 121.50</b>	TWR SÃO GONÇALO <b>118.20 118.85</b>	GNDCC SÃO GONÇALO <b>121.70</b>
VOR SGA <b>115.90 MHz</b>	FINAL CRS <b>126°</b>	FAF: <b>1920'</b>	VOR MDA / (OCH): <b>760' / (490')</b>

APCH Perdida: 1) Subir para **4000'**. Manter rumo **126** até cruzar **1500'**. Após, curvar à ESQUERDA, RDL **330** SGA até NIMPI para espera. 2) IAS MÁX 230 Kt.  
Missed APCH: 1) Climb to **4000'**. Maintain course **126** until passing **1500'**. Then, turn LEFT, **330** SGA RDL for holding at NIMPI. 2) MAX IAS 230 Kt.



TO THR 12 (NM)	11.5	5.0	1.4	0.0
TO SGA (DME)	12.2	5.7	2.1	0.7

	LIXUV	4.0	3.0	2.0	1.4	RWY12	KT	90	110	130	150	170	190	
		1920	1600	1280	960	760	FPM	500	600	700	800	900	1000	
		1648	1328	1008	688	488	(HGT)	FAF-MAPT	3:21	2:44	2:19	2:01	1:46	1:35

STRAIGHT-IN	CAT	A	B	C	D	E
	MDA / (OCH)	760' / (490')				
VOR	ALS/SINO ALS/ RVR ALS (m)	NIL / 1600 / NIL			NIL / 2300 / NIL	
CIRCLING	MDA / (OCH)	NA				
	VIS (m)					

CHANGES: LAYOUT, DEC. MA, RDL, ADEL, PROC.