

INSTRUMENT APPROACH CHART (IAC)

PORTO ALEGRE / Salgado Filho, INTL (SBPA)

AD ELEV: 12'

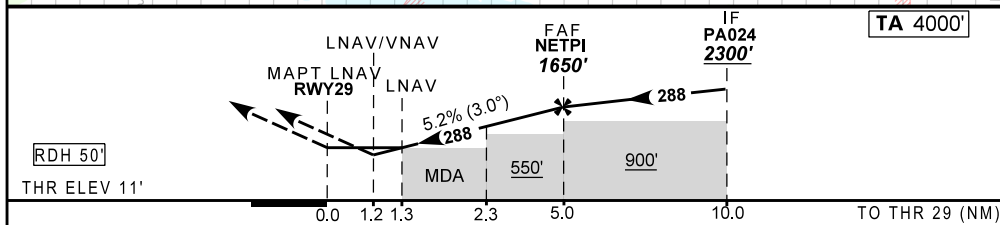
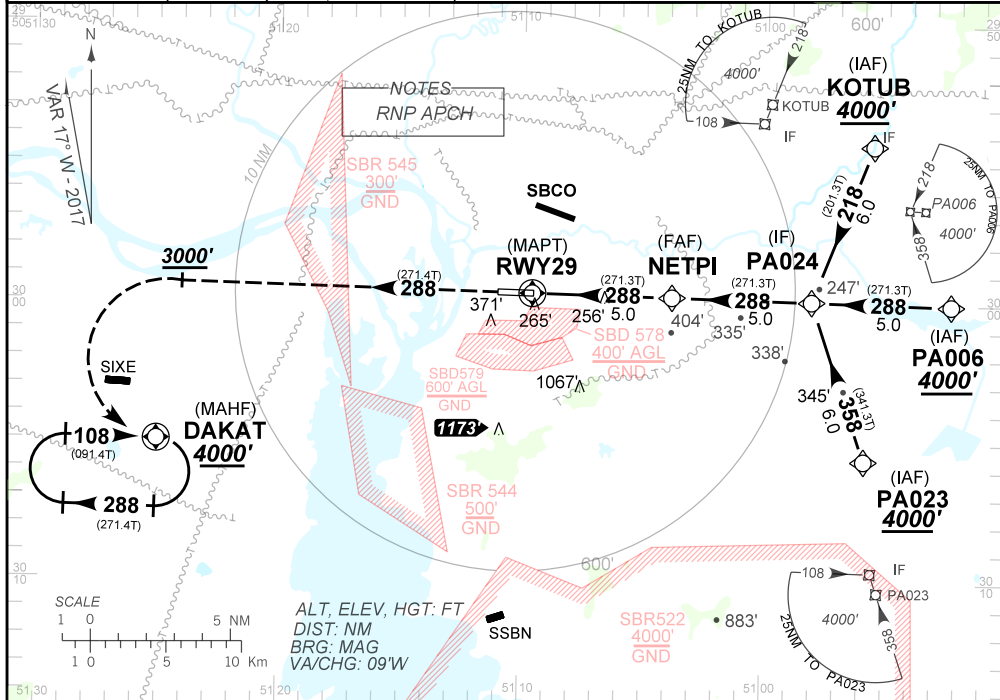
RNAV (GNSS) RWY 29

D-ATIS 132.35	APP PORTO ALEGRE 119.00 120.10 120.55 128.90 121.50	TWR PORTO ALEGRE 118.10 121.50	GNDC PORTO ALEGRE 121.90
-------------------------	---	--	------------------------------------

N/A	FINAL CRS 288°	FAF 1650'	LNAV/VNAV DA / (OCH) 435' (430')	LNAV MDA / (OCH) 490' (480')
-----	--------------------------	---------------------	--	--

APCH Perdida: Subir para **4000'** no rumo **288** Após **3000'**, curvar a ESQUERDA direto DAKAT para espera. IAS MAX 230KT.
 Missed APCH: Climb to **4000'** on course **288**. After **3000'**, turn LEFT direct to DAKAT for holding. MAX IAS 230 KT.

RMK: Para sistemas BARO-VNAV não compensados, procedimento LNAV/VNAV não autorizado abaixo de -10°C.
 RMK: For uncompensated systems, LNAV/VNAV procedure not authorized below -10°C.



RWY29	1.3	2.3	3.0	4.0	NETPI	KT	090	110	130	150	170	190
ALT	470	794	1016	1334	1650	FPM	500	600	700	800	900	1000
(HGT)	459	783	1005	1323	1639	FAF-MAPT	NA					

STRAIGHT-IN	CAT	A	B	C	D	E
LNAV/VNAV	DA / (OCH) / TETO	435' / (430') / 500'				NA
	ALS/NO ALS/ RVR ALS (m)	NIL / 2000 / NIL				
LNAV	MDA / (OCH) / TETO	490' / (480') / 500'				
	ALS/NO ALS/RVR ALS (m)	NIL / 2000 / NIL		NIL / 2200 / NIL		
CIRCLING	MDA / OCH / TETO	NA				
	VIS (m)					