

**INSTRUMENT APPROACH
CHART (IAC)**

PORTO ALEGRE / Salgado Filho, INTL (SBPA)

AD ELEV: 12'

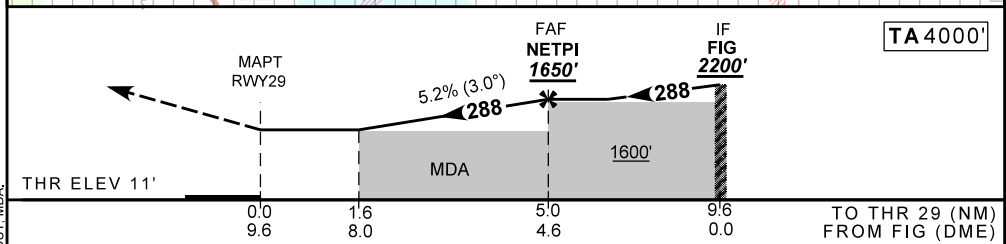
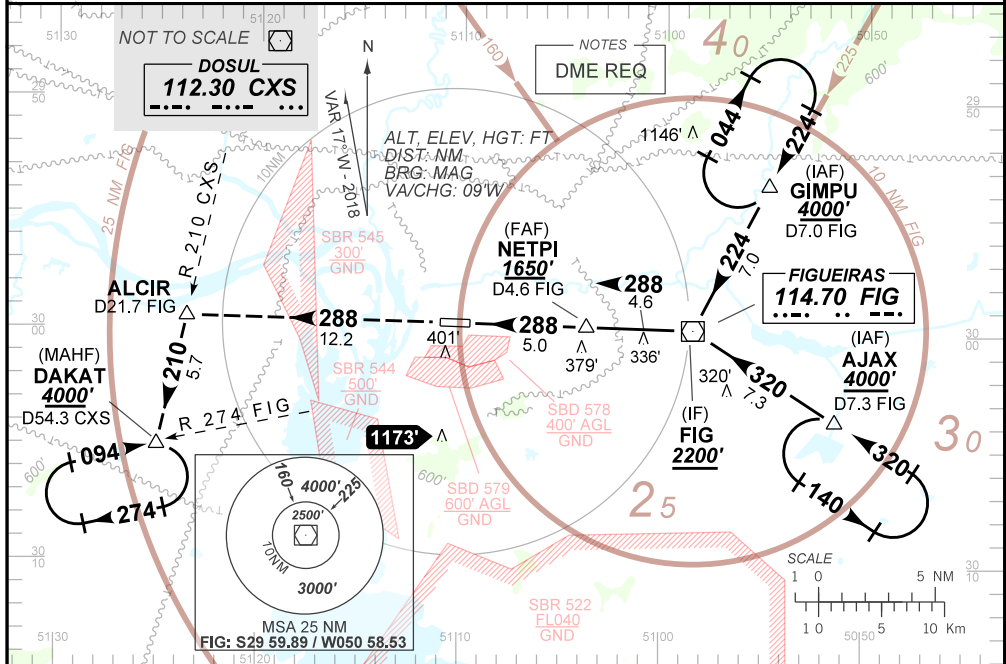
VOR Y RWY 29

D-ATIS 132.35	APP PORTO ALEGRE 119.00 120.10 120.55 128.90 121.50				TWR PORTO ALEGRE 118.10 121.50	GND PORTO ALEGRE 121.90
VOR FIG 114.70 MHz	FINAL CRS 288°	FAF: 1650'	N/A	VOR MDA / (OCH): 560' (550')		

APCH Perdida: Subir para **4000'**, manter RDL **288** FIG até ALCIR. Após, curvar à ESQUERDA, RDL **210** CXS para espera em DAKAT.

Missed APCH: Climb to **4000'**, maintain **288** FIG RDL until ALCIR. After, turn LEFT, **210** CXS RDL for holding at DAKAT.

RMK: NIL.



RWY29	1.6	2.0	3.0	4.0	NETPI	KT	090	110	130	150	170	190
ALT	560	698	1016	1334	1650	FPM	500	600	700	800	900	1000
(HGT)	549	687	1005	1323	1639	FAF-MAPT	NA					

STRAIGHT-IN	CAT	A	B	C	D	E
	MDA / (OCH)	560' / (550')				
VOR	ALS/NO ALS/ RVR ALS (m)	NIL / 1600 / NIL		NIL / 2500 / NIL		
	MDA / (OCH)	NA				
CIRCLING	MDA / (OCH)	NA				
	VIS (m)	NA				

CHANGESIDENT. PROC. DEC. MSA. LAYOUT. MDA.