

INSTRUMENT APPROACH CHART (IAC)

TERESINA / Senador Petrônio Portella (SBTE)

RNAV(GNSS) RWY 02

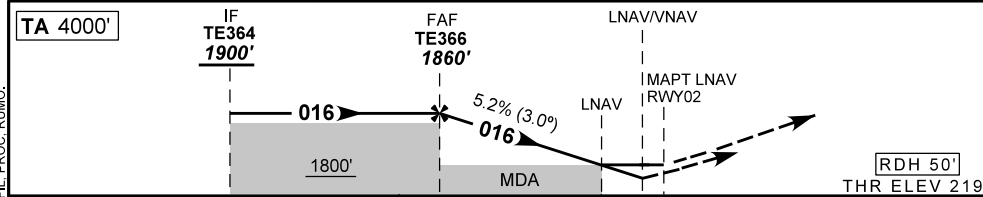
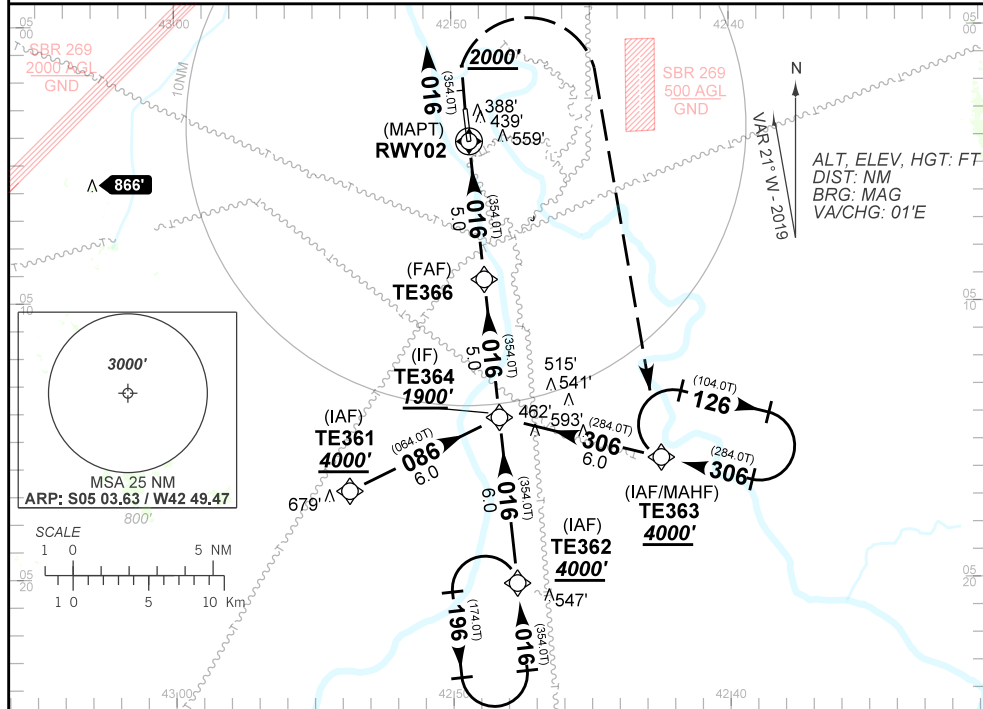
AD ELEV: 220'

ATIS 127.80	APP TERESINA 119.60		TWR TERESINA 118.80		GND NIL
N/A	FINAL CRS 016°	FAF 1860'	LNAV/VNAV DA / (OCH): 600' / (381')		LNAV MDA / (OCH): 720' (500')

APCH Perdida: Subir para **3300'**. Após **2000'**, curvar à DIREITA direto TE363 para espera.

Missed APCH: Climb to **3300'**. After **2000'**, turn RIGHT direct to TE363 for holding.

RMK:1) Para sistemas não compensados Baro-VNAV, LNAV/VNAV não autorizado abaixo de 0°C ou acima de 48°C.
1) For uncompensated systems Baro-VNAV, LNAV/VNAV NOT AUTHORIZED below 0°C or above 48°C.



TO THR 02 (NM)	10.0	5.0	1.4	1.0	0.0	KT	090	110	130	150	170	190
TE366	4.0	3.0	2.0	1.4	RWY02	FPM	500	600	700	800	900	NA
	1860	1545	1225	910	720	ALT						
	1640	1325	1005	690	500	(HGT)	FAF-MAPT					

STRAIGHT-IN	CAT	A	B	C	D	E
LNAV/VNAV	DA / OCH	600' / (381')				NA
	ALS/NO ALS/ RVR ALS (m)	NIL / 1800 / NIL				
LNAV	MDA / OCH	720' / (500')				
	ALS/NO ALS/RVR ALS (m)	NIL / 1600 / NIL		NIL / 2300 / NIL		
CIRCLING	MDA / OCH / TETO	NA				
	VIS (m)					

CHANGES: LAYOUT, MINM OPR, OBST, PERFL, PROC, RUMMO.