

CARTA DE APROXIMAÇÃO
POR INSTRUMENTOS (IAC)
INSTRUMENT APPROACH CHART (IAC)

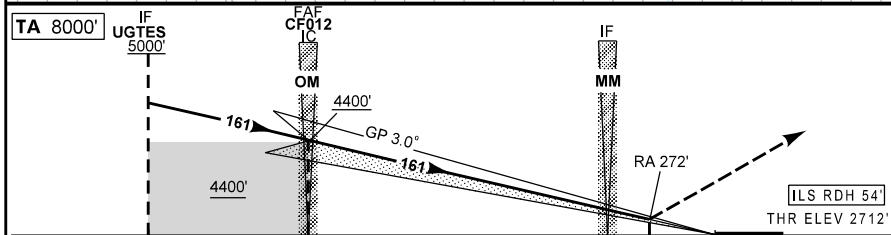
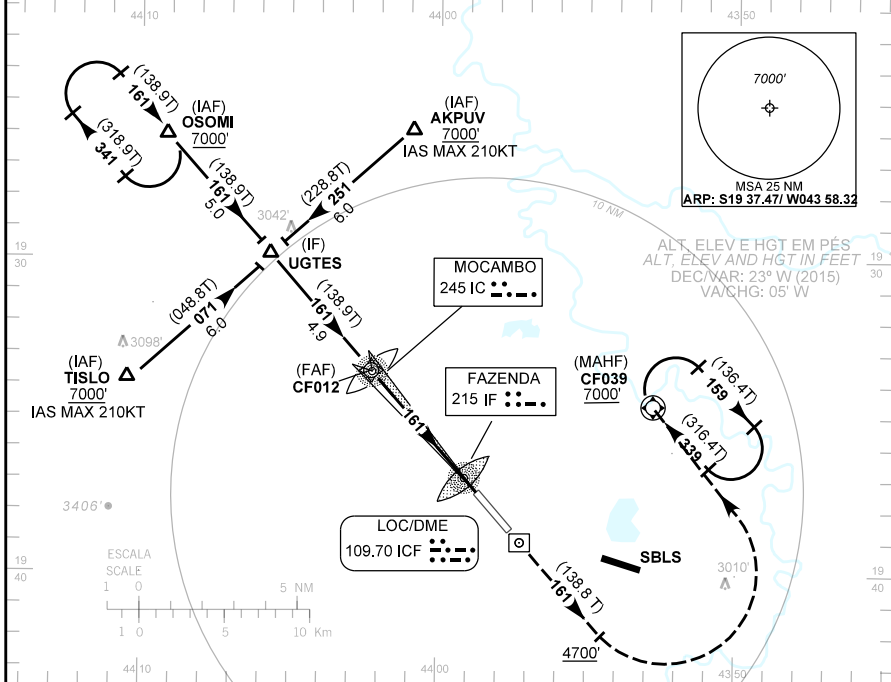
BELO HORIZONTE / Tancredo Neves, INTL (SBCF)

ILS T RWY 16

AD ELEV: 2713'	ATIS 127.85	APP BELO HORIZONTE 119,10 119,30 119,65 120,20 128,55 129,10 129,40 121,50	TWR CONFINES 118,20 121,50	GNDQ CONFINES 121,90
----------------	----------------	---	-------------------------------	-------------------------

RMK: 1) ILS CAT I Autorização Requerida - ILS CAT I AR (mínimos reduzidos para pouso): Requer aprovação específica de OpSpec ou LOA e o uso do HUD até a DH/DA. 2) IAS MAX na espera: 210 KT. 3) RNP APCH
 RMK: 1) ILS CAT I Authorization Required - ILS CAT I AR (minima lowered for landing): Requires specific OpSpec or LOA Approval and use of HUD to DH/DA. 2) IAS MAX in holding 210 KT. 3) RNP APCH

Aproximação Perdida: Subir para 7000'. Manter o rumo 161 até 4700'. Curvar à esquerda para espera em CF039.
 Missed Approach: Climb to 7000'. Maintain course 161 until 4700'. Turn left for holding at CF039.



TO THR 16 (NM)	10.0	5.1	0.6	0.3	0.0
TO ICF (DME)	12.1	7.2	2.7	2.4	2.1

IC	4.0	3.0	2.0	1.0	0.3	RWY 16	KT	090	110	130	150	170	190
4400	4040	3722	3403	3085	2862	ALT	FPM	500	600	700	800	900	NA
1688	1328	1010	691	373	150	(HGT)	FAP-MAPT	NIL					

POUSO DIRETO STRAIGHT-IN	CAT	A	B	C	D	E
	RA / DA / OCH / TETO	272 / 2862 / 150 / 150				
CAT I AR	RVR (m)	450				
CIRCULAR TO CIRCLE	MDA / OCH / TETO	NA				
	VIS (m)					

REQUERIDA APROVAÇÃO ESPECIAL DO OPERADOR E DA AERONAVE
 AIRCRAFT CERTIFICATION AND SPECIAL APPROVAL FROM THE OPERATOR REQUIRED

MODIFICAÇÕES / CHANGES: RMK