

**INSTRUMENT APPROACH
CHART (IAC)**

ARACAJU / Santa Maria, INTL (SBAR)

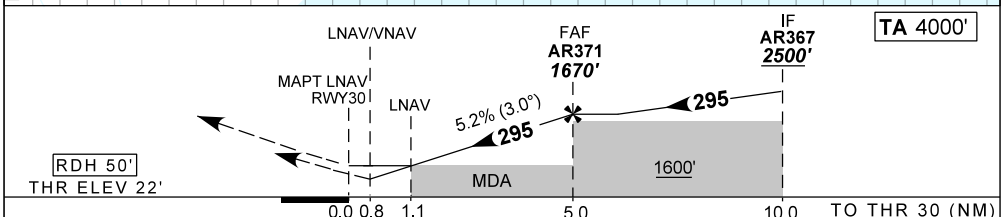
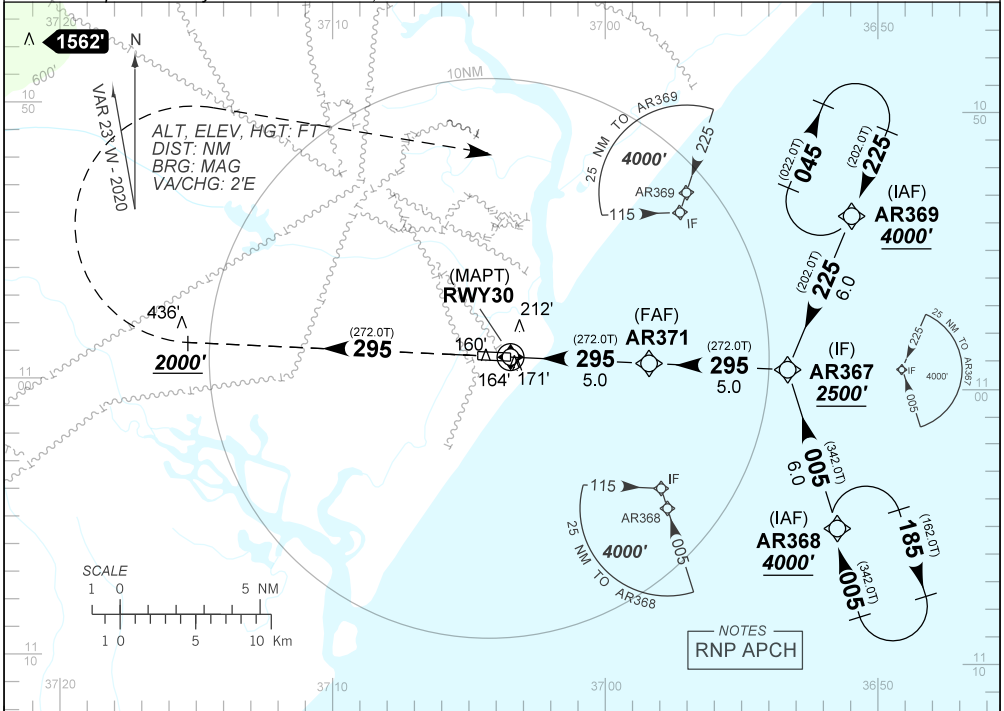
AD ELEV: 23'

RNAV(GNSS) Y RWY 30

ATIS NIL	APP ARACAJU 120.30 129.25 121.50		TWR ARACAJU 118.80		GNDC NIL
N/A	FINAL CRS 295°	FAF 1670'	LNAV/VNAV DA / (OCH): 332' / (310')		LNAV MDA / (OCH): 420' / (400')

APCH Perdida: Subir para **4000'**. Manter rumo **295** até cruzar **2000'**. Após, curvar à DIREITA para espera em AR369.
Missed APCH: Climb to **4000'**. Maintain course **295** until passing **2000'**. Then, turn RIGHT for holding at AR369.

RMK: Para sistemas não compensados Baro-VNAV, LNAV/VNAV NÃO AUTORIZADO abaixo de 10°C ou acima de 48°C.
For uncompensated systems Baro-VNAV, LNAV/VNAV NOT AUTHORIZED below 10°C or above 48°C.



RWY30	1.1	2.0	3.0	4.0	AR371		KT	090	110	130	150	170	190
ALT	420	710	1028	1347	1670		FPM	500	600	700	800	900	NA
(HGT)	400	687	1005	1324	1647		FAF-MAPT	NA					

STRAIGHT-IN	CAT	A	B	C	D	E	
	DA / (OCH)	332' / (310')					NA
	ALS/NO ALS/ RVR ALS (m)	NIL / 1400 / NIL					
	MDA / (OCH)	420' / (400')					
LNAV	ALS/NO ALS/RVR ALS (m)	NIL / 1600 / NIL			NIL / 1800 / NIL		
	MDA / (OCH)	NA					
CIRCLING	VIS (m)	NA					

CHANGES: LAYOUT, MIN. OPER. PROC.

AIRAC AMDT 2008A1 16 JUL 20

DEPARTAMENTO DE CONTROLE DO ESPAÇO AÉREO

SBAR_IAC_00H 1/1

IAC RNAV(GNSS) Y RWY 30