

STANDARD ARRIVAL CHART
INSTRUMENT (STAR)

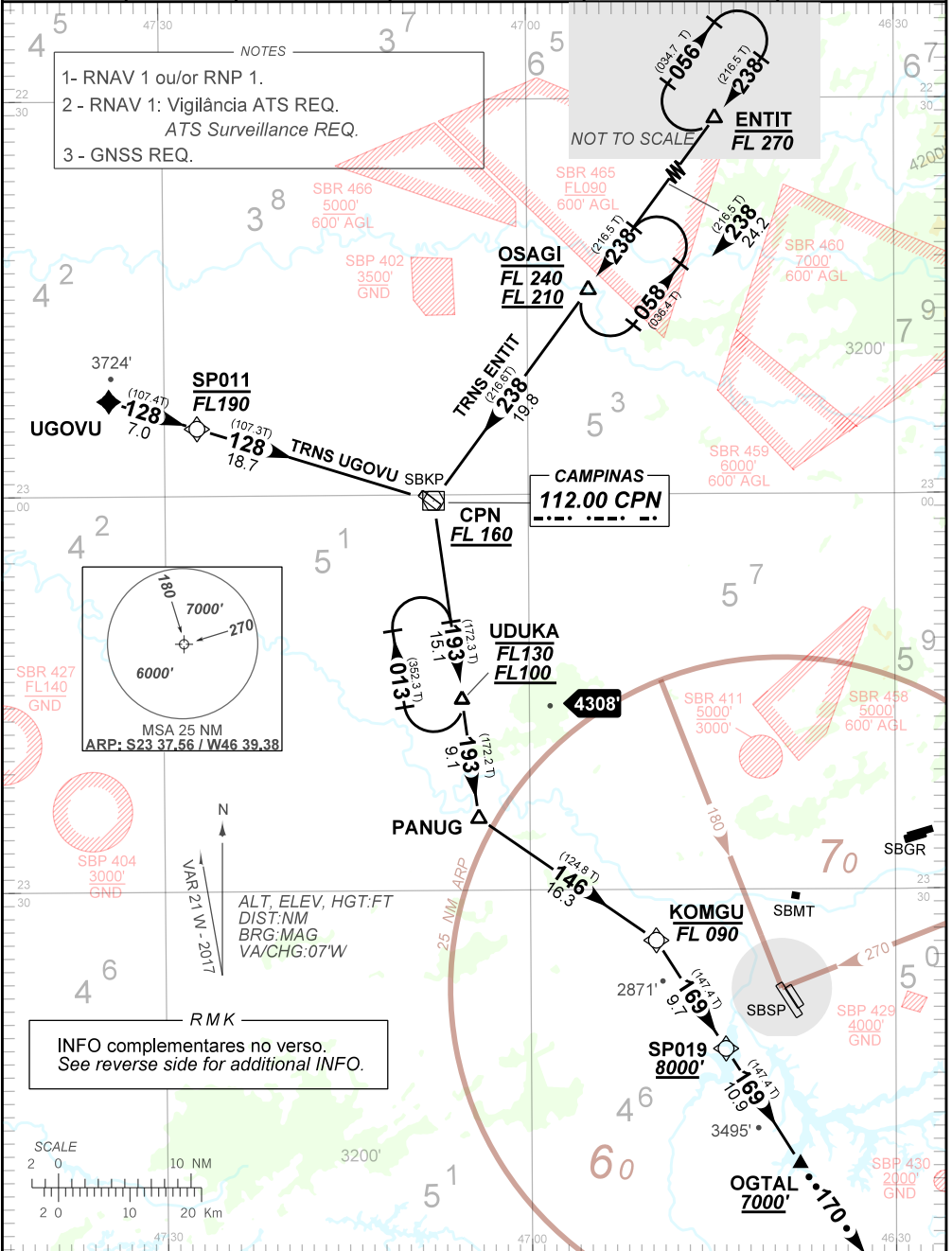
SÃO PAULO / Congonhas (SBSP)

RWY 35L/35R

RNAV CPN 2B

AD ELEV: 2631'

TA 8000'	D-ATIS 127.65	ACC CURITIBA 125.075 132.10 126.95 121.50	ACC BRASÍLIA 123.35 134.00 126.80 128.50 126.15 121.50	APP SÃO PAULO 119.80 129.00 135.75 119.25 132.10 121.50	TWR CONGONHAS 118.05 127.15 121.50
----------	------------------	---	--	---	--



CHANGES: NEW CHART.

FALHA DE COMUNICAÇÃO

COMMUNICATION FAILURE

CHEGADA CPN 2B / CPN 2B ARRIVAL

Acionar transponder A7600, então completar chegada até OGTAL e executar o procedimento autorizado pelo ATC. Ou, se durante vetorização na HDG 170, manter proa 170, altitude MNM 7000' até 15NM de OGTAL, então curvar à esquerda e completar o procedimento IAC.

Squawk code A7600, then complete arrival up to OGTAL and execute procedure authorized by ATC. Or, if under vectoring on HDG 170, maintain heading 170, MNM altitude 7000', up to 15NM from OGTAL, then turn left and complete the IAC procedure.